

# PRINEVILLE RETAIL SPACE @ OCHOCO PLAZA



FOR LEASE > PRINEVILLE, OR



## LOCATION

1575 NE 3rd St, Prineville OR 97754

## AVAILABLE SPACE

- 10,835 SF

## RENTAL RATE

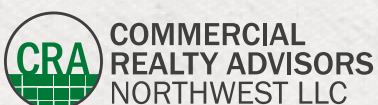
Please call for details

## TRAFFIC COUNTS

NE 3rd St - 11,406 ADT ('24)

## HIGHLIGHTS

- Cotenants include CVS, Ray's Food Place, Ace Hardware, Verizon, Arby's, Prineville DMV and more!



**Jeff Olson** 503.957.1452 | jeff@cra-nw.com  
**Kelli Maks** 503.680.3765 | kelli@cra-nw.com

**503.274.0211**  
[www.cra-nw.com](http://www.cra-nw.com)

**OCHOCO PLAZA**  
**1575 NE 3RD ST**  
PRINEVILLE, OR

**PHOTOS**



**OCHOCO PLAZA**  
**1575 NE 3RD ST**  
**PRINEVILLE, OR**

**PHOTOS**



**OCHOCO PLAZA**  
**1575 NE 3RD ST**  
PRINEVILLE, OR



**OCHOCO PLAZA**  
**1575 NE 3RD ST**  
PRINEVILLE, OR

NE Laughlin Road

**AVAILABLE**  
**10,835 SF**

ORDEPT  
HUMAN  
SERVICES

**ACE**  
Hardware

**Roy's**  
FOOD PLACE  
EMPLOYEE OWNED • COMMUNITY VALUES

**CVS**  
pharmacy

PRINEVILLE  
DMV

Ochoco Plaza Drive

NE Combs Flat Road

**BW** Best Western

**The Apple**  
Peddler  
RESTAURANTS

**OCHOCO PLAZA**  
SHOPPING MALL

**Arby's**

**verizon**

**TacoTime**

**COUNTRY**  
IN & OUT  
BURGER

**76**

NE 3rd Street **11,406 ADT (24)**

**11,406 ADT (24)**

**WALDORF**  
GREEN

**SunRise**  
RESTAURANT

**DOLLAR TREE**

**WaFd**  
Bank

**Starbucks**

**T-Mobile**

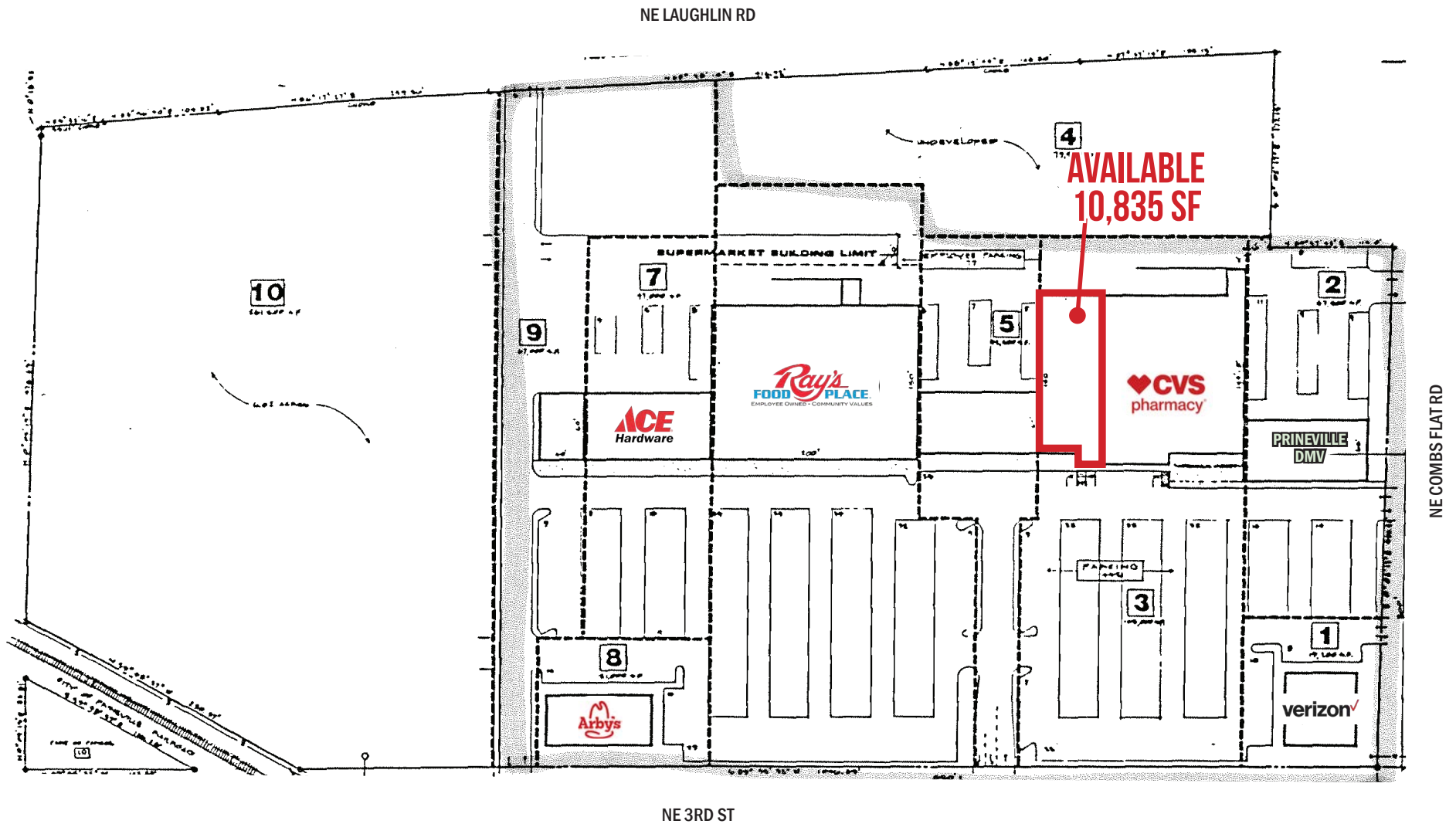
**CRA**



Google

# OCHOCO PLAZA 1575 NE 3RD ST PRINEVILLE, OR

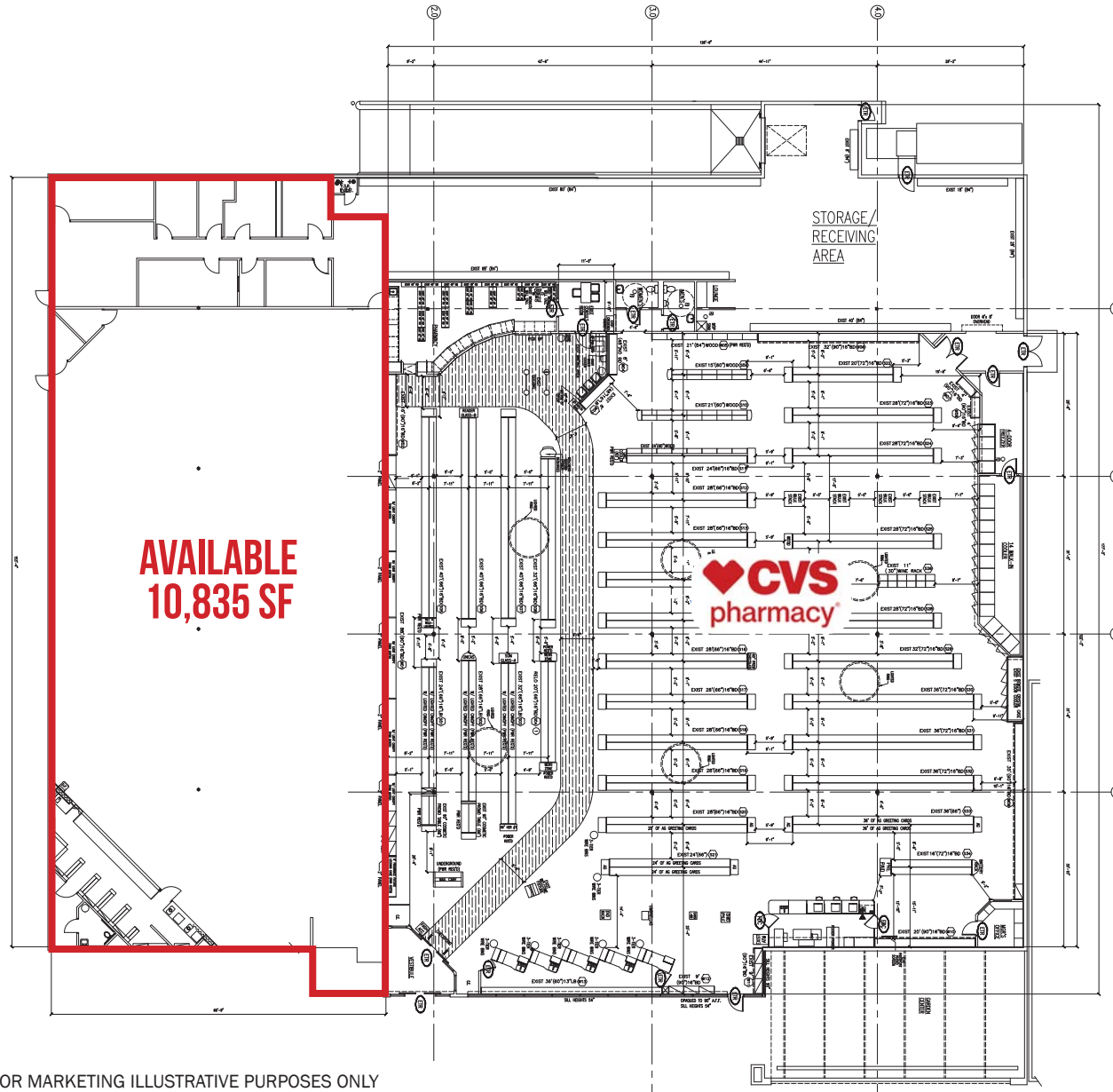
## SITE PLAN



SITE PLAN FOR MARKETING ILLUSTRATIVE PURPOSES ONLY

# FIXTURE PLAN

OCHOCO PLAZA  
1575 NE 3RD ST  
PRINEVILLE, OR



SITE PLAN FOR MARKETING ILLUSTRATIVE PURPOSES ONLY

# OCHOCO PLAZA

## 1575 NE 3RD ST

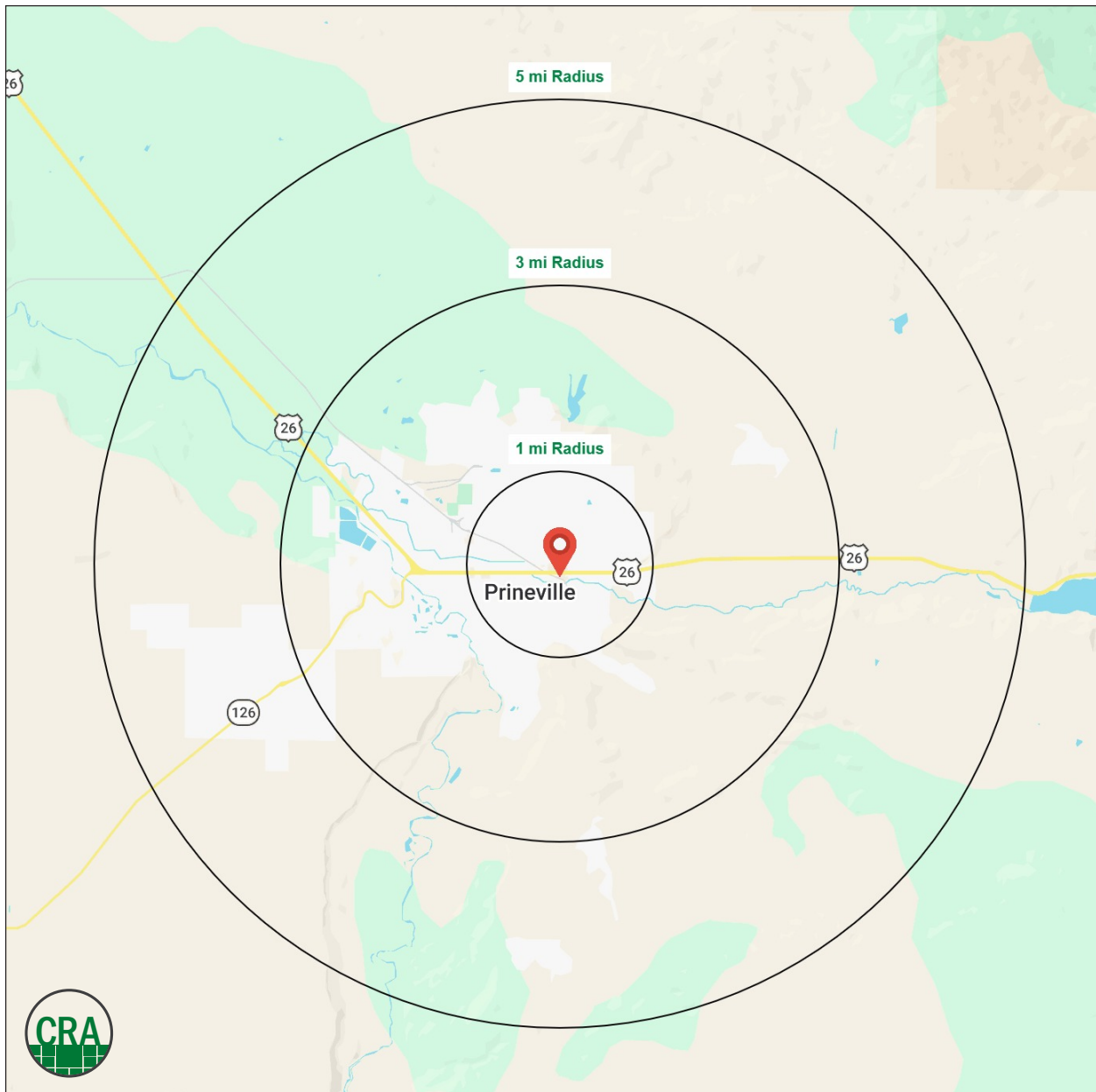
PRINEVILLE, OR

### DEMOGRAPHIC SUMMARY

Source: Regis - SitesUSA (2026)	1 MILE	3 MILE	5 MILE
Estimated Population 2025	6,464	14,841	17,352
Estimated Households	2,554	5,973	7,014
Average HH Income	\$92,266	\$92,912	\$95,820
Median Home Value	\$414,347	\$403,642	\$408,551
Daytime Demographics 16+	4,906	10,063	11,620

**\$95,820**  
Average HH Income  
5 MILE RADIUS

**40.7**  
Median Age  
1 MILE RADIUS



# Summary Profile

2010-2020 Census, 2025 Estimates with 2030 Projections  
 Calculated using Weighted Block Centroid from Block Groups



Lat/Lon: 44.304/-120.828

<b>1575 NE 3rd St Prineville, OR 97754</b>	<b>1 mi radius</b>	<b>3 mi radius</b>	<b>5 mi radius</b>
<b>Population</b>			
2025 Estimated Population	6,464	14,841	17,352
2030 Projected Population	6,895	15,775	18,422
2020 Census Population	5,578	13,596	15,951
2010 Census Population	4,801	11,901	13,973
Projected Annual Growth 2025 to 2030	1.3%	1.3%	1.2%
Historical Annual Growth 2010 to 2025	2.3%	1.6%	1.6%
2025 Median Age	40.7	40.5	41.9
<b>Households</b>			
2025 Estimated Households	2,554	5,973	7,014
2030 Projected Households	2,690	6,282	7,375
2020 Census Households	2,228	5,420	6,372
2010 Census Households	1,888	4,753	5,611
Projected Annual Growth 2025 to 2030	1.1%	1.0%	1.0%
Historical Annual Growth 2010 to 2025	2.4%	1.7%	1.7%
<b>Race and Ethnicity</b>			
2025 Estimated White	88.1%	88.0%	88.2%
2025 Estimated Black or African American	0.6%	0.5%	0.4%
2025 Estimated Asian or Pacific Islander	1.1%	0.9%	0.9%
2025 Estimated American Indian or Native Alaskan	0.9%	0.9%	0.9%
2025 Estimated Other Races	9.3%	9.8%	9.6%
2025 Estimated Hispanic	9.3%	9.9%	9.7%
<b>Income</b>			
2025 Estimated Average Household Income	\$92,266	\$92,912	\$95,820
2025 Estimated Median Household Income	\$74,967	\$76,161	\$78,120
2025 Estimated Per Capita Income	\$36,577	\$37,474	\$38,808
<b>Education (Age 25+)</b>			
2025 Estimated Elementary (Grade Level 0 to 8)	4.5%	3.3%	2.9%
2025 Estimated Some High School (Grade Level 9 to 11)	6.6%	6.7%	6.8%
2025 Estimated High School Graduate	33.0%	32.0%	31.9%
2025 Estimated Some College	23.8%	22.9%	23.6%
2025 Estimated Associates Degree Only	8.1%	11.6%	11.9%
2025 Estimated Bachelors Degree Only	16.2%	16.8%	16.1%
2025 Estimated Graduate Degree	7.8%	6.7%	6.8%
<b>Business</b>			
2025 Estimated Total Businesses	318	674	782
2025 Estimated Total Employees	2,925	5,018	5,625
2025 Estimated Employee Population per Business	9.2	7.4	7.2
2025 Estimated Residential Population per Business	20.3	22.0	22.2

©2026, Sites USA, Chandler, Arizona, 480-491-1112 Demographic Source: Applied Geographic Solutions 11/2025, TIGER Geography - RS1

This report was produced using data from private and government sources deemed to be reliable. The information herein is provided without representation or warranty.

*For more information, please contact:*

**JEFF OLSON** 503.957.1452 | [jeff@cra-nw.com](mailto:jeff@cra-nw.com)

**KELLI MAKS** 503.680.3765 | [kelli@cra-nw.com](mailto:kelli@cra-nw.com)



KNOWLEDGE

RELATIONSHIPS

EXPERIENCE



**COMMERCIAL  
REALTY ADVISORS  
NORTHWEST LLC**

*Licensed brokers in Oregon & Washington*

 15350 SW Sequoia Parkway, Suite 198 • Portland, Oregon 97224



[www.cra-nw.com](http://www.cra-nw.com)



503.274.0211

The information herein has been obtained from sources we deem reliable. We do not, however, guarantee its accuracy. All information should be verified prior to purchase/leasing. View the Real Estate Agency Pamphlet by visiting our website, [www.cra-nw.com/home/agency-disclosure.html](http://www.cra-nw.com/home/agency-disclosure.html). CRA PRINTS WITH 30% POST-CONSUMER, RECYCLED-CONTENT MATERIAL.