

CEDAR CREEK PLAZA SHOPS

➤ PRIME RETAIL FOR LEASE IN SHERWOOD, OREGON ◀

AVAILABLE



Cedar Creek Plaza is approximately 59,000 SF of retail and medical space. It is located in Sherwood, one of the fastest growing cities in Oregon (6.7% growth) and in the world-renowned wine country of the Willamette Valley.

LOCATION

Pacific Hwy 99W and Edy Road | Sherwood, OR

AVAILABLE SPACE

- 1,446 SF
- 1,500 SF

RENTAL RATE

Please call for details

TRAFFIC COUNTS

Pacific Hwy 99W – 37,011 ADT ('24)
SW Edy Rd – 10,689 ADT ('24)

HIGHLIGHTS

- Located in the retail heart of Sherwood, at the main signalized intersection.
- High traffic center with easy access and visibility from Pacific Hwy 99W.
- The area combines strong daytime population employment with an affluent residential population.
- Co-tenants include Planet Fitness, Hops 'n Drops, IHOP, Mud Bay, Starbucks, GNC and OnPoint Community Credit Union.
- Nearby retailers include Safeway, Walgreens, Kohls, Dollar Tree, Petco, McMenamins Sherwood, Target, Walmart, and many more.



COMMERCIAL
REALTY ADVISORS
NORTHWEST LLC

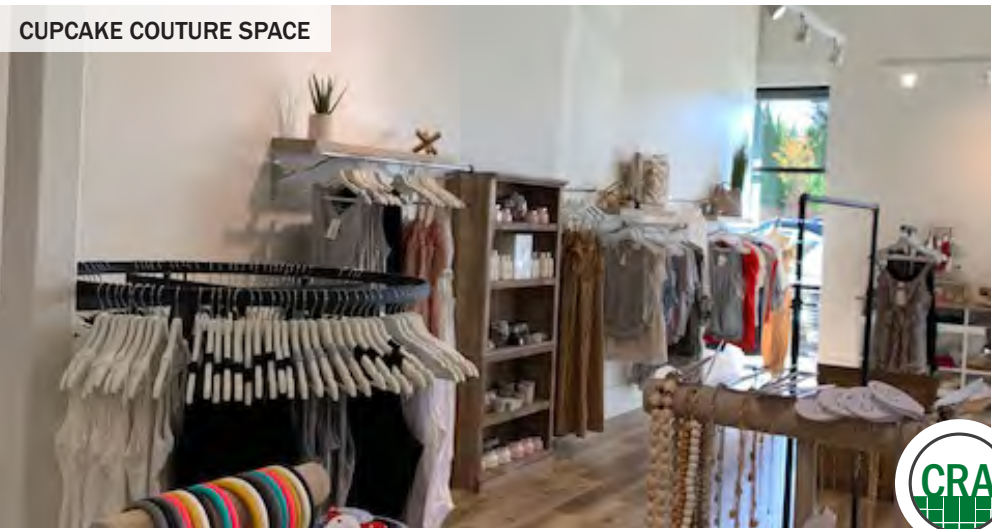
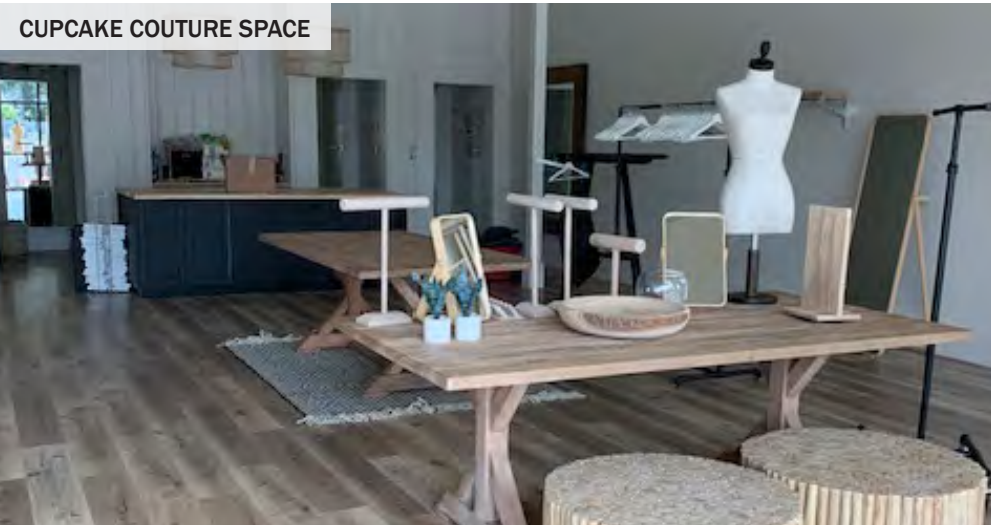
Mark Banta

503.758.9573 | mark@cra-nw.com

503.274.0211
www.cra-nw.com

SHOP BUILDING WITH AVAILABLE SPACE

CEDAR CREEK PLAZA
PACIFIC HWY 99W AND EDY ROAD
SHERWOOD, OR



CEDAR CREEK PLAZA
PACIFIC HWY 99W AND EDY ROAD
SHERWOOD, OR



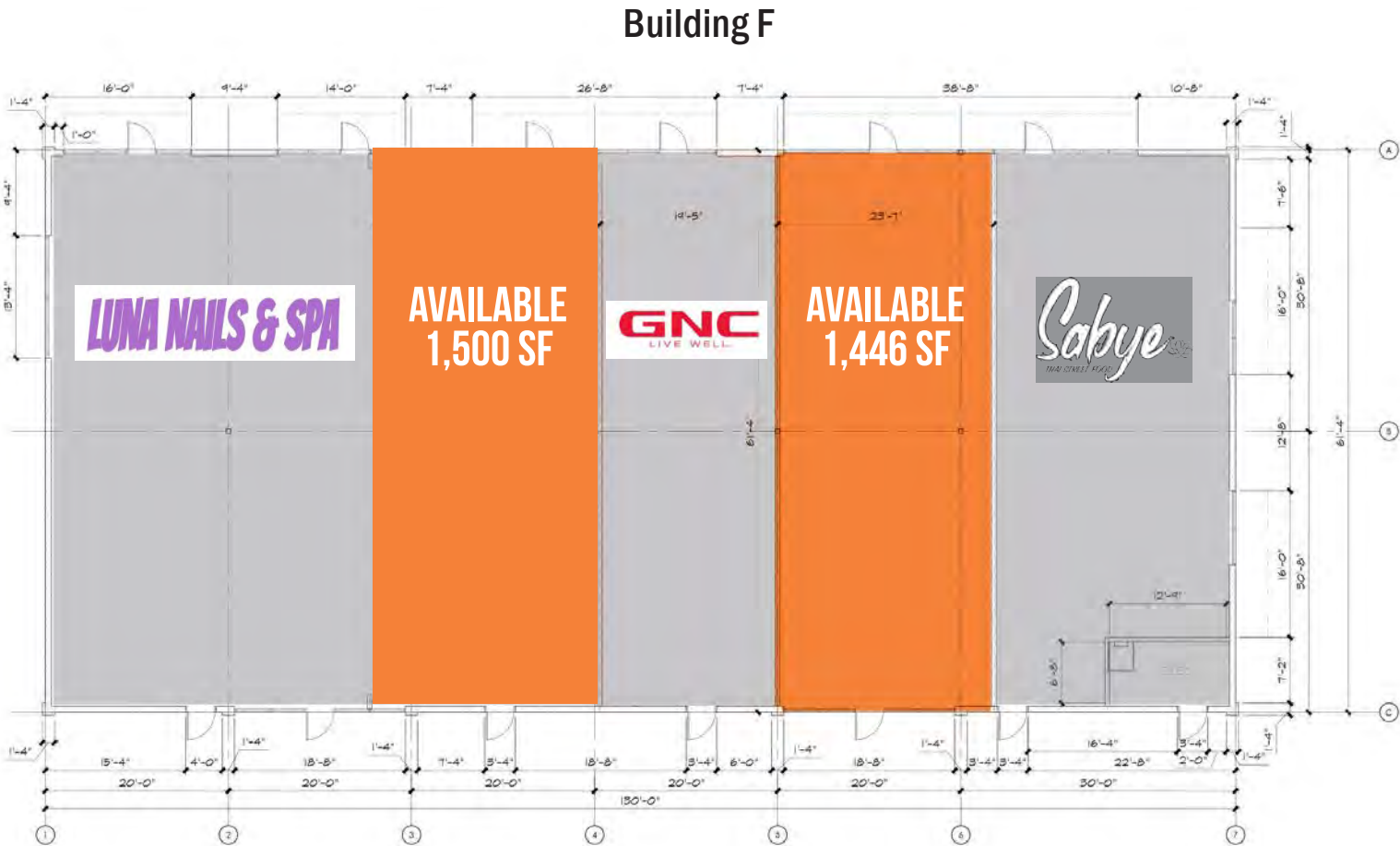
SITE PLAN

CEDAR CREEK PLAZA
PACIFIC HWY 99W AND EDY ROAD
SHERWOOD, OR



BUILDING F FLOOR PLAN

CEDAR CREEK PLAZA
PACIFIC HWY 99W AND EDY ROAD
SHERWOOD, OR



CEDAR CREEK PLAZA PACIFIC HWY 99W AND EDY ROAD

SHERWOOD, OR

DEMOGRAPHIC SUMMARY

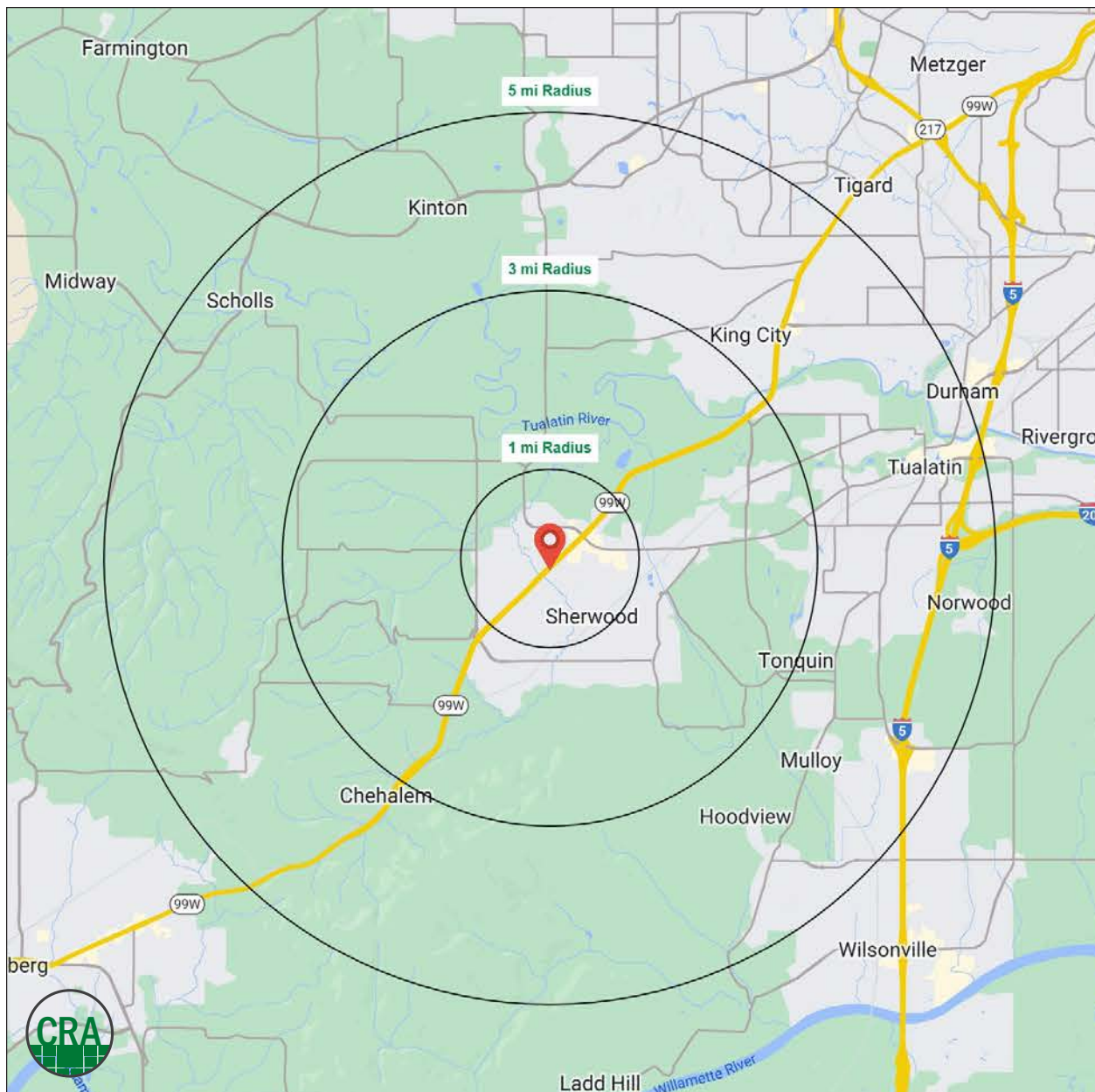
Source: Regis - SitesUSA (2025)	1 MILE	3 MILE	5 MILE
Estimated Population 2025	12,065	30,145	109,745
Estimated Households	4,279	10,821	42,483
Average HH Income	\$149,173	\$159,257	\$152,759
Median Home Value	\$577,825	\$609,832	\$626,420
Daytime Demographics 16+	6,507	19,713	75,623
Some College or Higher	87.1%	81.3%	80.1%

\$149,907

Average Household Income
1 MILE RADIUS

38.3

Median Age
1 MILE RADIUS



Summary Profile

2010-2020 Census, 2025 Estimates with 2030 Projections
Calculated using Weighted Block Centroid from Block Groups



Lat/Lon: 45.3659/-122.8503

Cedar Creek Plaza Sherwood, OR 97140	1 mi radius	3 mi radius	5 mi radius
Population			
2025 Estimated Population	12,065	30,145	109,745
2030 Projected Population	11,741	29,537	107,505
2020 Census Population	11,705	29,730	106,565
2010 Census Population	10,100	25,497	92,173
Projected Annual Growth 2025 to 2030	-0.5%	-0.4%	-0.4%
Historical Annual Growth 2010 to 2025	1.3%	1.2%	1.3%
2025 Median Age	38.3	40.0	40.8
Households			
2025 Estimated Households	4,279	10,821	42,483
2030 Projected Households	4,249	10,817	42,392
2020 Census Households	4,107	10,406	40,660
2010 Census Households	3,690	9,051	35,566
Projected Annual Growth 2025 to 2030	-0.1%	-	-
Historical Annual Growth 2010 to 2025	1.1%	1.3%	1.3%
Race and Ethnicity			
2025 Estimated White	77.0%	77.6%	73.9%
2025 Estimated Black or African American	1.3%	1.5%	2.2%
2025 Estimated Asian or Pacific Islander	7.8%	7.7%	10.2%
2025 Estimated American Indian or Native Alaskan	0.9%	0.7%	0.6%
2025 Estimated Other Races	13.1%	12.5%	13.1%
2025 Estimated Hispanic	13.5%	13.0%	13.3%
Income			
2025 Estimated Average Household Income	\$149,173	\$159,257	\$152,759
2025 Estimated Median Household Income	\$114,894	\$128,022	\$123,452
2025 Estimated Per Capita Income	\$53,122	\$57,271	\$59,223
Education (Age 25+)			
2025 Estimated Elementary (Grade Level 0 to 8)	1.8%	2.1%	2.7%
2025 Estimated Some High School (Grade Level 9 to 11)	3.3%	2.5%	2.5%
2025 Estimated High School Graduate	13.1%	14.1%	14.7%
2025 Estimated Some College	23.9%	22.6%	20.9%
2025 Estimated Associates Degree Only	7.9%	8.8%	8.5%
2025 Estimated Bachelors Degree Only	32.8%	32.6%	32.9%
2025 Estimated Graduate Degree	17.1%	17.3%	17.8%
Business			
2025 Estimated Total Businesses	564	1,591	5,459
2025 Estimated Total Employees	3,263	12,101	44,324
2025 Estimated Employee Population per Business	5.8	7.6	8.1
2025 Estimated Residential Population per Business	21.4	19.0	20.1

©2025, Sites USA, Chandler, Arizona, 480-491-1112 Demographic Source: Applied Geographic Solutions 5/2025, TIGER Geography - RS1

This report was produced using data from private and government sources deemed to be reliable. The information herein is provided without representation or warranty.

For more information, please contact:

MARK BANTA 503.758.9573 | mark@cra-nw.com



KNOWLEDGE

RELATIONSHIPS

EXPERIENCE



**COMMERCIAL
REALTY ADVISORS
NORTHWEST LLC**

Licensed brokers in Oregon & Washington

 15350 SW Sequoia Parkway, Suite 198 • Portland, Oregon 97224



www.cra-nw.com



503.274.0211

The information herein has been obtained from sources we deem reliable. We do not, however, guarantee its accuracy. All information should be verified prior to purchase/leasing. View the Real Estate Agency Pamphlet by visiting our website, www.cra-nw.com/home/agency-disclosure.html. CRA PRINTS WITH 30% POST-CONSUMER, RECYCLED-CONTENT MATERIAL.