

FOR LEASE • CANBY, OREGON

# CANBY MARKET CENTER



## LOCATION

Highway 99E and Sequoia Parkway in Canby, Oregon

## AVAILABLE SPACES

- 1,113 SF
- 1,200 SF (former teriyaki restaurant)
- 1,258 SF (former chiropractor office)
- 1,580 SF (former bakery)

## RENTAL RATE

Please call for details

## HIGHLIGHTS

- Premier shopping center in Canby
- Anchored by Fred Meyer, Umpqua Bank and Canby Liquor
- Highly visible from Highway 99E
- Adjacent to the Wilco Farm Store

## TRAFFIC COUNT

Highway 99E – 22,193 ADT ('25)

Sequoia Pkwy – 5,210 ADT ('25)



COMMERCIAL  
REALTY ADVISORS  
NORTHWEST LLC

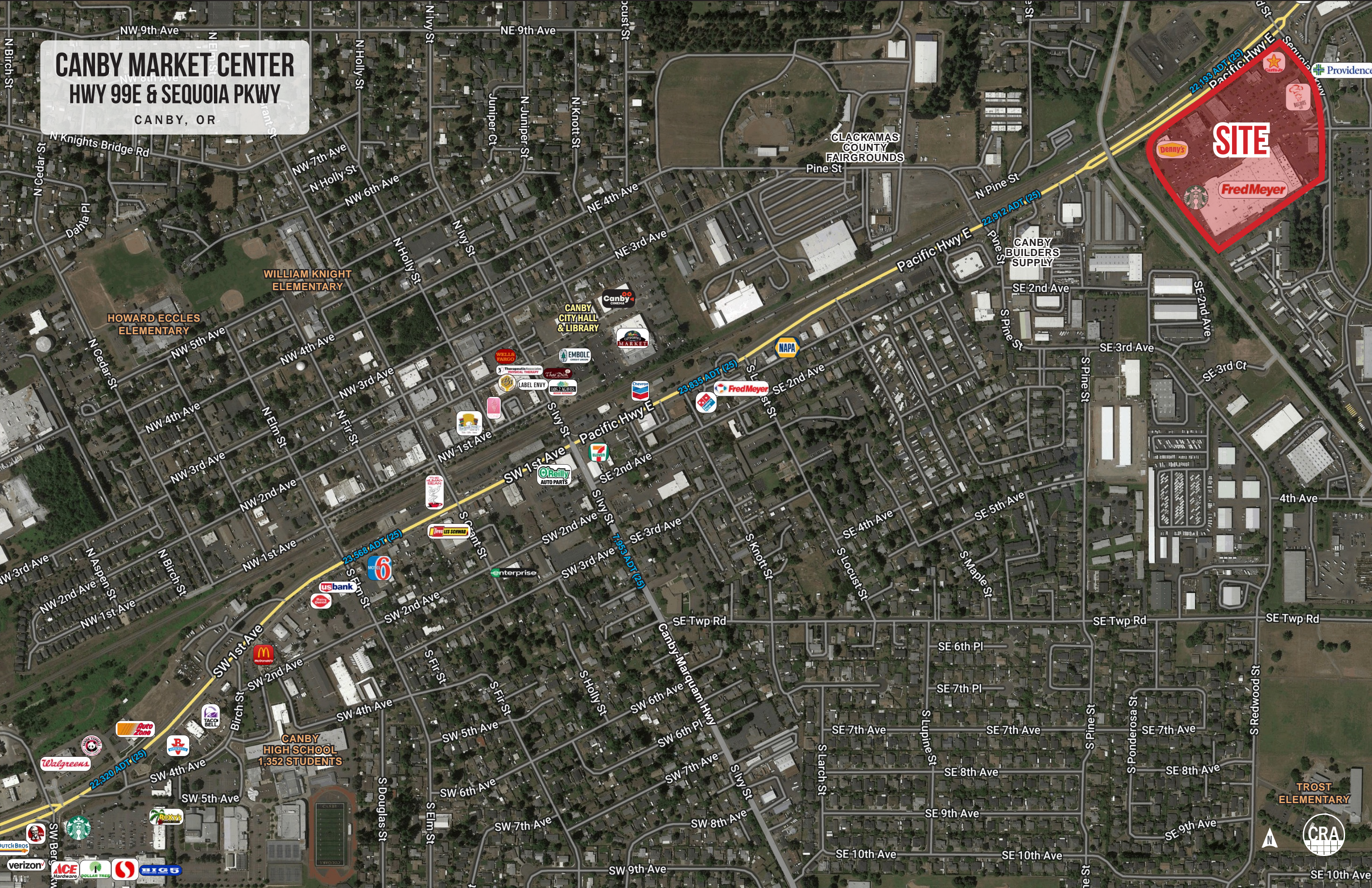
**Rob Kimmelman**  
503.449.2591 | [rob@cra-nw.com](mailto:rob@cra-nw.com)

**503.274.0211**  
[www.cra-nw.com](http://www.cra-nw.com)



# CANBY MARKET CENTER HWY 99E & SEQUOIA PKWY

CANBY, OR



**SITE**

Pennys

Fred Meyer

CANBY BUILDERS SUPPLY

CLACKAMAS COUNTY FAIRGROUNDS

WILLIAM KNIGHT ELEMENTARY

HOWARD ECCLES ELEMENTARY

CANBY CITY HALL & LIBRARY

CANBY HIGH SCHOOL  
1,352 STUDENTS

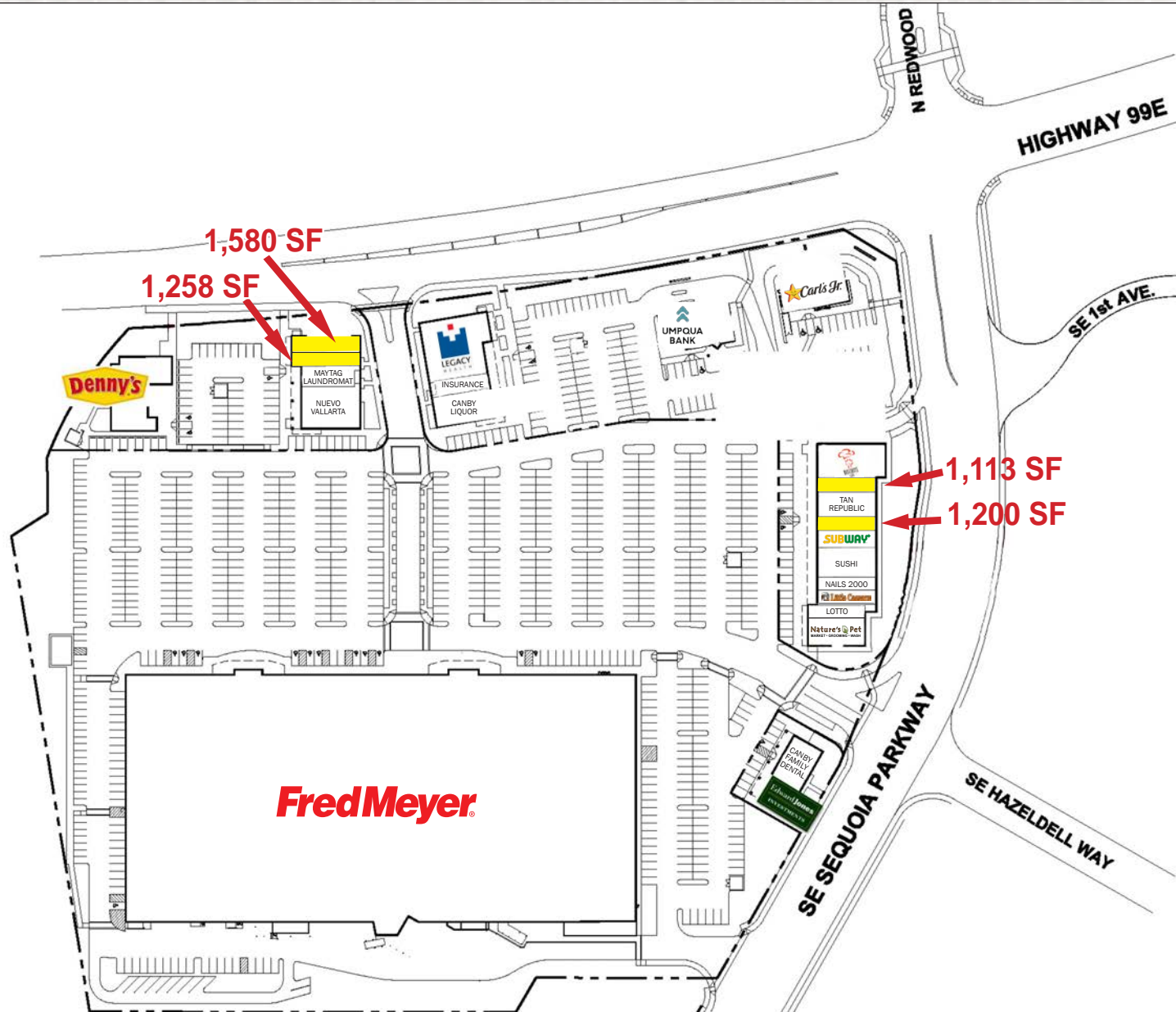
TROST ELEMENTARY





# CANBY MARKET CENTER HWY 99E & SEQUOIA PKWY CANBY, OR

## SITE PLAN



# CANBY MARKET CENTER

## HWY 99E & SEQUOIA PKWY

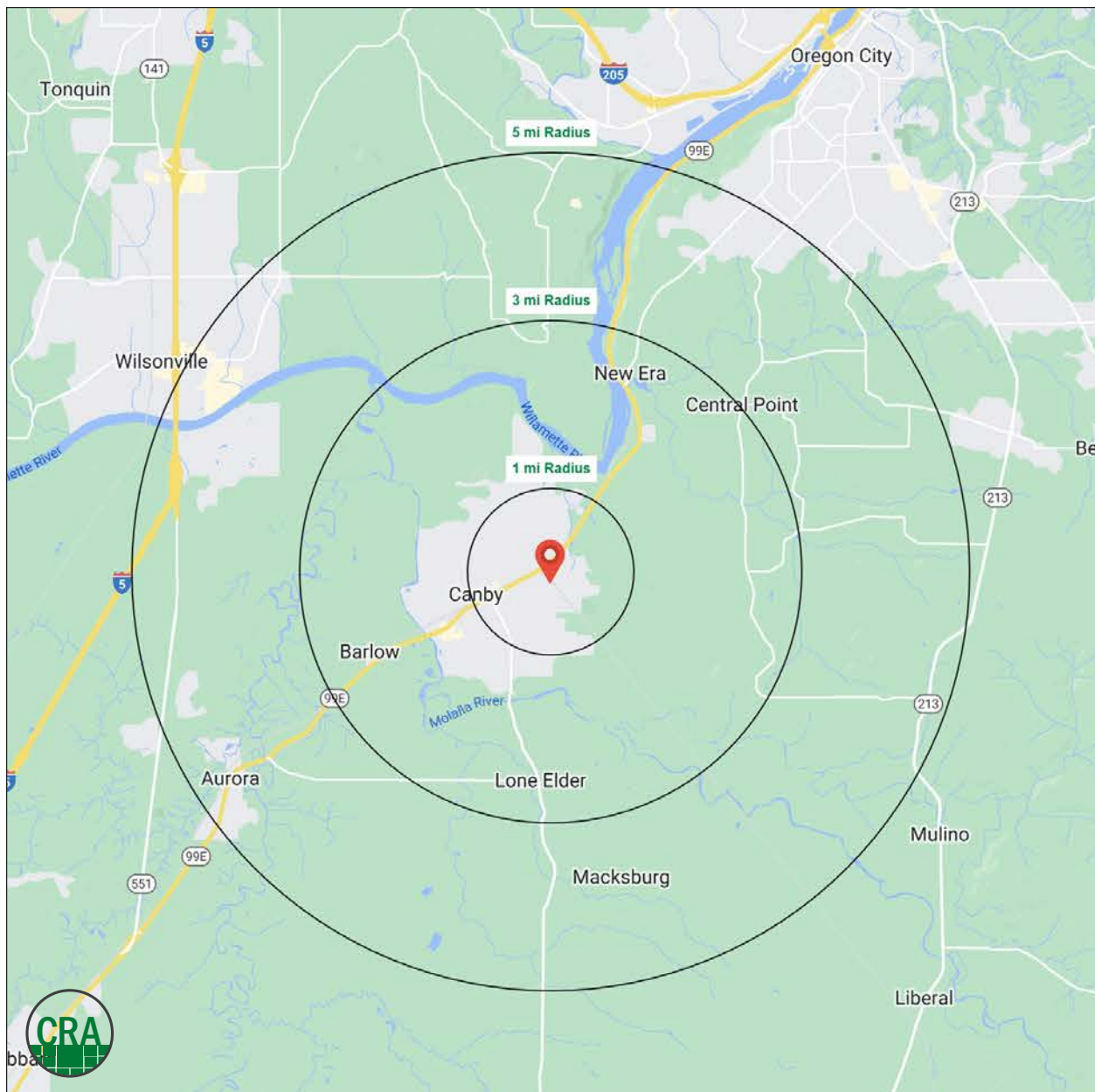
CANBY, OR

### DEMOGRAPHIC SUMMARY

Source: Regis - SitesUSA (2025)	1 MILE	3 MILE	5 MILE
Estimated Population 2025	11,445	22,535	42,996
Average HH Income	\$133,827	\$132,779	\$132,639
Median HH Income	\$106,563	\$105,195	\$102,819
Median Home Value	\$496,454	\$542,892	\$608,934
Daytime Demographics 16+	7,671	16,887	32,101
Some College or Higher	66.2%	68.6%	71.8%

**\$133,827**  
Average Household Income  
1 MILE RADIUS

**34.9**  
Median Age  
1 MILE RADIUS



## Summary Profile

2010-2020 Census, 2025 Estimates with 2030 Projections  
Calculated using Weighted Block Centroid from Block Groups



Lat/Lon: 45.2672/-122.6769

1401 SE 1st Ave Canby, OR 97013	1 mi radius	3 mi radius	5 mi radius
<b>Population</b>			
2025 Estimated Population	11,445	22,535	42,996
2030 Projected Population	11,632	23,116	43,328
2020 Census Population	11,393	21,846	42,488
2010 Census Population	10,577	20,218	38,578
Projected Annual Growth 2025 to 2030	0.3%	0.5%	0.2%
Historical Annual Growth 2010 to 2025	0.5%	0.8%	0.8%
2025 Median Age	37.9	41.3	42.7
<b>Households</b>			
2025 Estimated Households	4,202	8,409	16,864
2030 Projected Households	4,351	8,800	17,284
2020 Census Households	4,017	7,949	16,272
2010 Census Households	3,590	7,253	14,947
Projected Annual Growth 2025 to 2030	0.7%	0.9%	0.5%
Historical Annual Growth 2010 to 2025	1.1%	1.1%	0.9%
<b>Race and Ethnicity</b>			
2025 Estimated White	76.8%	80.2%	81.1%
2025 Estimated Black or African American	0.8%	0.7%	0.9%
2025 Estimated Asian or Pacific Islander	2.6%	2.5%	3.5%
2025 Estimated American Indian or Native Alaskan	0.8%	0.7%	0.7%
2025 Estimated Other Races	19.1%	15.9%	13.8%
2025 Estimated Hispanic	18.9%	15.7%	13.7%
<b>Income</b>			
2025 Estimated Average Household Income	\$133,827	\$132,779	\$132,639
2025 Estimated Median Household Income	\$106,563	\$105,195	\$102,819
2025 Estimated Per Capita Income	\$49,145	\$49,649	\$52,134
<b>Education (Age 25+)</b>			
2025 Estimated Elementary (Grade Level 0 to 8)	3.7%	3.4%	2.8%
2025 Estimated Some High School (Grade Level 9 to 11)	6.7%	6.3%	4.7%
2025 Estimated High School Graduate	23.4%	21.6%	20.8%
2025 Estimated Some College	27.0%	27.1%	24.4%
2025 Estimated Associates Degree Only	7.4%	8.0%	8.8%
2025 Estimated Bachelors Degree Only	20.8%	22.5%	25.8%
2025 Estimated Graduate Degree	11.0%	11.0%	12.7%
<b>Business</b>			
2025 Estimated Total Businesses	566	1,214	2,365
2025 Estimated Total Employees	4,232	9,230	17,052
2025 Estimated Employee Population per Business	7.5	7.6	7.2
2025 Estimated Residential Population per Business	20.2	18.6	18.2

©2025, Sites USA, Chandler, Arizona, 480-491-1112 Demographic Source: Applied Geographic Solutions 5/2025, TIGER Geography - RS1

This report was produced using data from private and government sources deemed to be reliable. The information herein is provided without representation or warranty.



*For more information, please contact:*

**ROB KIMMELMAN** 503.449.2591 | rob@cra-nw.com



KNOWLEDGE

RELATIONSHIPS

EXPERIENCE



**COMMERCIAL  
REALTY ADVISORS  
NORTHWEST LLC**

*Licensed brokers in Oregon & Washington*

 15350 SW Sequoia Parkway, Suite 198 • Portland, Oregon 97224



**www.cra-nw.com**



**503.274.0211**

The information herein has been obtained from sources we deem reliable. We do not, however, guarantee its accuracy. All information should be verified prior to purchase/leasing. View the Real Estate Agency Pamphlet by visiting our website, [www.cra-nw.com/home/agency-disclosure.html](http://www.cra-nw.com/home/agency-disclosure.html). CRA PRINTS WITH 30% POST-CONSUMER, RECYCLED-CONTENT MATERIAL.