

FOR LEASE • CANBY, OREGON

HISTORIC CITY HALL



ADDRESS

182 N Holly Street | Canby, Oregon 97013

AVAILABLE SPACE

- 1,800 SF Main Level
 - 1,800 SF Basement
- CAN COMBINE
FOR 3,600 SF

RENTAL RATE

Please call for details

TRAFFIC COUNTS

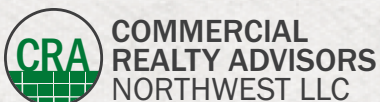
SE 1st Ave (Pacific Hwy E) – 24,978 ADT ('22)

S Ivy St – 6,383 ADT ('22)



HIGHLIGHTS

- This former city hall and administrative offices were recently renovated and is ideal for retail/office space.
- The building was constructed in 1937 as part of President Roosevelt's Public Works Administration. Canby's red brick city hall building was designated a local historic landmark in 2016.
- The historic renovation received a Restore Oregon, DeMuro Award Recognition: Historic Preservation, Skilled Craftsmanship, Oregon Heritage, Adaptive Reuse, 2023 DeMuro Award Winner: Historic Canby City Hall, 1936-1937, Canby – Restore Oregon.
- Plentiful public parking nearby.

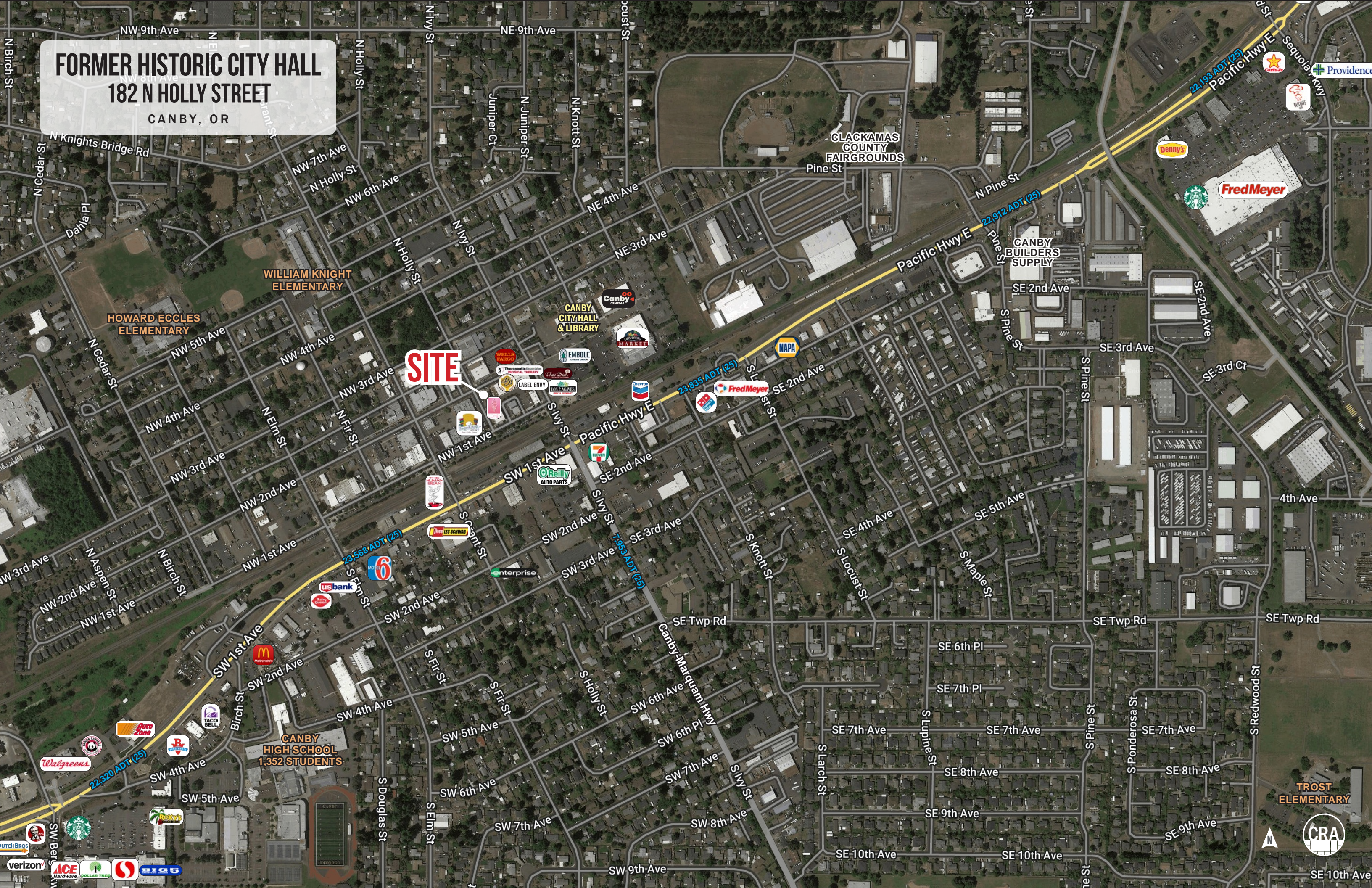


Robbie Kimmelman
503.449.2591 | robbie@cra-nw.com

503.274.0211
www.cra-nw.com



FORMER HISTORIC CITY HALL
182 N HOLLY STREET
CANBY, OR



SITE

**WILLIAM KNIGHT
ELEMENTARY**

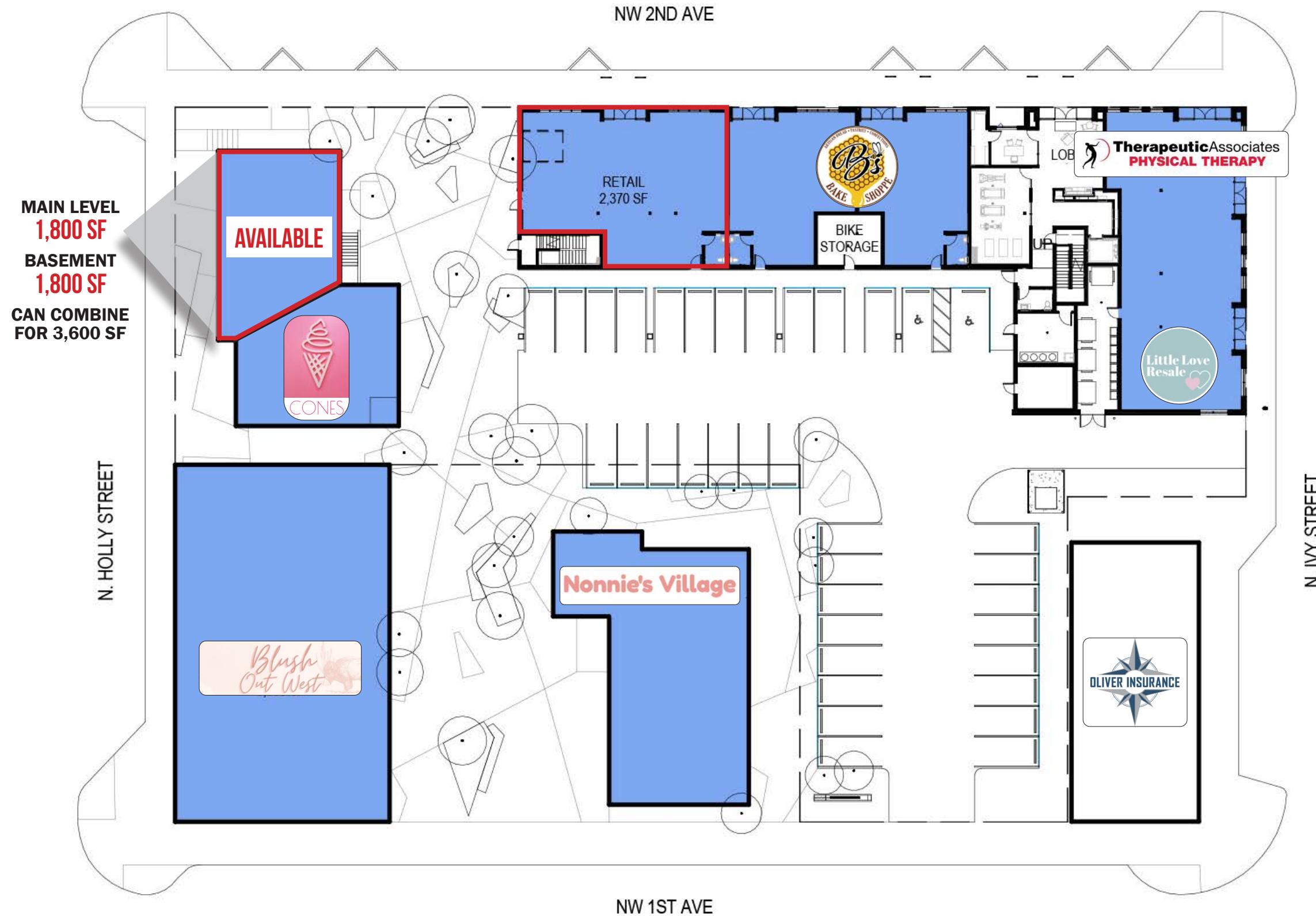
**HOWARD ECCLES
ELEMENTARY**

**CANBY
HIGH SCHOOL
1,352 STUDENTS**

**CLACKAMAS
COUNTY
FAIRGROUNDS**

**TROST
ELEMENTARY**

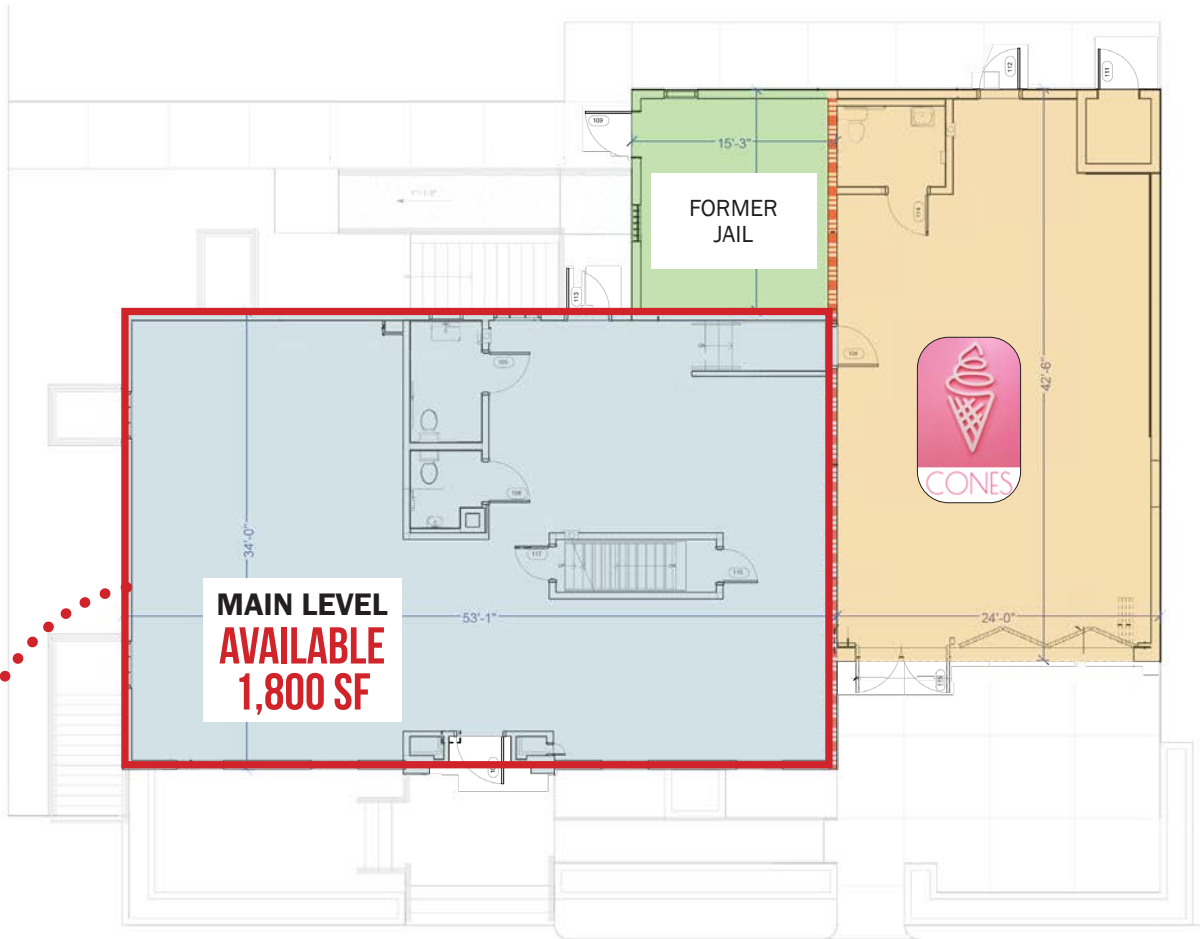




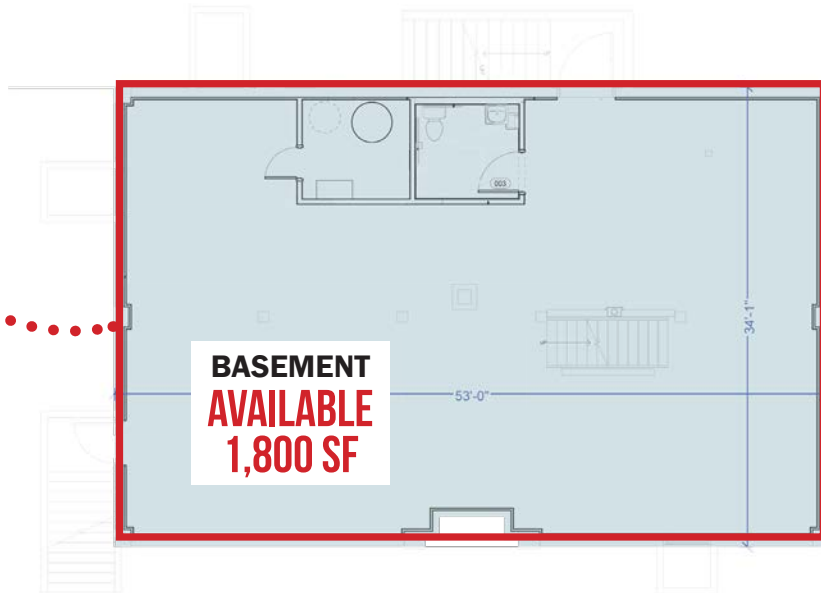
FORMER HISTORIC CITY HALL 182 N HOLLY STREET

FLOOR PLANS

CANBY, OR



**CAN COMBINE
FOR 3,600 SF**



FORMER HISTORIC CITY HALL 182 N HOLLY STREET

CANBY, OR

DEMOGRAPHIC SUMMARY

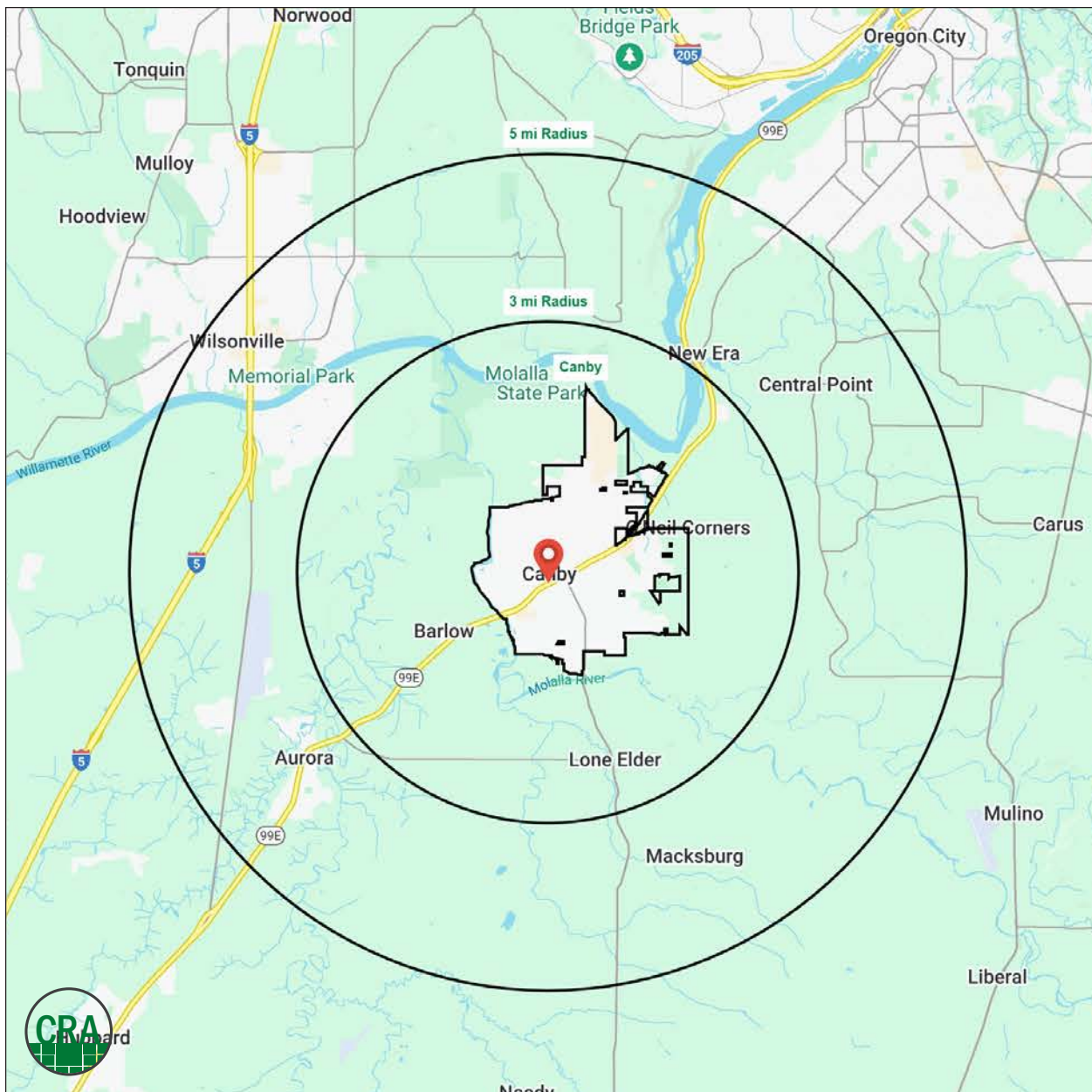
Source: Regis - SitesUSA (2024)	CITY OF CANBY	3 MILE	5 MILE
Estimated Population 2024	18,179	21,926	41,842
Average HH Income	\$123,885	\$126,093	\$120,536
Median HH Income	\$92,613	\$96,333	\$91,376
Median Home Value	\$529,013	\$556,634	\$597,505
Daytime Demographics 16+	13,107	16,673	33,965
Some College or Higher	63.8%	65.1%	68.2%

18,179

Estimated Population 2024
CITY OF CANBY

\$123,885

Average Household Income
CITY OF CANBY



Summary Profile

2010-2020 Census, 2024 Estimates with 2029 Projections
 Calculated using Weighted Block Centroid from Block Groups



Lat/Lon: 45.2627/-122.6957

Canby, OR 97013	Canby	3 mi radius	5 mi radius
Population			
2024 Estimated Population	18,179	21,926	41,842
2029 Projected Population	18,485	22,239	41,905
2020 Census Population	18,126	21,954	42,295
2010 Census Population	16,757	20,398	37,427
Projected Annual Growth 2024 to 2029	0.3%	0.3%	-
Historical Annual Growth 2010 to 2024	0.6%	0.5%	0.8%
2024 Median Age	39.4	41.2	42.0
Households			
2024 Estimated Households	6,815	8,190	16,803
2029 Projected Households	7,002	8,388	16,977
2020 Census Households	6,614	7,991	16,423
2010 Census Households	6,020	7,317	14,582
Projected Annual Growth 2024 to 2029	0.5%	0.5%	0.2%
Historical Annual Growth 2010 to 2024	0.9%	0.9%	1.1%
Race and Ethnicity			
2024 Estimated White	79.2%	80.1%	80.0%
2024 Estimated Black or African American	0.6%	0.6%	1.0%
2024 Estimated Asian or Pacific Islander	2.2%	2.3%	3.5%
2024 Estimated American Indian or Native Alaskan	0.8%	0.8%	0.7%
2024 Estimated Other Races	17.2%	16.3%	14.8%
2024 Estimated Hispanic	17.4%	16.3%	15.0%
Income			
2024 Estimated Average Household Income	\$123,885	\$126,093	\$120,536
2024 Estimated Median Household Income	\$92,613	\$96,333	\$91,376
2024 Estimated Per Capita Income	\$46,552	\$47,198	\$48,511
Education (Age 25+)			
2024 Estimated Elementary (Grade Level 0 to 8)	3.6%	4.0%	3.8%
2024 Estimated Some High School (Grade Level 9 to 11)	6.4%	6.0%	4.8%
2024 Estimated High School Graduate	26.1%	24.8%	23.3%
2024 Estimated Some College	26.3%	26.7%	23.3%
2024 Estimated Associates Degree Only	7.2%	7.7%	7.4%
2024 Estimated Bachelors Degree Only	20.3%	20.8%	24.6%
2024 Estimated Graduate Degree	10.1%	9.9%	12.8%
Business			
2024 Estimated Total Businesses	912	1,222	2,480
2024 Estimated Total Employees	7,311	9,421	19,232
2024 Estimated Employee Population per Business	8.0	7.7	7.8
2024 Estimated Residential Population per Business	19.9	17.9	16.9

For more information, please contact:

ROBBIE KIMMELMAN 503.449.2591 | robbie@cra-nw.com



KNOWLEDGE

RELATIONSHIPS

EXPERIENCE



**COMMERCIAL
REALTY ADVISORS
NORTHWEST LLC**

Licensed brokers in Oregon & Washington

 15350 SW Sequoia Parkway, Suite 198 • Portland, Oregon 97224



www.cra-nw.com



503.274.0211

The information herein has been obtained from sources we deem reliable. We do not, however, guarantee its accuracy. All information should be verified prior to purchase/leasing. View the Real Estate Agency Pamphlet by visiting our website, www.cra-nw.com/home/agency-disclosure.html. CRA PRINTS WITH 30% POST-CONSUMER, RECYCLED-CONTENT MATERIAL.