

ARGYLE SQUARE

WILSONVILLE, OR

FOR LEASE
2,505 - 16,051 SF

AVAILABLE SPACE

25700 SW Argyle Ave, Suite F

- 2,505 SF

25699 SW Argyle Ave, Suite F

- 2,896 SF - **AT LEASE!**

8315 SW Jack Burns Blvd C

- 16,051 SF

RENTAL RATE

Please call for details

HIGHLIGHTS

- Argyle Square is a 380,000 SF regional shopping center on 43 acres off I-5 just south of Portland.
- Anchored by Costco, Target and PetSmart.
- Dominant shopping center in the Wilsonville Trade Area.
- Convenient freeway access.

TRAFFIC COUNTS

Elligsen Rd – 15,276 ADT ('25)

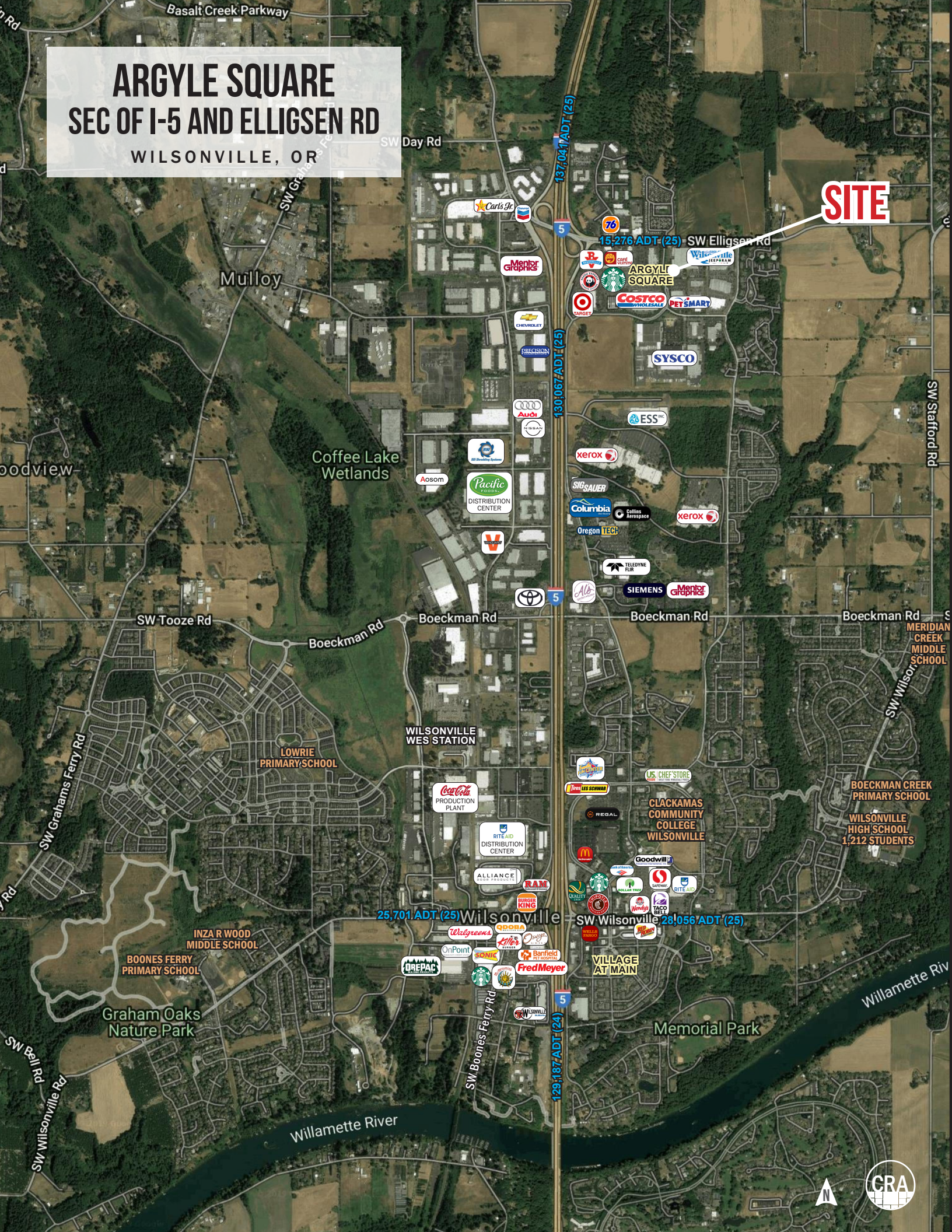
Interstate 5 – 137,041 ADT ('25)



ARGYLE SQUARE SEC OF I-5 AND ELLIGSEN RD

WILSONVILLE, OR

SITE



ARGYLE SQUARE SEC OF I-5 AND ELLIGSEN RD WILSONVILLE, OR



COSTCO
WHOLESALE

COSTCO
GASOLINE

TARGET

PETSMART

SITE

WILSONVILLE
STAFFORD
BEVERAGE
DAVID STONE
NOW OPEN

GameStop
SUPERCUTS
SUBWAY

SITE

zoom+care



PIZZA
SCHNITZLER

STRETCH ZONE
COMING SOON!

CLUB PILATES

Lenza
EYE CENTER

chiroxone

PANDA EXPRESS
CHINESE KITCHEN

SITE

Lenza
EYE CENTER

DISCOUNT
TIRE

cafe Yummy

R
RITE AID

MOTEL 6

76

SW Elligsen Rd
15,276 ADT (25)

SW Parkway Ave

BW Best Western
PLUS



N

SITE PLAN

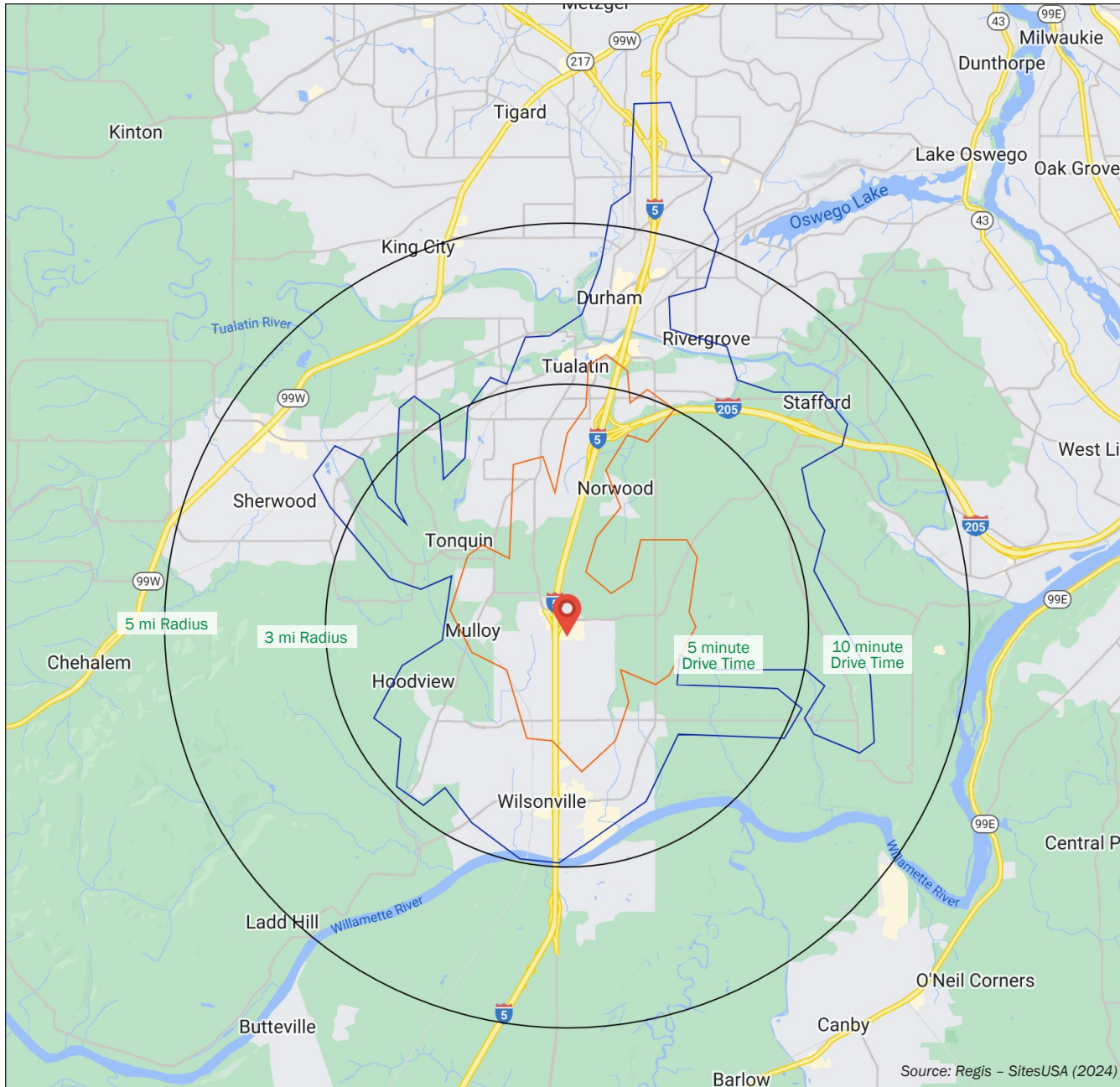
ARGYLE SQUARE SEC OF I-5 AND ELLIGSEN RD WILSONVILLE, OR



COMMERCIAL
REALTY ADVISORS
NORTHWEST LLC

Ashley Heichelbech
503.490.7212 | ashley@cra-nw.com

503.274.0211
www.cra-nw.com



ARGYLE SQUARE SEC OF I-5 AND ELLIGSEN RD

WILSONVILLE, OR

DEMOGRAPHICS

2024 Estimated Population

3 mile - 40,701
5 mile - 100,711
5 min - 13,838
10 min - 59,290

Average HH Income

3 mile - \$149,529
5 mile - \$151,914
5 min - \$137,988
10 min - \$147,382

Median Home Value

3 mile - \$667,868
5 mile - \$659,785
5 min - \$635,975
10 min - \$664,261

Daytime Demographics 16+

3 mile - 36,633
5 mile - 91,330
5 min - 18,775
10 min - 76,309

\$149,529

Average Household Income

3 MILE RADIUS

For more information, please contact:

ASHLEY HEICHELBECH

503.490.7212 | ashley@cra-nw.com



KNOWLEDGE

RELATIONSHIPS

EXPERIENCE



**COMMERCIAL
REALTY ADVISORS
NORTHWEST LLC**

Licensed brokers in Oregon & Washington

15350 SW Sequoia Pkwy, Suite 198

Portland, Oregon 97224

www.cra-nw.com

503.274.0211

The information herein has been obtained from sources we deem reliable. We do not, however, guarantee its accuracy. All information should be verified prior to purchase/leasing. View the Real Estate Agency Pamphlet by visiting our website, www.cra-nw.com/home/agency-disclosure.html. CRA PRINTS WITH 30% POST-CONSUMER, RECYCLED-CONTENT MATERIAL.