

SE PORTLAND CHURCH

FOR SALE

ADDRESS

2828 SE Stephens St, Portland, OR 97217

PROPERTY SIZE

42,000 SF (0.96 AC)

BUILDING SIZE

11,568 SF

ASKING PRICE

\$1,750,000

ZONING

R5 – Residential 5,000

HIGHLIGHTS

- Built in 1964
- Beautiful lot with trees, gardens, and outdoor play area
- Abundant parking
- Quiet location in the Hosford-Abernethy Neighborhood
- Main sanctuary and smaller secondary sanctuary
- Full basement with classrooms, kitchen, offices, meeting rooms, storage, and much more
- Elevator service



**COMMERCIAL
REALTY ADVISORS
NORTHWEST LLC**

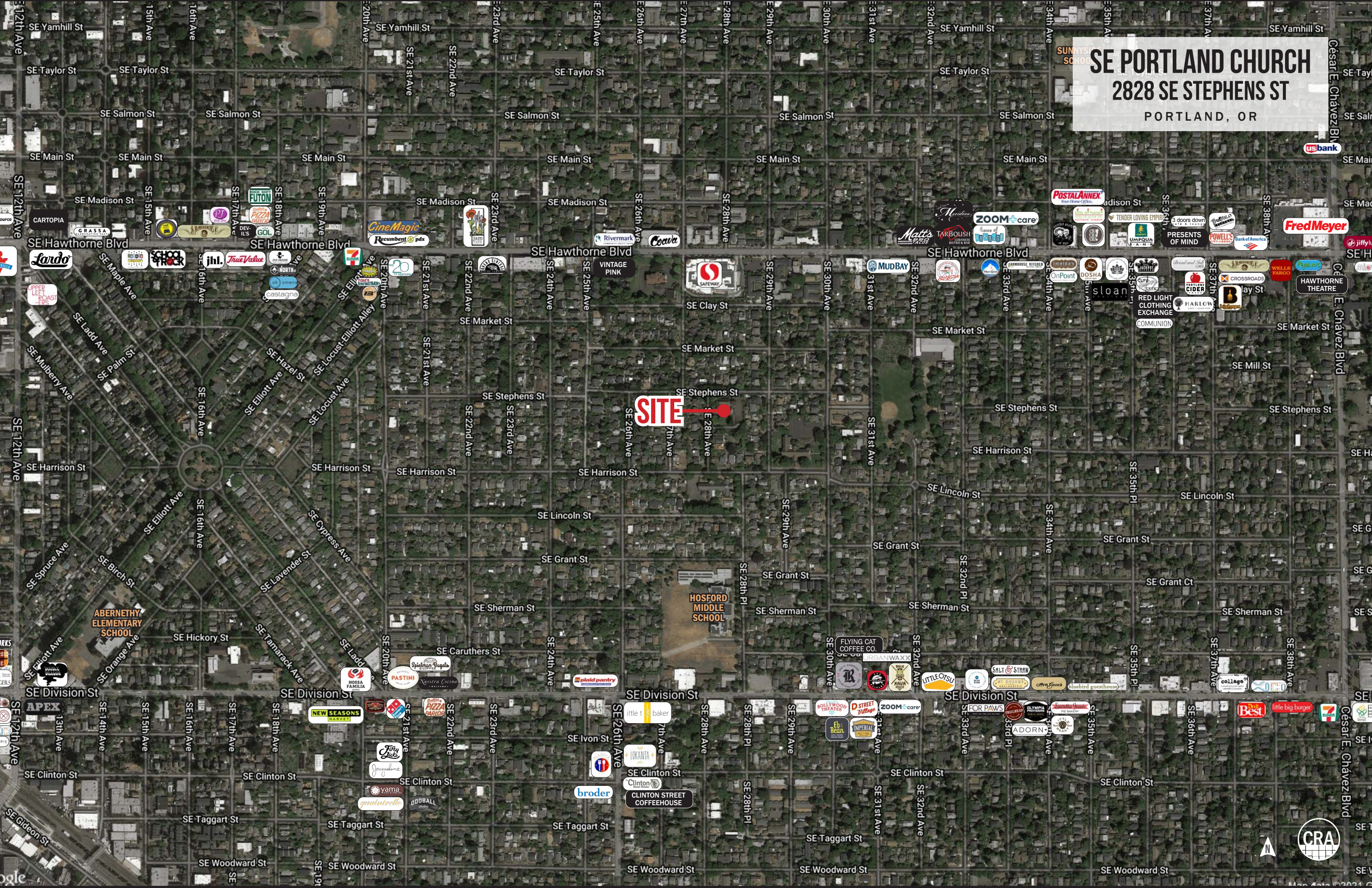
Bob LeFeber 503.807.4174 | bob@cra-nw.com
Sam LeFeber 503.866.1956 | sam@cra-nw.com

503.274.0211
www.cra-nw.com

The information herein has been obtained from sources we deem reliable. We do not, however, guarantee its accuracy. All information should be verified prior to purchase/leasing. View the Real Estate Agency Pamphlet by visiting our website, www.cra-nw.com/home/agency-disclosure.html. CRA PRINTS WITH 30% POST-CONSUMER, RECYCLED-CONTENT MATERIAL.



SE PORTLAND CHURCH
2828 SE STEPHENS ST
PORTLAND, OR



SE PORTLAND CHURCH
2828 SE STEPHENS ST
PORTLAND, OR

SE Stephens Street

SE 28th Avenue

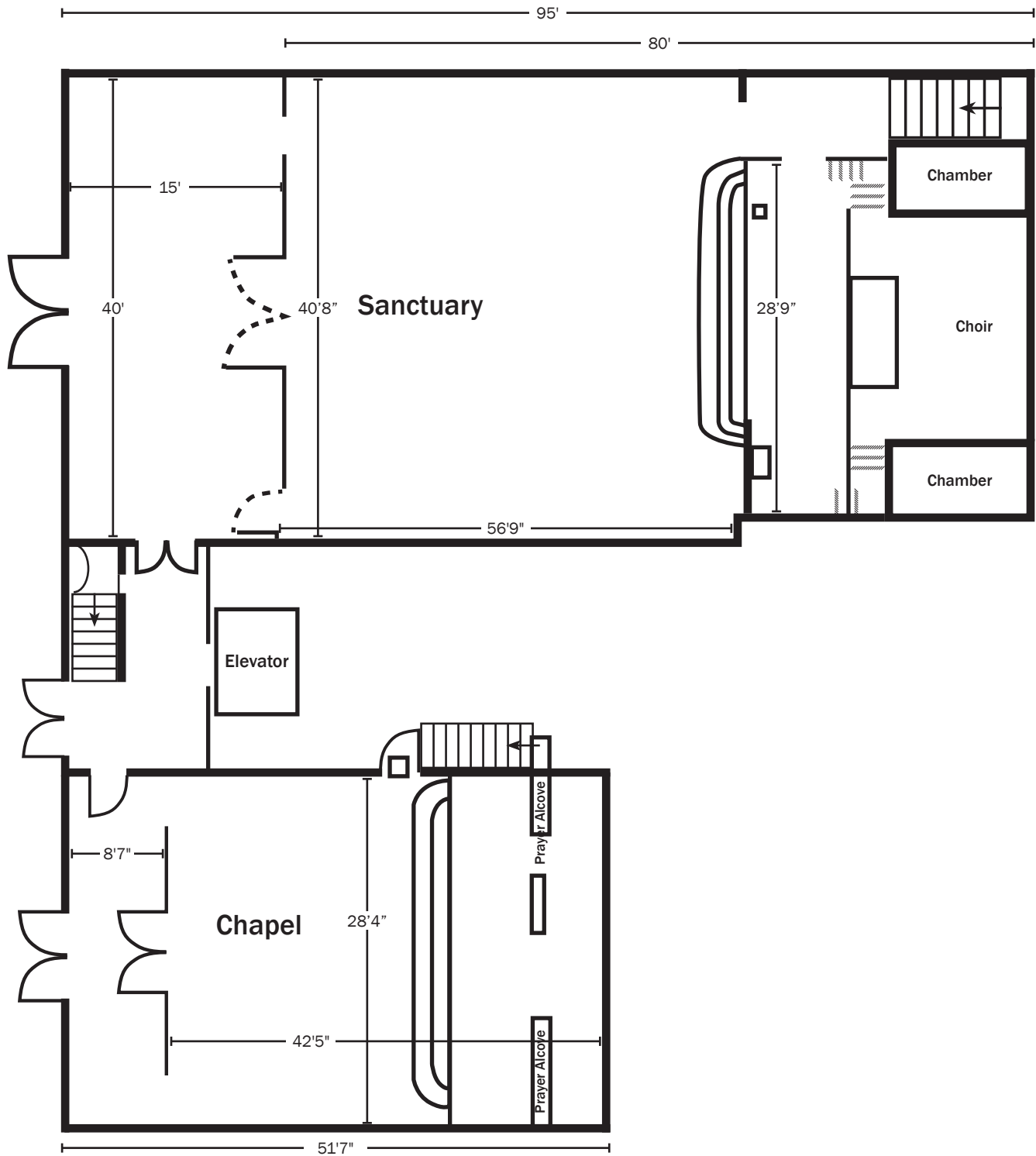
SE 29th Avenue



SITE

SE PORTLAND CHURCH
2828 SE STEPHENS ST
PORTLAND, OR

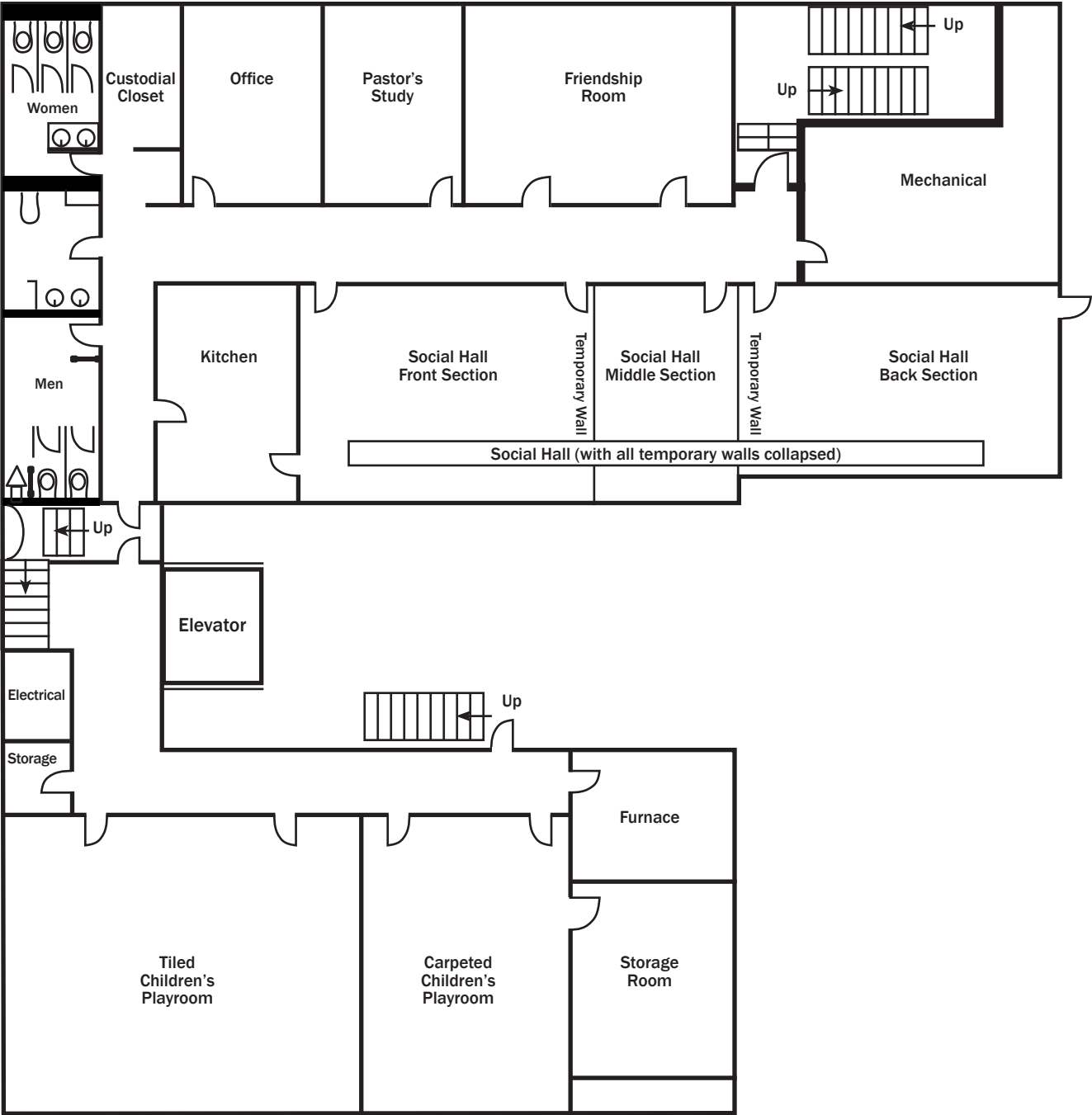
MAIN LEVEL FLOOR PLAN



SE PORTLAND CHURCH
2828 SE STEPHENS ST

LOWER LEVEL FLOOR PLAN

PORTLAND, OR



SE PORTLAND CHURCH

2828 SE STEPHENS ST

PORTLAND, OR

DEMOGRAPHIC SUMMARY

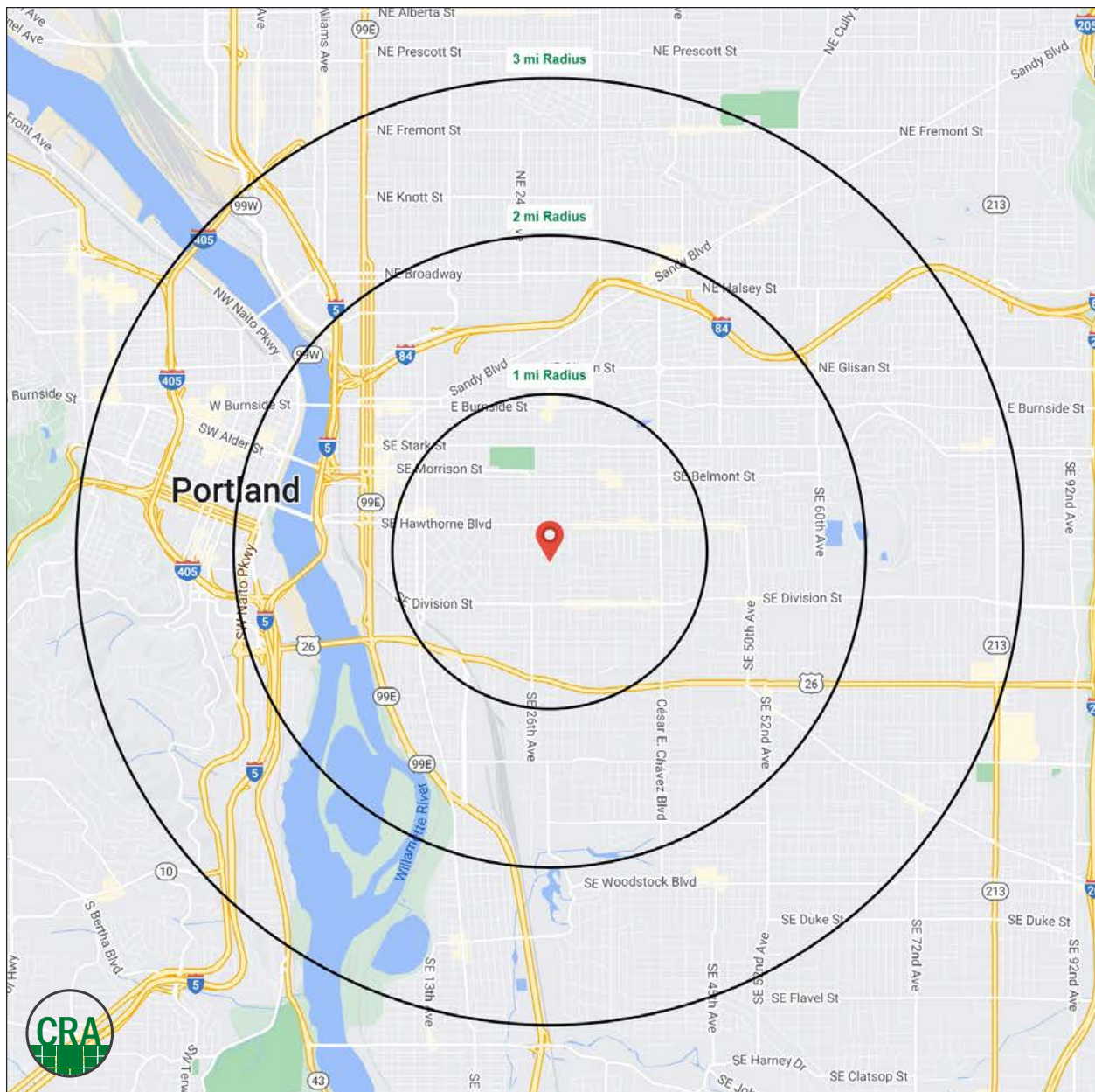
Source: Regis – SitesUSA (2024)	1 MILE	2 MILE	3 MILE
Estimated Population 2024	33,858	103,138	233,560
Estimated Households	17,042	52,757	119,212
Average HH Income	\$139,398	\$129,497	\$134,694
Median Home Value	\$680,347	\$665,305	\$655,579
Daytime Demographics 16+	21,673	121,639	271,015
Some College or Higher	87.8%	86.4%	85.0%

\$139,398

Average Household Income
1 MILE RADIUS

34.9

Median Age
1 MILE RADIUS



Summary Profile

2010-2020 Census, 2024 Estimates with 2029 Projections
Calculated using Weighted Block Centroid from Block Groups



Lat/Lon: 45.5095/-122.6371

2828 SE Stephens St Portland, OR 97214	1 mi radius	2 mi radius	3 mi radius
Population			
2024 Estimated Population	33,858	103,138	233,560
2029 Projected Population	32,904	101,071	229,577
2020 Census Population	35,702	104,796	234,435
2010 Census Population	31,080	87,147	200,775
Projected Annual Growth 2024 to 2029	-0.6%	-0.4%	-0.3%
Historical Annual Growth 2010 to 2024	0.6%	1.3%	1.2%
2024 Median Age	34.9	36.5	37.5
Households			
2024 Estimated Households	17,042	52,757	119,212
2029 Projected Households	16,752	52,415	118,962
2020 Census Households	17,390	51,890	116,329
2010 Census Households	15,128	42,076	97,099
Projected Annual Growth 2024 to 2029	-0.3%	-0.1%	-
Historical Annual Growth 2010 to 2024	0.9%	1.8%	1.6%
Race and Ethnicity			
2024 Estimated White	69.3%	70.5%	71.1%
2024 Estimated Black or African American	7.5%	7.0%	6.6%
2024 Estimated Asian or Pacific Islander	10.0%	9.8%	9.2%
2024 Estimated American Indian or Native Alaskan	0.5%	0.7%	0.7%
2024 Estimated Other Races	12.7%	12.1%	12.3%
2024 Estimated Hispanic	12.8%	11.9%	12.1%
Income			
2024 Estimated Average Household Income	\$139,398	\$129,497	\$134,694
2024 Estimated Median Household Income	\$101,323	\$97,325	\$99,231
2024 Estimated Per Capita Income	\$70,408	\$66,641	\$69,149
Education (Age 25+)			
2024 Estimated Elementary (Grade Level 0 to 8)	1.3%	1.4%	1.7%
2024 Estimated Some High School (Grade Level 9 to 11)	1.3%	2.1%	2.4%
2024 Estimated High School Graduate	9.6%	10.1%	11.0%
2024 Estimated Some College	15.7%	17.2%	16.4%
2024 Estimated Associates Degree Only	5.2%	5.6%	5.5%
2024 Estimated Bachelors Degree Only	40.8%	37.7%	35.6%
2024 Estimated Graduate Degree	26.1%	25.9%	27.5%
Business			
2024 Estimated Total Businesses	2,701	11,355	23,745
2024 Estimated Total Employees	14,733	96,387	207,435
2024 Estimated Employee Population per Business	5.5	8.5	8.7
2024 Estimated Residential Population per Business	12.5	9.1	9.8

For more information, please contact:

BOB LEFEBER 503.807.4174 | bob@cra-nw.com

SAM LEFEBER 503.866.1956 | sam@cra-nw.com



KNOWLEDGE

RELATIONSHIPS

EXPERIENCE



**COMMERCIAL
REALTY ADVISORS
NORTHWEST LLC**

Licensed brokers in Oregon & Washington

 15350 SW Sequoia Pkwy, Suite 198 • Portland, Oregon 97224



www.cra-nw.com



503.274.0211

The information herein has been obtained from sources we deem reliable. We do not, however, guarantee its accuracy. All information should be verified prior to purchase/leasing. View the Real Estate Agency Pamphlet by visiting our website, www.cra-nw.com/home/agency-disclosure.html. CRA PRINTS WITH 30% POST-CONSUMER, RECYCLED-CONTENT MATERIAL.