



CREATIVE RETAIL DISTRICT

# DESIGN CENTER



811 Design Center is home to a collection of local Portland designers and retailers including Something Cycles, Reifhaus, OURstore, Hedgerow Herb Co. and Coy & Co. Floral as well as other creative service businesses including film producers, graphic & print designers and local artists.

## ADDRESS

811 E Burnside Street | Portland, Oregon 97214

## AVAILABLE SPACE/RENTAL RATE

### SUITE 119 -

- 461 Rentable Square Feet
- \$1,350.00 gross rent, (additionally Tenant pays for its own internet).
- Landlord will paint floor and interior walls.
- Available now!

## TRAFFIC COUNTS

E Burnside St - 26,234 ADT ('25)

## HIGHLIGHTS

- Ground floor maker/retail and upper level office/studio space in the coveted 811 Design Center, Central Eastside's Portland creative design hub.
- In the heart of the burgeoning, close-in East Side Cultural / Restaurant / Creative Services / Retail and Office District, and close to the Burnside Bridgehead.
- Located across from the Jupiter Hotel and Le Pigeon in the heart of East Burnside's retail district.
- Cool, 60's vintage character and high-exposure building. East Burnside carries almost 20,000 cars per day and is well served by public transportation, including the streetcar line.
- Dense neighborhood with over 27,000 residents, and over 74,000 daytime employees within one mile.
- Less than 3/4 mile from the Central Business District with easy access to I-5 and I-84.



COMMERCIAL  
REALTY ADVISORS  
NORTHWEST LLC

**Kathleen Healy** 503.880.3033 | [kathleen@cra-nw.com](mailto:kathleen@cra-nw.com)  
**Ashley Heichelbech** 503.490.7212 | [ashley@cra-nw.com](mailto:ashley@cra-nw.com)

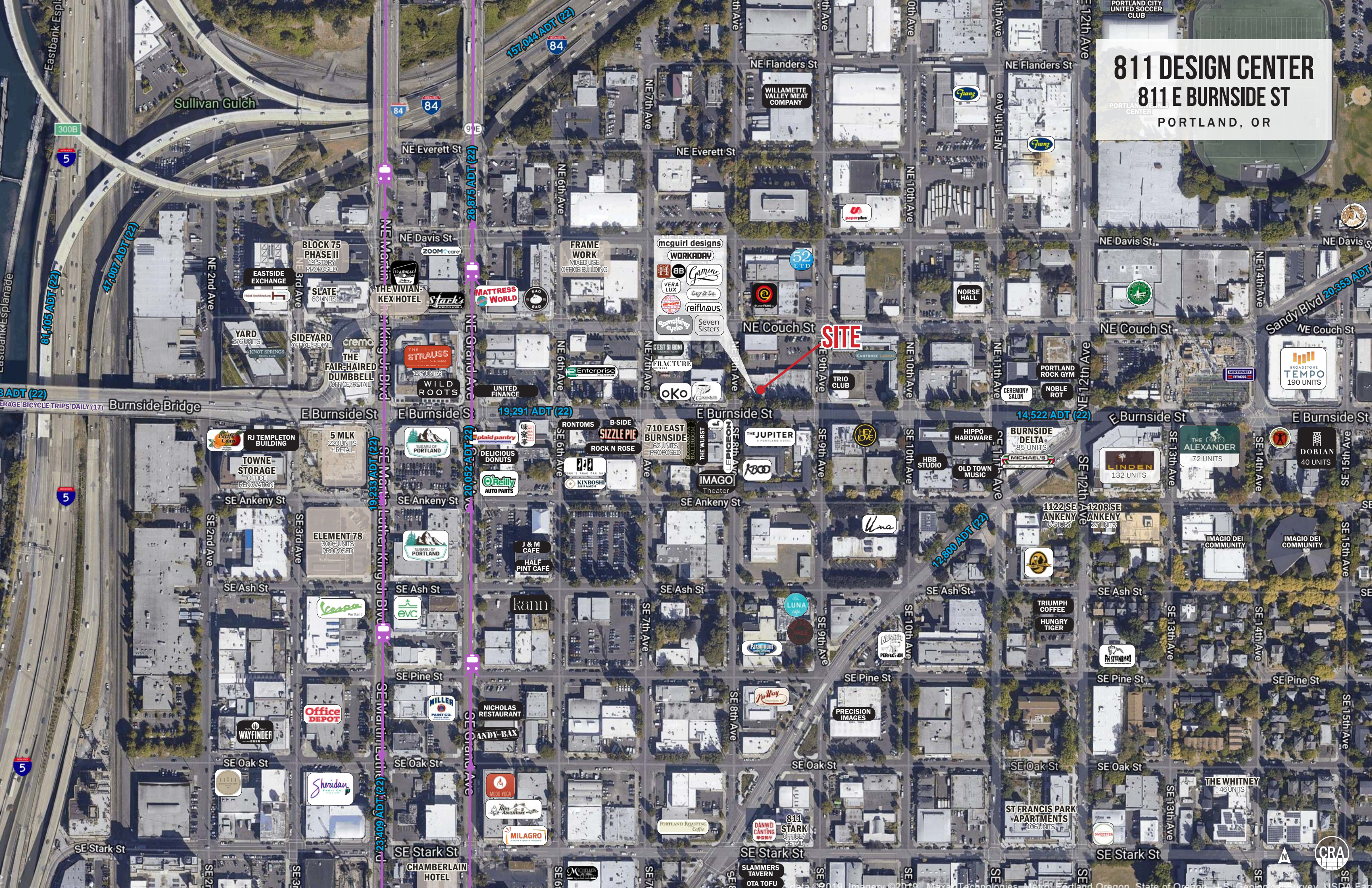
**503.274.0211**  
**[www.cra-nw.com](http://www.cra-nw.com)**



# 811 DESIGN CENTER

## 811 E BURNSIDE ST

PORTLAND, OR



mcguirl designs  
WORKADAY  
HBB  
VERA LUX  
reifhaus  
Seven Sisters

SITE

157,044 ADT (22)

300B

5

81,105 ADT (22)

47,007 ADT (22)

19,291 ADT (22)

20,052 ADT (22)

5

5

14,522 ADT (22)

12,800 ADT (22)

20,353 ADT

20,353 ADT

20,353 ADT

20,353 ADT

20,353 ADT

20,353 ADT

20,353 ADT

20,353 ADT

20,353 ADT

20,353 ADT

20,353 ADT

20,353 ADT

20,353 ADT

20,353 ADT

20,353 ADT

20,353 ADT

20,353 ADT

20,353 ADT

20,353 ADT

20,353 ADT

20,353 ADT

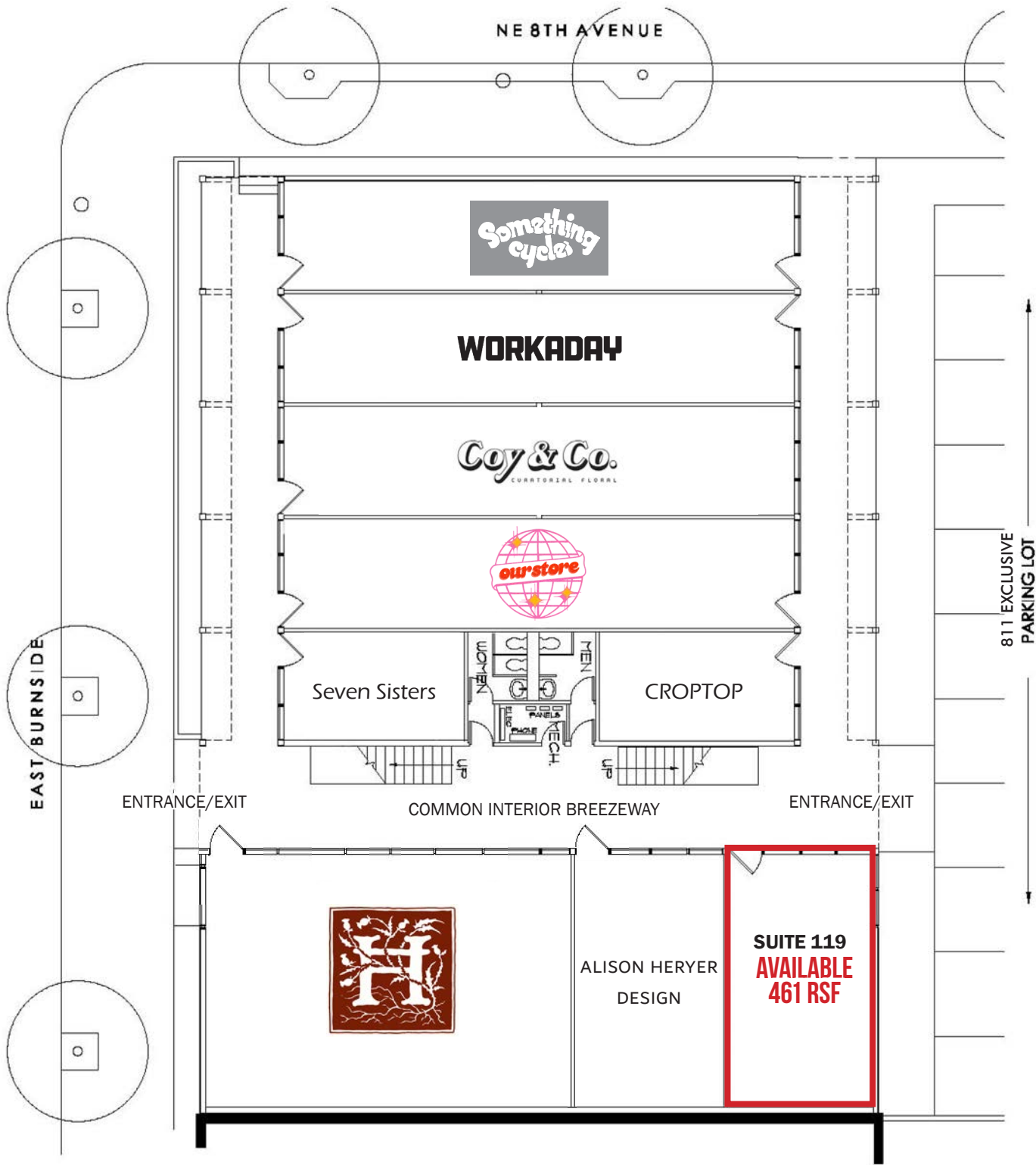
20,353 ADT

20,353 ADT



811 DESIGN CENTER  
811 E BURNSIDE ST  
PORTLAND, OR

GROUND FLOOR SITE PLAN



\*SCHEMATIC PLAN ONLY & NOT FOR LAYOUT PURPOSES  
RSF = RENTABLE SQUARE FEET

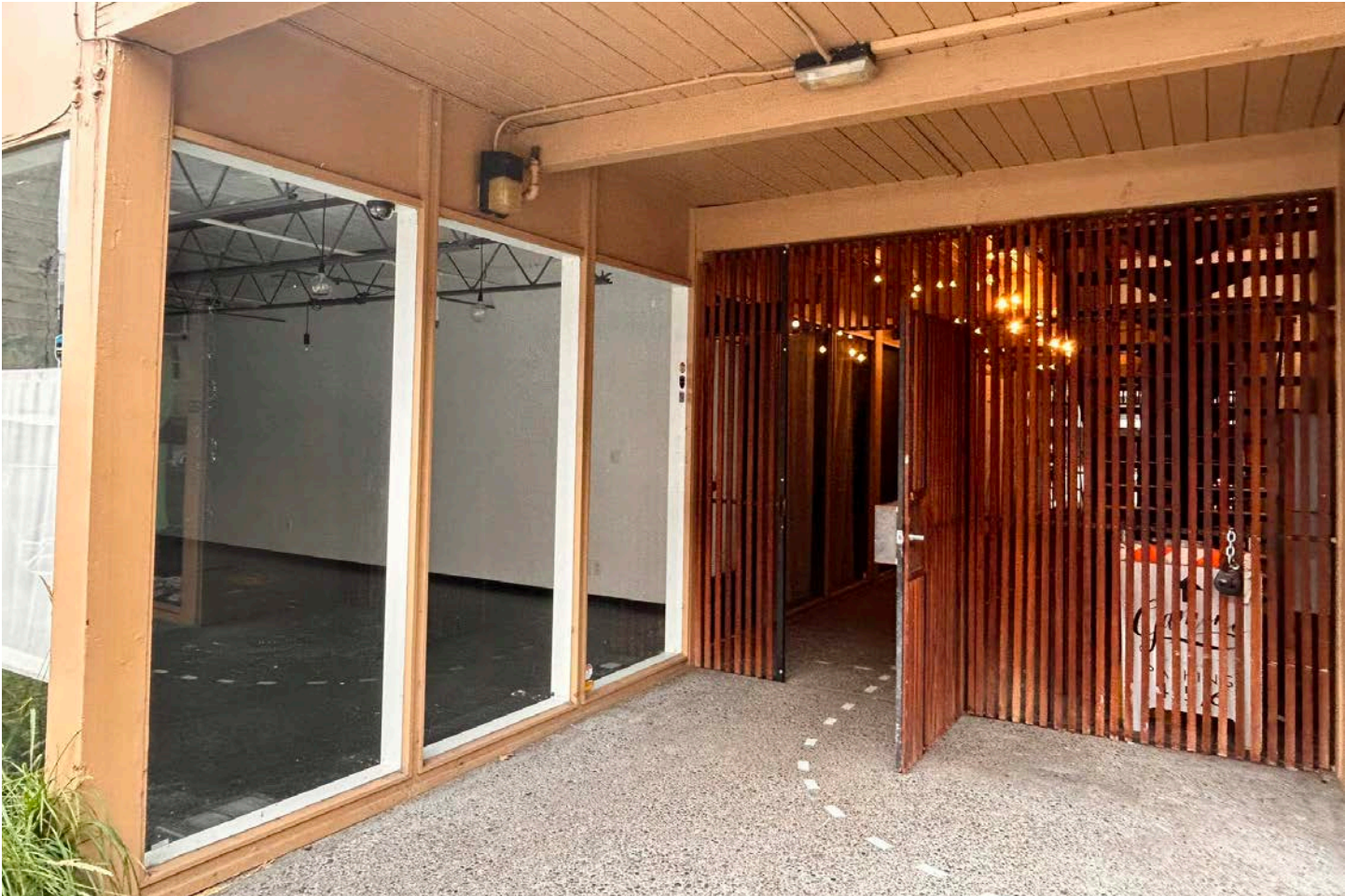
The information contained herein has been obtained from sources Commercial Realty Advisors NW LLC deems reliable. We have no reason to doubt its accuracy, but Commercial Realty Advisors NW LLC does not guarantee the information. The prospective buyer or tenant should carefully verify all information obtained herein.





**811 DESIGN CENTER**  
**811 E BURNSIDE ST**  
PORTLAND, OR

**IMAGES | SUITE 119**





811 DESIGN CENTER

811 E BURNSIDE ST

PORTLAND, OR

DEMOGRAPHIC SUMMARY

Source: Regis – SitesUSA (2025)	1 MILE	2 MILE	3 MILE
Estimated Population 2024	32,829	139,431	243,040
Estimated Households	16,707	74,534	124,234
Average HH Income	\$98,997	\$130,987	\$141,019
Median Home Value	\$642,600	\$695,848	\$695,125
Daytime Demographics 16+	68,624	214,112	290,676
Some College or Higher	78.2%	84.8%	85.5%

\$642,600

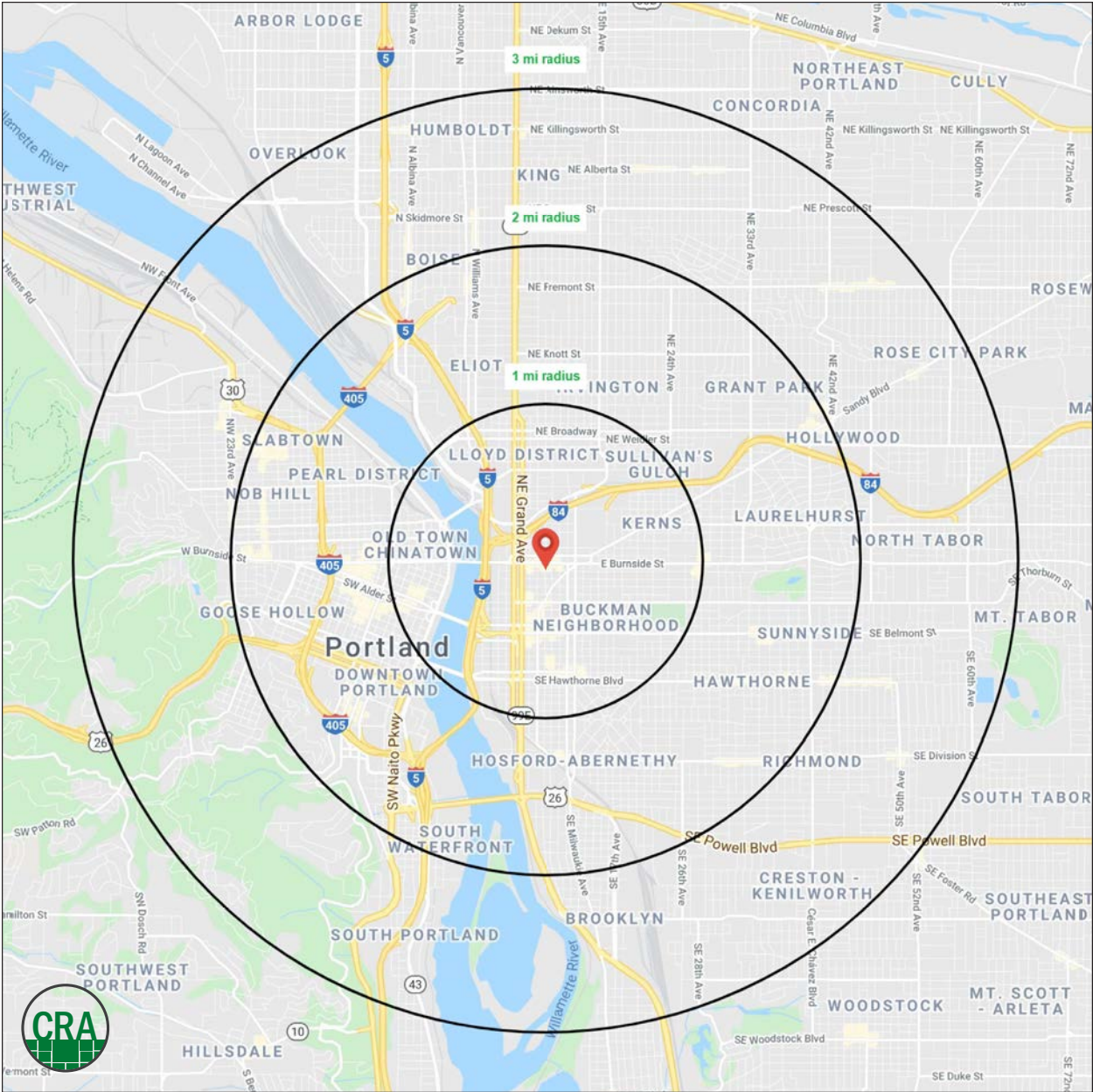
Median Home Value

1 MILE RADIUS

37.2

Median Age

1 MILE RADIUS





## Summary Profile

2010-2020 Census, 2024 Estimates with 2029 Projections  
Calculated using Weighted Block Centroid from Block Groups



Lat/Lon: 45.5232/-122.6574

811 E Burnside St Portland, OR 97214	1 mi radius	2 mi radius	3 mi radius
<b>Population</b>			
2024 Estimated Population	32,829	139,431	243,040
2029 Projected Population	32,162	138,458	239,831
2020 Census Population	27,448	127,231	233,633
2010 Census Population	20,051	102,024	194,209
Projected Annual Growth 2024 to 2029	-0.4%	-0.1%	-0.3%
Historical Annual Growth 2010 to 2024	4.6%	2.6%	1.8%
2024 Median Age	37.2	38.4	38.6
<b>Households</b>			
2024 Estimated Households	16,707	74,534	124,234
2029 Projected Households	17,010	75,155	123,850
2020 Census Households	16,137	70,225	119,019
2010 Census Households	11,196	54,440	96,539
Projected Annual Growth 2024 to 2029	0.4%	0.2%	-
Historical Annual Growth 2010 to 2024	3.5%	2.6%	2.0%
<b>Race and Ethnicity</b>			
2024 Estimated White	74.1%	74.9%	75.6%
2024 Estimated Black or African American	6.1%	5.4%	5.5%
2024 Estimated Asian or Pacific Islander	5.7%	7.2%	6.9%
2024 Estimated American Indian or Native Alaskan	1.2%	0.9%	0.7%
2024 Estimated Other Races	12.9%	11.7%	11.4%
2024 Estimated Hispanic	12.0%	10.4%	10.0%
<b>Income</b>			
2024 Estimated Average Household Income	\$98,997	\$130,987	\$141,019
2024 Estimated Median Household Income	\$70,833	\$94,294	\$103,397
2024 Estimated Per Capita Income	\$51,310	\$70,541	\$72,461
<b>Education (Age 25+)</b>			
2024 Estimated Elementary (Grade Level 0 to 8)	2.0%	1.7%	1.5%
2024 Estimated Some High School (Grade Level 9 to 11)	5.0%	2.4%	2.4%
2024 Estimated High School Graduate	14.9%	11.1%	10.5%
2024 Estimated Some College	19.6%	16.0%	15.8%
2024 Estimated Associates Degree Only	4.9%	5.5%	5.6%
2024 Estimated Bachelors Degree Only	33.1%	36.2%	37.1%
2024 Estimated Graduate Degree	20.5%	27.1%	27.0%
<b>Business</b>			
2024 Estimated Total Businesses	5,355	17,499	25,290
2024 Estimated Total Employees	58,405	174,148	225,541
2024 Estimated Employee Population per Business	10.9	10.0	8.9
2024 Estimated Residential Population per Business	6.1	8.0	9.6



*For more information, please contact:*

**ASHLEY HEICHELBECH** 503.490.7212 | [ashley@cra-nw.com](mailto:ashley@cra-nw.com)

**KATHLEEN HEALY** 503.880.3033 | [kathleen@cra-nw.com](mailto:kathleen@cra-nw.com)



KNOWLEDGE

RELATIONSHIPS

EXPERIENCE



**COMMERCIAL  
REALTY ADVISORS  
NORTHWEST LLC**

*Licensed brokers in Oregon & Washington*

 15350 SW Sequoia Parkway, Suite 198 • Portland, Oregon 97224



[www.cra-nw.com](http://www.cra-nw.com)



**503.274.0211**

The information herein has been obtained from sources we deem reliable. We do not, however, guarantee its accuracy. All information should be verified prior to purchase/leasing. View the Real Estate Agency Pamphlet by visiting our website, [www.cra-nw.com/home/agency-disclosure.html](http://www.cra-nw.com/home/agency-disclosure.html). CRA PRINTS WITH 30% POST-CONSUMER, RECYCLED-CONTENT MATERIAL.