

SE PORTLAND CHURCH

FOR SALE

5512 SE 73RD AVE, PORTLAND, OR

ADDRESS

5512 SE 73rd Ave, Portland, OR 97206

BUILDING SIZE

17,045 SF

ASKING PRICE

\$2,400,000

HIGHLIGHTS

- Beautiful church built in 1924
- Timeless craftsmanship with attention to details throughout
- Main sanctuary with balconies
- Multiple classrooms, offices, and gathering spaces
- Includes 22 parking spaces



COMMERCIAL
REALTY ADVISORS
NORTHWEST LLC

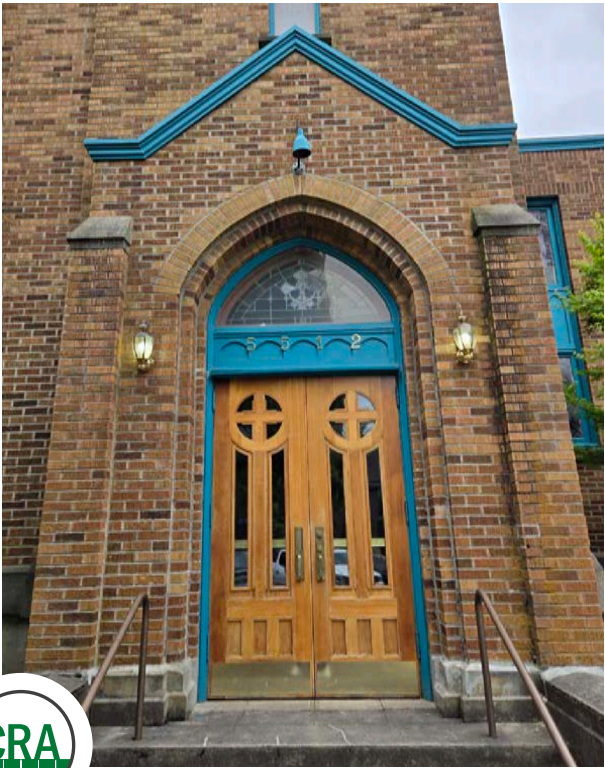
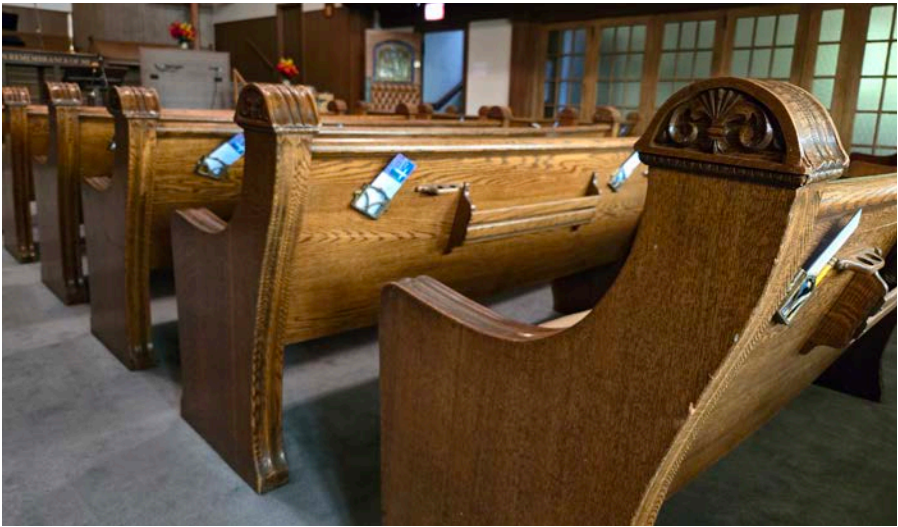
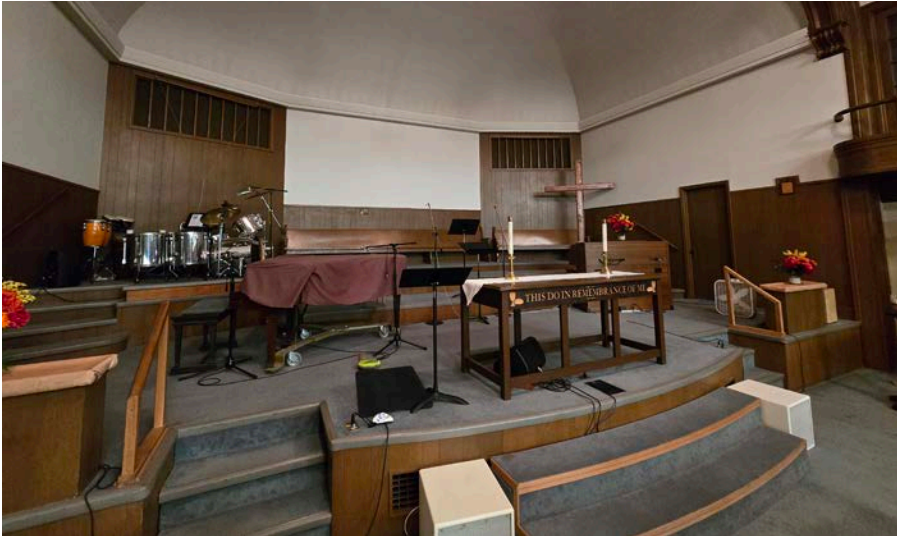
Bob LeFeber 503.807.4174 | bob@cra-nw.com
Sam LeFeber 503.866.1956 | sam@cra-nw.com

503.274.0211
www.cra-nw.com

The information herein has been obtained from sources we deem reliable. We do not, however, guarantee its accuracy. All information should be verified prior to purchase/leasing. View the Real Estate Agency Pamphlet by visiting our website, www.cra-nw.com/home/agency-disclosure.html. CRA PRINTS WITH 30% POST-CONSUMER, RECYCLED-CONTENT MATERIAL.

PHOTOS

SE PDX CHURCH
5512 SE 73RD AVE
PORTLAND, OR



SE PDX CHURCH
5512 SE 73RD AVE

PORTLAND, OR

SITE



SE PDX CHURCH
5512 SE 73RD AVE
PORTLAND, OR



SE Harold St

SE Harold St

SE 28th Avenue

SE 29th Avenue

SE 73rd Ave

SE 74th Ave

SE Ellis St

SE Ellis St

SE Ellis St

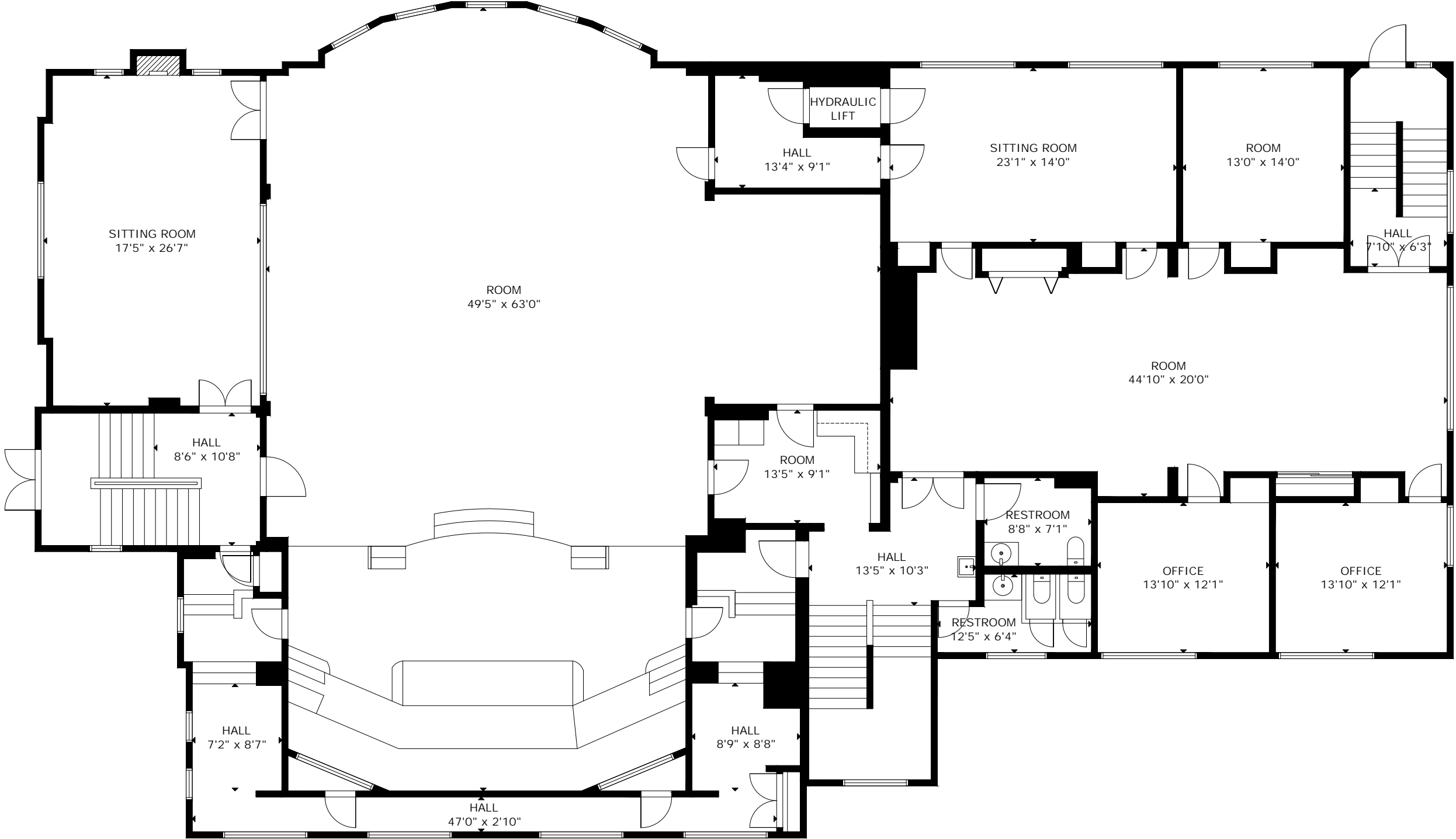
SE Stephens Street

SITE



FLOOR PLAN: MAIN LEVEL

SE PDX CHURCH
5512 SE 73RD AVE
PORTLAND, OR

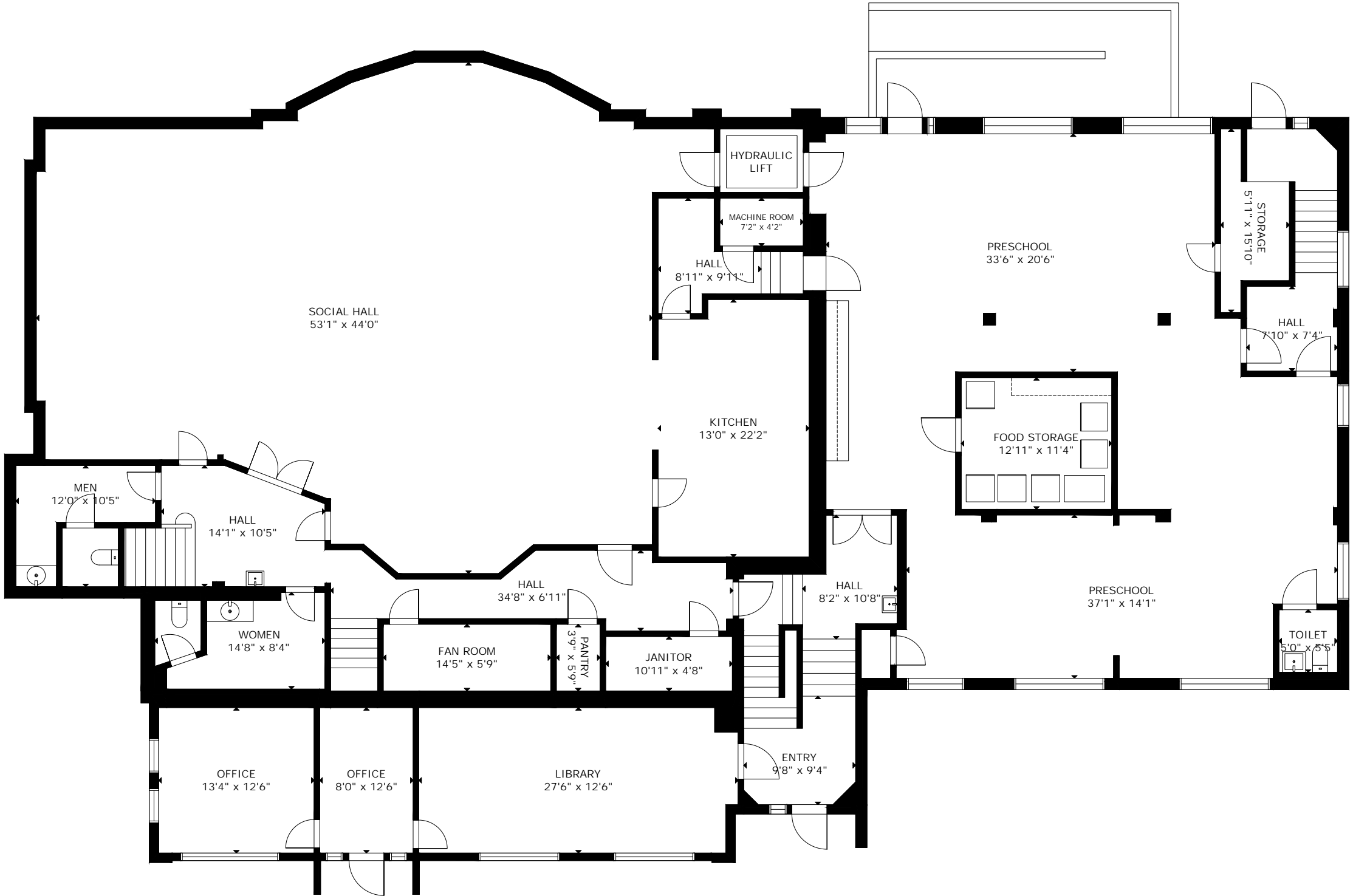


GROSS INTERNAL AREA
TOTAL: 17,045 sq ft
FLOOR 1: 6,186 sq ft, FLOOR 2: 6,097 sq ft, FLOOR 3: 4,762 sq ft
SIZE AND DIMENSIONS ARE APPROXIMATE, ACTUAL MAY VARY



FLOOR PLAN: LOWER LEVEL

SE PDX CHURCH
5512 SE 73RD AVE
PORTLAND, OR

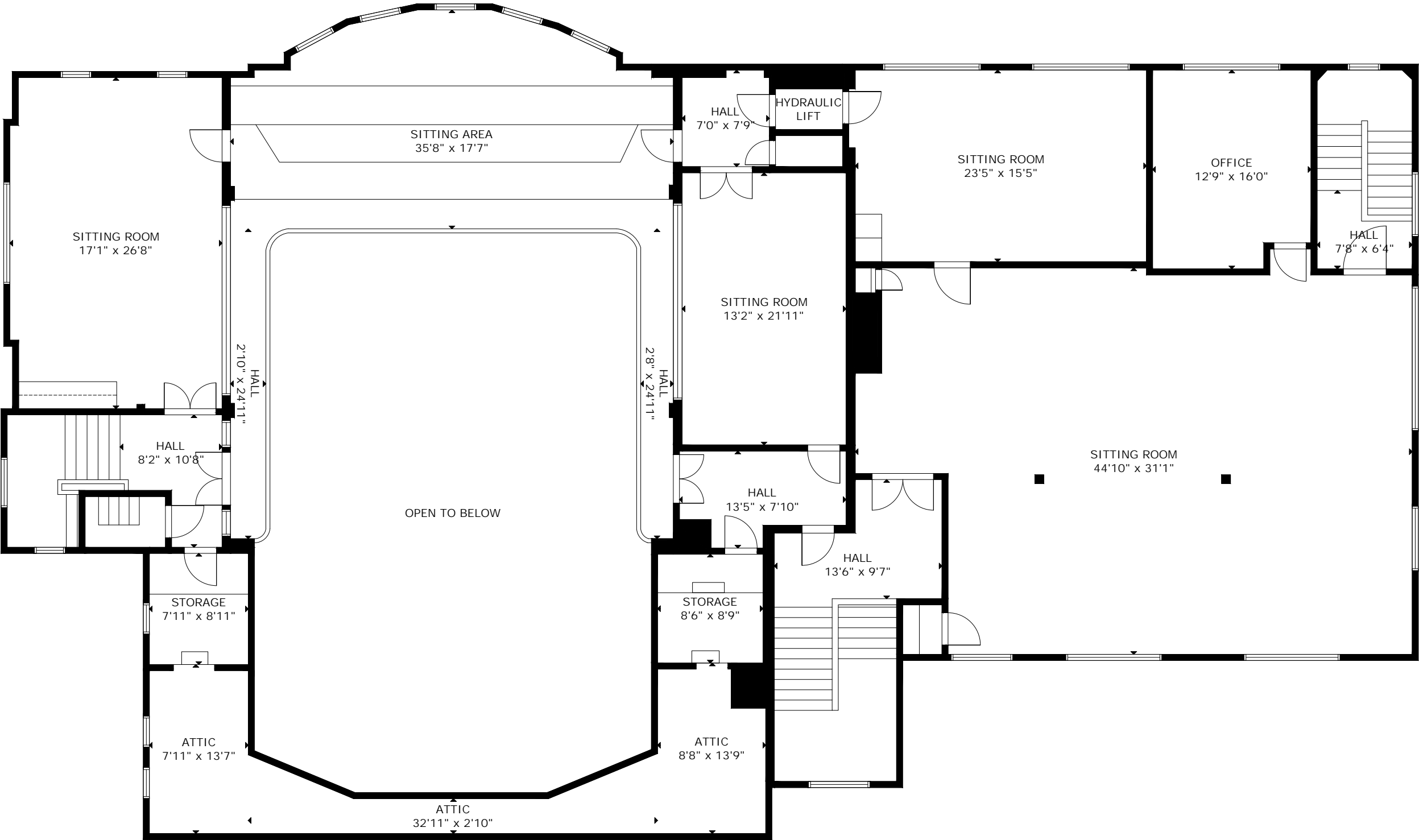


GROSS INTERNAL AREA
TOTAL: 17,045 sq ft
FLOOR 1: 6,186 sq ft, FLOOR 2: 6,097 sq ft, FLOOR 3: 4,762 sq ft
SIZE AND DIMENSIONS ARE APPROXIMATE, ACTUAL MAY VARY



The information contained herein has been obtained from sources Commercial Realty Advisors NW LLC deems reliable. We have no reason to doubt its accuracy, but Commercial Realty Advisors NW LLC does not guarantee the information. The prospective buyer or tenant should carefully verify all information obtained herein.

FLOOR PLAN: UPPER LEVEL



GROSS INTERNAL AREA
TOTAL: 17,045 sq ft
FLOOR 1: 6,186 sq ft, FLOOR 2: 6,097 sq ft, FLOOR 3: 4,762 sq ft
SIZE AND DIMENSIONS ARE APPROXIMATE, ACTUAL MAY VARY



SE PDX CHURCH

5512 SE 73RD AVE

PORTLAND, OR

DEMOGRAPHIC SUMMARY

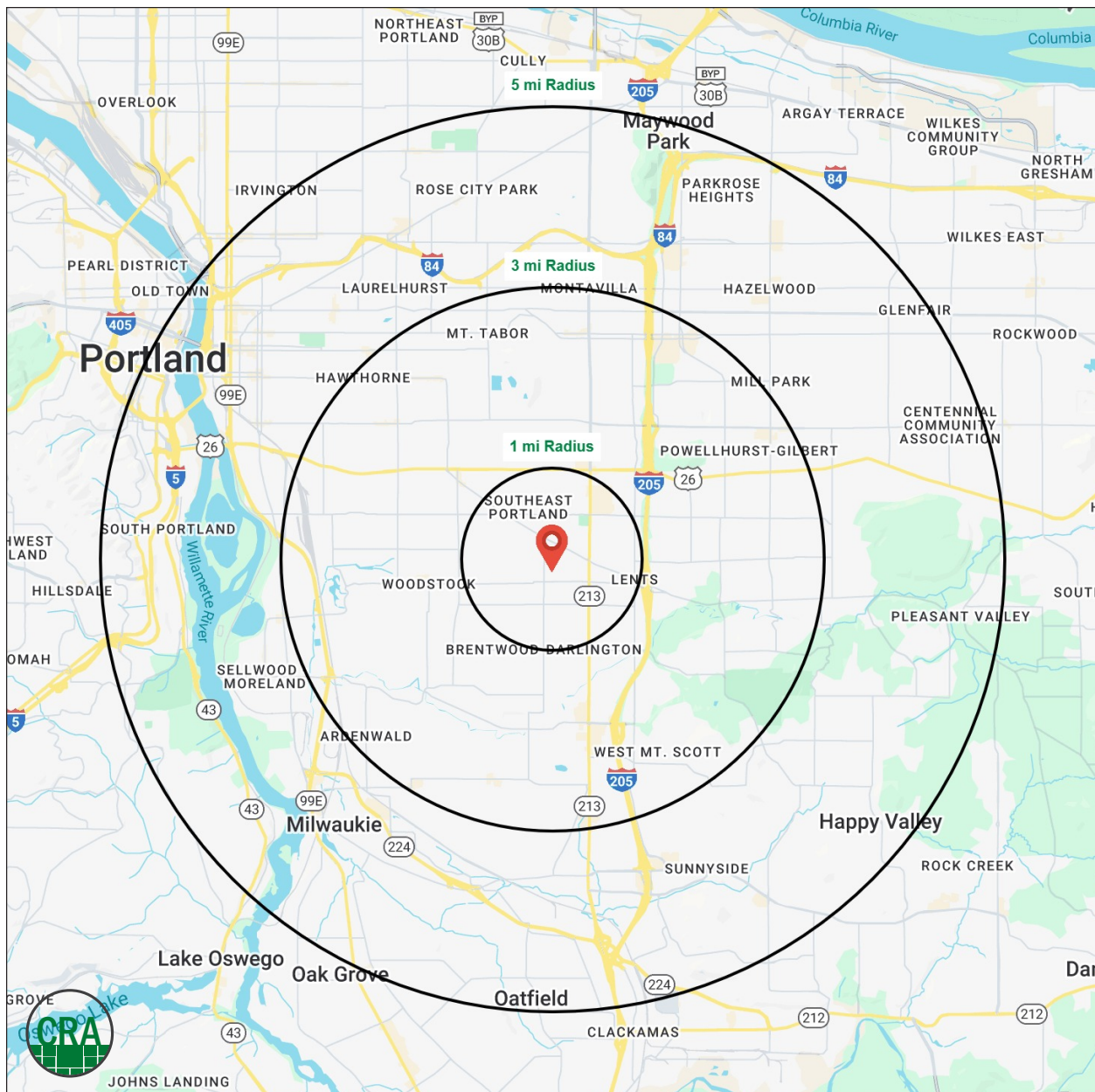
Source: Regis - SitesUSA (2025)	1 MILE	3 MILE	5 MILE
Estimated Population 2025	25,925	184,895	439,803
Estimated Households 2025	10,629	76,404	189,436
Average HH Income	\$113,730	\$125,131	\$125,665
Median Home Value	\$489,045	\$544,658	\$576,704
Daytime Demographics 16+	11,513	110,168	355,591
Some College or Higher	73.0%	74.4%	76.1%

\$113,730

Average Household Income
1 MILE RADIUS

37.4

Median Age
1 MILE RADIUS



Summary Profile

2010-2020 Census, 2025 Estimates with 2030 Projections
Calculated using Weighted Block Centroid from Block Groups



Lat/Lon: 45.4829/-122.5874

5512 SE 73rd Ave Portland, OR 97206	1 mi radius	3 mi radius	5 mi radius
Population			
2025 Estimated Population	25,925	184,895	439,803
2030 Projected Population	25,075	180,596	432,858
2020 Census Population	27,725	192,543	449,796
2010 Census Population	25,304	177,836	406,460
Projected Annual Growth 2025 to 2030	-0.7%	-0.5%	-0.3%
Historical Annual Growth 2010 to 2025	0.2%	0.3%	0.5%
2025 Median Age	37.4	38.2	38.7
Households			
2025 Estimated Households	10,629	76,404	189,436
2030 Projected Households	10,340	75,215	188,591
2020 Census Households	10,717	76,872	186,825
2010 Census Households	9,851	71,362	167,648
Projected Annual Growth 2025 to 2030	-0.5%	-0.3%	-
Historical Annual Growth 2010 to 2025	0.5%	0.5%	0.9%
Race and Ethnicity			
2025 Estimated White	67.7%	70.8%	71.8%
2025 Estimated Black or African American	4.4%	4.4%	4.9%
2025 Estimated Asian or Pacific Islander	13.6%	11.1%	10.1%
2025 Estimated American Indian or Native Alaskan	0.9%	0.8%	0.8%
2025 Estimated Other Races	13.4%	12.9%	12.4%
2025 Estimated Hispanic	12.6%	12.2%	11.8%
Income			
2025 Estimated Average Household Income	\$113,730	\$125,131	\$125,665
2025 Estimated Median Household Income	\$94,124	\$99,118	\$96,662
2025 Estimated Per Capita Income	\$46,790	\$51,986	\$54,414
Education (Age 25+)			
2025 Estimated Elementary (Grade Level 0 to 8)	4.1%	3.5%	3.1%
2025 Estimated Some High School (Grade Level 9 to 11)	3.8%	4.2%	3.9%
2025 Estimated High School Graduate	19.1%	17.9%	16.9%
2025 Estimated Some College	18.8%	19.1%	19.2%
2025 Estimated Associates Degree Only	7.7%	8.0%	7.9%
2025 Estimated Bachelors Degree Only	29.2%	29.7%	30.5%
2025 Estimated Graduate Degree	17.3%	17.5%	18.5%
Business			
2025 Estimated Total Businesses	1,127	9,097	29,304
2025 Estimated Total Employees	5,151	59,271	228,653
2025 Estimated Employee Population per Business	4.6	6.5	7.8
2025 Estimated Residential Population per Business	23.0	20.3	15.0

©2025, Sites USA, Chandler, Arizona, 480-491-1112 Demographic Source: Applied Geographic Solutions 5/2025, TIGER Geography - RS1

This report was produced using data from private and government sources deemed to be reliable. The information herein is provided without representation or warranty.

For more information, please contact:

BOB LEFEBER 503.807.4174 | bob@cra-nw.com

SAM LEFEBER 503.866.1956 | sam@cra-nw.com



KNOWLEDGE

RELATIONSHIPS

EXPERIENCE



**COMMERCIAL
REALTY ADVISORS
NORTHWEST LLC**

Licensed brokers in Oregon & Washington

📍 15350 SW Sequoia Pkwy, Suite 198 • Portland, Oregon 97224



www.cra-nw.com



503.274.0211

The information herein has been obtained from sources we deem reliable. We do not, however, guarantee its accuracy. All information should be verified prior to purchase/leasing. View the Real Estate Agency Pamphlet by visiting our website, www.cra-nw.com/home/agency-disclosure.html. CRA PRINTS WITH 30% POST-CONSUMER, RECYCLED-CONTENT MATERIAL.