

SE DIVISION STREET COMMISSARY KITCHEN



ADDRESS

1125 SE Division Street
Portland, OR 97202

AVAILABLE SPACE

- 1,876 SF

RENTAL RATE

\$3,000/month

TRAFFIC COUNTS

SE Division – 8,763 ADT ('25)



HIGHLIGHTS

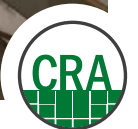
- Private entrance with roll-up door
- Kitchen includes walk-in cooler, large hood, dish hood, multiple sinks, ice cream cabinet, griddle, two vat fryer.
- Available now!



COMMISSARY KITCHEN

1125 SE DIVISION STREET
PORTLAND, OR

PHOTOS



COMMISSARY KITCHEN
1125 SE DIVISION STREET
PORTLAND, OR

SITE

ABERNETHY
ELEMENTARY
SCHOOL

ST PHILIP NERI PARISH

THE PAULIST
CENTER

NOSSA
FAMILIA
COFFEE

8,763 ADT ('25)

7,795 ADT ('25)

5,573 ADT ('25)

5,586 ADT ('25)

4,450 ADT ('25)

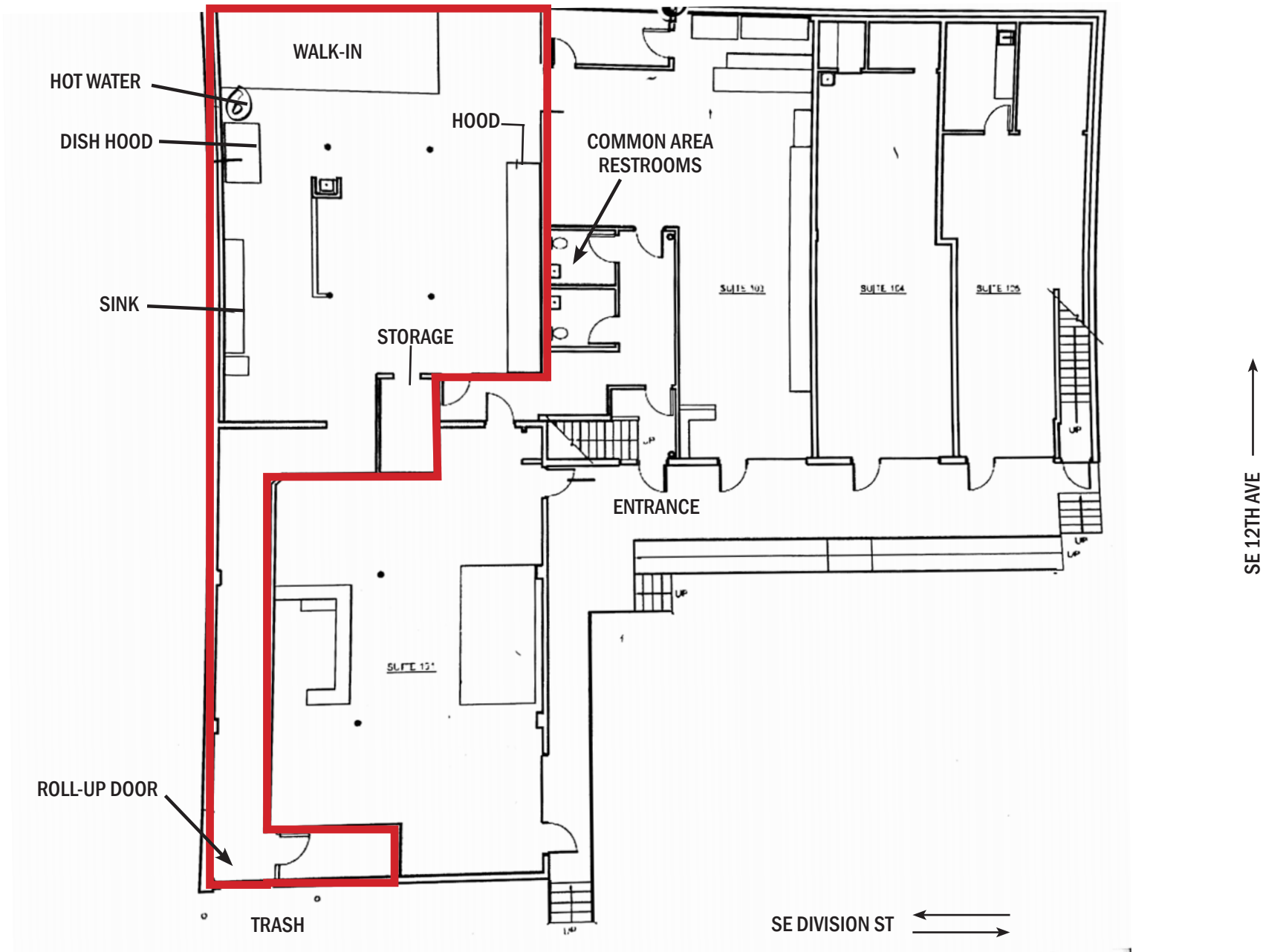
STUDIO 40
VIRTUOUS PIE

NEW SEASONS
MARKET



FLOOR PLAN

COMMISSARY KITCHEN
1125 SE DIVISION STREET
PORTLAND, OR



COMMISSARY KITCHEN

1125 SE DIVISION STREET

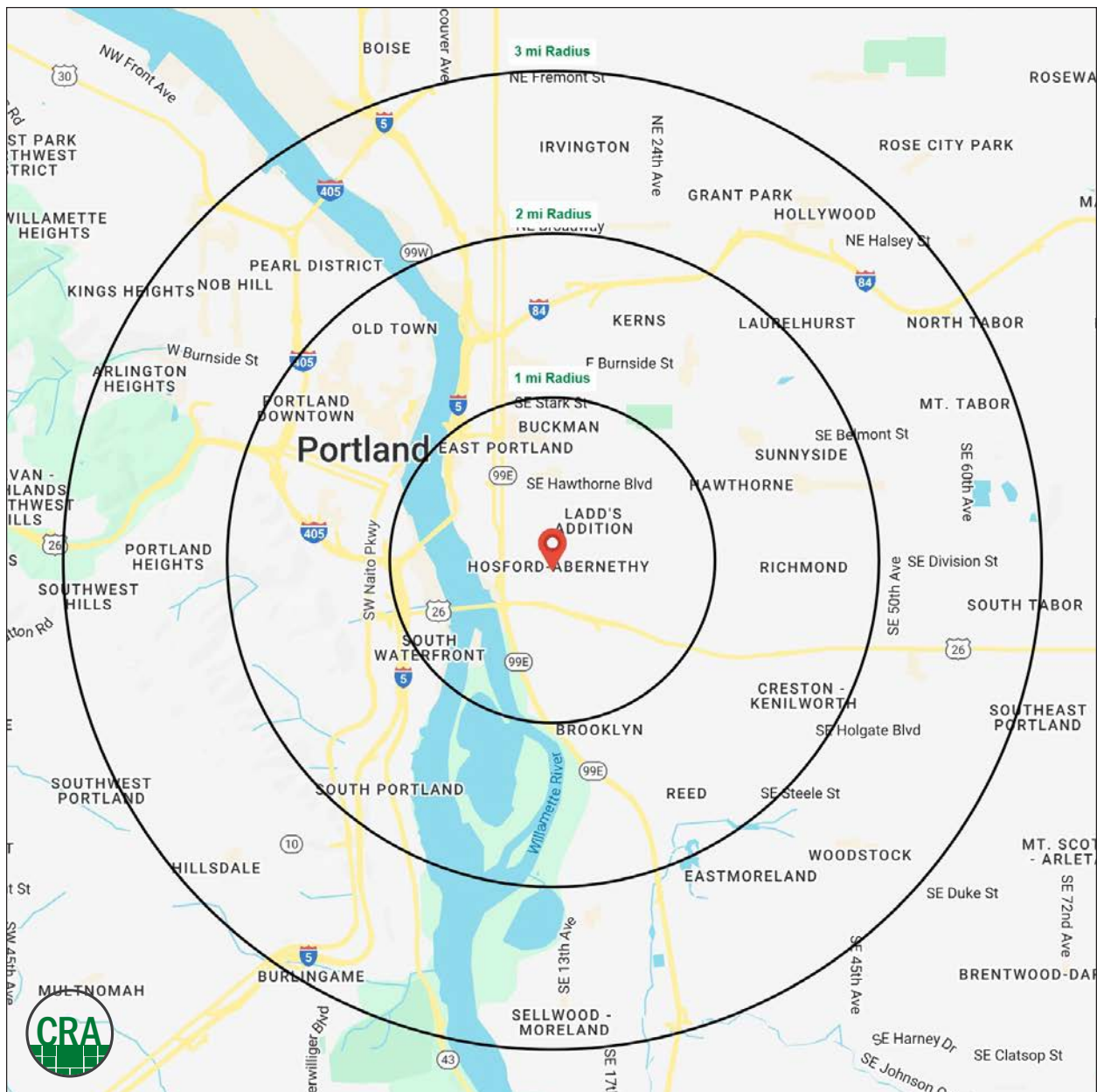
PORTLAND, OR

DEMOGRAPHIC SUMMARY

Source: Regis - SitesUSA (2025)	1 MILE	2 MILE	3 MILE
Estimated Population 2024	21,211	114,751	229,521
Estimated Households	11,274	58,622	117,488
Average HH Income	\$129,953	\$118,671	\$137,967
Median Home Value	\$685,666	\$645,194	\$685,055
Daytime Demographics 16+	26,917	180,637	278,260
Some College or Higher	85.6%	83.9%	85.7%

\$129,953
Average Household Income
1 MILE RADIUS

37.1
Median Age
1 MILE RADIUS



Summary Profile

2010-2020 Census, 2024 Estimates with 2029 Projections
Calculated using Weighted Block Centroid from Block Groups



Lat/Lon: 45.5052/-122.6541

1125 SE Division St Portland, OR 97202	1 mi radius	2 mi radius	3 mi radius
Population			
2024 Estimated Population	21,211	114,751	229,521
2029 Projected Population	21,569	113,524	226,081
2020 Census Population	20,852	103,282	219,221
2010 Census Population	17,376	85,915	183,840
Projected Annual Growth 2024 to 2029	0.3%	-0.2%	-0.3%
Historical Annual Growth 2010 to 2024	1.6%	2.4%	1.8%
2024 Median Age	37.1	38.1	39.0
Households			
2024 Estimated Households	11,274	58,622	117,488
2029 Projected Households	11,565	58,877	116,963
2020 Census Households	10,611	55,557	112,869
2010 Census Households	8,799	44,394	92,089
Projected Annual Growth 2024 to 2029	0.5%	-	-
Historical Annual Growth 2010 to 2024	2.0%	2.3%	2.0%
Race and Ethnicity			
2024 Estimated White	78.3%	75.1%	76.8%
2024 Estimated Black or African American	3.3%	4.5%	4.1%
2024 Estimated Asian or Pacific Islander	6.0%	7.6%	7.2%
2024 Estimated American Indian or Native Alaskan	0.9%	0.9%	0.7%
2024 Estimated Other Races	11.4%	12.0%	11.2%
2024 Estimated Hispanic	10.0%	10.6%	9.9%
Income			
2024 Estimated Average Household Income	\$129,953	\$118,671	\$137,967
2024 Estimated Median Household Income	\$98,552	\$88,683	\$102,254
2024 Estimated Per Capita Income	\$69,481	\$61,192	\$71,026
Education (Age 25+)			
2024 Estimated Elementary (Grade Level 0 to 8)	1.5%	2.1%	1.6%
2024 Estimated Some High School (Grade Level 9 to 11)	1.9%	2.8%	2.2%
2024 Estimated High School Graduate	11.0%	11.3%	10.5%
2024 Estimated Some College	17.8%	17.8%	15.8%
2024 Estimated Associates Degree Only	5.8%	5.9%	5.7%
2024 Estimated Bachelors Degree Only	37.0%	35.1%	36.8%
2024 Estimated Graduate Degree	25.0%	25.0%	27.5%
Business			
2024 Estimated Total Businesses	2,935	14,361	24,089
2024 Estimated Total Employees	21,655	146,216	213,777
2024 Estimated Employee Population per Business	7.4	10.2	8.9
2024 Estimated Residential Population per Business	7.2	8.0	9.5

©2025, Sites USA, Chandler, Arizona, 480-491-1112 Demographic Source: Applied Geographic Solutions 11/2024, TIGER Geography - RS1

This report was produced using data from private and government sources deemed to be reliable. The information herein is provided without representation or warranty.

For more information, please contact:

SAM LEFEBER 503.866.1956 | sam@cra-nw.com



KNOWLEDGE

RELATIONSHIPS

EXPERIENCE



**COMMERCIAL
REALTY ADVISORS
NORTHWEST LLC**

Licensed brokers in Oregon & Washington

 15350 SW Sequoia Parkway, Suite 198 • Portland, Oregon 97224



www.cra-nw.com



503.274.0211

The information herein has been obtained from sources we deem reliable. We do not, however, guarantee its accuracy. All information should be verified prior to purchase/leasing. View the Real Estate Agency Pamphlet by visiting our website, www.cra-nw.com/home/agency-disclosure.html. CRA PRINTS WITH 30% POST-CONSUMER, RECYCLED-CONTENT MATERIAL.