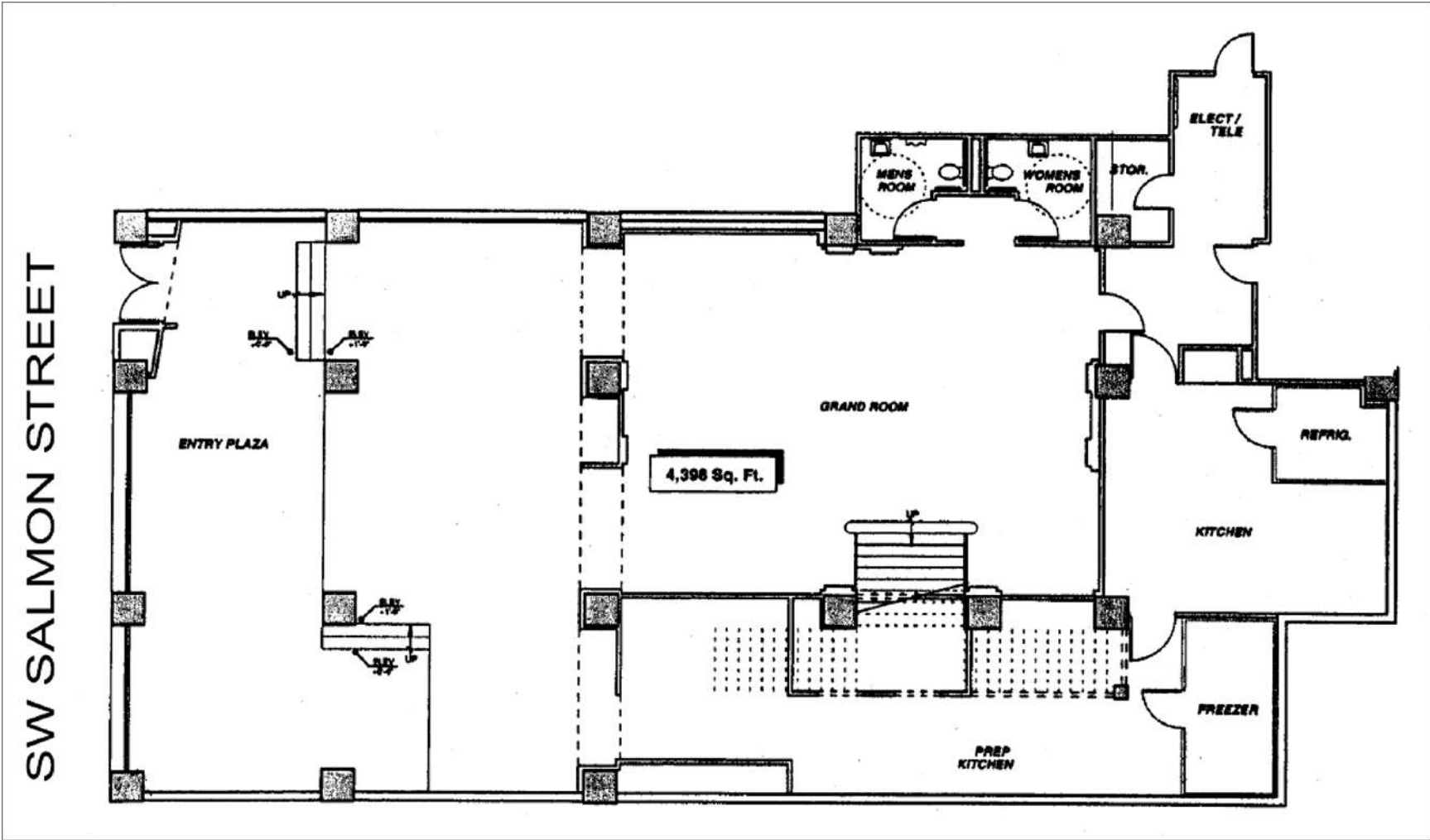




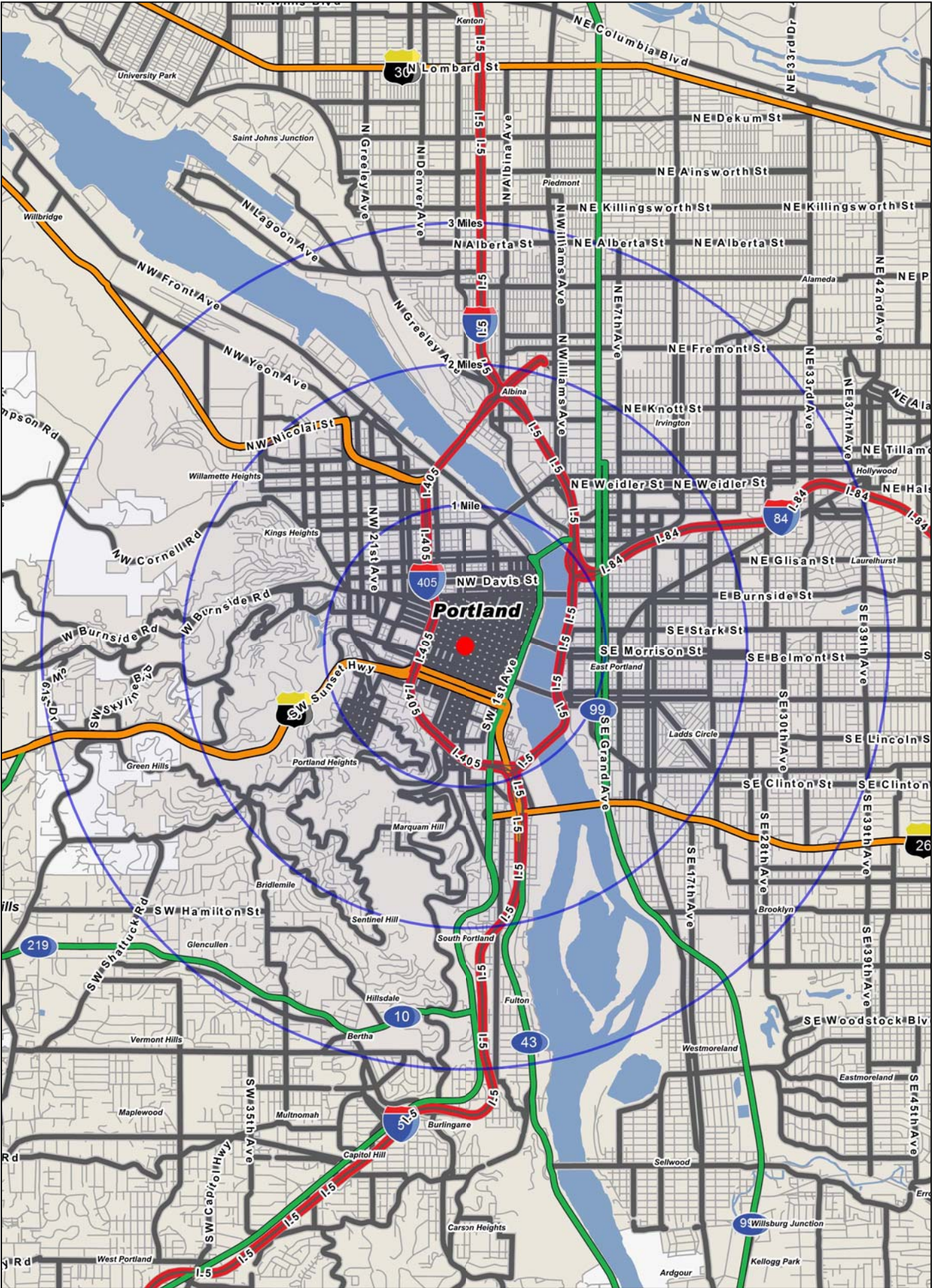
Park Tower Restaurant Opportunity, Portland, Oregon



723-737 SW Salmon St - Park Tower Retail



Logos are for identification purposes only and may be trademarks of their respective companies.



FULL PROFILE

1990 - 2000 Census, 2010 Estimates with 2015 Projections
 Calculated using Proportional Block Groups



Lat/Lon: 45.51774/-122.6813

723 Sw Salmon St

Portland, OR

		1 Mile	2 Miles	3 Miles
POPULATION	2010 Estimated Population	30,358	70,864	145,538
	2015 Projected Population	36,454	81,869	161,581
	2000 Census Population	25,430	60,809	131,233
	1990 Census Population	21,140	54,526	123,114
	Historical Annual Growth 1990 to 2010	2.2%	1.5%	0.9%
	Projected Annual Growth 2010 to 2015	4.0%	3.1%	2.2%
HOUSEHOLDS	2010 Est. Households	19,330	41,365	73,942
	2015 Proj. Households	22,558	46,437	79,753
	2000 Census Households	16,138	35,411	66,690
	1990 Census Households	13,394	31,022	60,563
	Historical Annual Growth 1990 to 2010	2.2%	1.7%	1.1%
	Projected Annual Growth 2010 to 2015	3.3%	2.5%	1.6%
AGE	2010 Est. Population 0 to 9 Years	3.7%	6.0%	8.7%
	2010 Est. Population 10 to 19 Years	5.9%	6.6%	8.4%
	2010 Est. Population 20 to 29 Years	23.1%	20.4%	17.0%
	2010 Est. Population 30 to 44 Years	26.1%	25.8%	25.5%
	2010 Est. Population 45 to 59 Years	23.6%	23.6%	23.9%
	2010 Est. Population 60 to 74 Years	13.5%	12.4%	11.8%
	2010 Est. Population 75 Years Plus	4.1%	5.3%	4.8%
	2010 Est. Median Age	38.6	38.8	38.3
MARITAL STATUS & SEX	2010 Est. Male Population	58.1%	53.5%	51.1%
	2010 Est. Female Population	41.9%	46.5%	48.9%
	2010 Est. Never Married	53.7%	49.6%	44.8%
	2010 Est. Now Married	15.8%	24.1%	31.0%
	2010 Est. Separated or Divorced	25.9%	21.4%	19.4%
	2010 Est. Widowed	4.5%	4.9%	4.8%
INCOME	2010 Est. HH Income \$200,000 or More	3.5%	4.9%	5.0%
	2010 Est. HH Income \$150,000 to \$199,999	2.6%	4.8%	5.0%
	2010 Est. HH Income \$100,000 to \$149,999	7.8%	10.0%	11.6%
	2010 Est. HH Income \$75,000 to \$99,999	6.9%	7.6%	9.4%
	2010 Est. HH Income \$50,000 to \$74,999	8.8%	11.2%	13.6%
	2010 Est. HH Income \$35,000 to \$49,999	10.2%	11.3%	12.5%
	2010 Est. HH Income \$25,000 to \$34,999	10.1%	10.8%	11.1%
	2010 Est. HH Income \$15,000 to \$24,999	15.8%	13.4%	11.7%
	2010 Est. HH Income \$0 to \$14,999	34.3%	26.0%	20.1%
	2010 Est. Average Household Income	\$54,413	\$67,778	\$73,654
	2010 Est. Median HH Income	\$32,545	\$45,033	\$51,815
	2010 Est. Per Capita Income	\$38,167	\$41,852	\$38,915
	2010 Est. Number of Businesses	6,947	12,731	16,656
2010 Est. Total Number of Employees	101,622	206,697	250,316	

This report was produced using data from private and government sources deemed to be reliable. The information herein is provided without representation or warranty.

FULL PROFILE

1990 - 2000 Census, 2010 Estimates with 2015 Projections
 Calculated using Proportional Block Groups



Lat/Lon: 45.51774/-122.6813

723 Sw Salmon St

Portland, OR

		1 Mile	2 Miles	3 Miles
RACE	2010 Est. White Population	84.5%	86.1%	83.7%
	2010 Est. Black Population	5.3%	5.4%	8.2%
	2010 Est. Asian & Pacific Islander	6.6%	5.3%	4.8%
	2010 Est. American Indian & Alaska Native	1.6%	1.3%	1.1%
	2010 Est. Other Races Population	2.1%	2.0%	2.2%
HISPANIC	2010 Est. Hispanic Population	2,320	4,909	11,207
	2010 Est. Hispanic Population Percent	7.6%	6.9%	7.7%
	2015 Proj. Hispanic Population Percent	8.7%	8.0%	8.9%
	2000 Hispanic Population Percent			
EDUCATION (Adults 25 or Older)	2010 Est. Adult Population (25 Years or Older)	23,968	55,474	109,813
	2010 Est. Elementary (0 to 8)	3.2%	2.6%	2.9%
	2010 Est. Some High School (9 to 11)	4.6%	3.8%	3.9%
	2010 Est. High School Graduate (12)	16.4%	13.7%	13.8%
	2010 Est. Some College (13 to 16)	20.6%	19.2%	19.5%
	2010 Est. Associate Degree Only	5.9%	5.5%	5.7%
	2010 Est. Bachelor Degree Only	30.4%	32.1%	31.5%
	2010 Est. Graduate Degree	18.9%	23.2%	22.7%
HOUSING	2010 Est. Total Housing Units	21,624	45,672	80,150
	2010 Est. Owner Occupied Percent	13.9%	24.0%	36.7%
	2010 Est. Renter Occupied Percent	75.5%	66.5%	55.6%
	2010 Est. Vacant Housing Percent	10.6%	9.4%	7.7%
HOMES BUILT BY YEAR	2000 Homes Built 1999 to 2000	4.1%	3.2%	2.0%
	2000 Homes Built 1995 to 1998	6.9%	5.9%	4.5%
	2000 Homes Built 1990 to 1994	4.4%	3.7%	2.9%
	2000 Homes Built 1980 to 1989	7.5%	6.1%	4.9%
	2000 Homes Built 1970 to 1979	8.6%	9.8%	9.3%
	2000 Homes Built 1960 to 1969	8.3%	9.6%	9.0%
	2000 Homes Built 1950 to 1959	8.3%	8.1%	9.2%
	2000 Homes Built Before 1949	51.7%	53.7%	58.1%
HOME VALUES	2000 Home Value \$1,000,000 or More	8.7%	2.9%	1.3%
	2000 Home Value \$500,000 to \$999,999	28.1%	17.2%	7.4%
	2000 Home Value \$400,000 to \$499,999	15.0%	12.0%	6.7%
	2000 Home Value \$300,000 to \$399,999	14.2%	17.0%	13.2%
	2000 Home Value \$200,000 to \$299,999	15.9%	23.6%	28.4%
	2000 Home Value \$150,000 to \$199,999	13.4%	16.2%	22.1%
	2000 Home Value \$100,000 to \$149,999	1.5%	8.2%	15.8%
	2000 Home Value \$50,000 to \$99,999	3.0%	2.6%	4.4%
	2000 Home Value \$25,000 to \$49,999	0.1%	0.3%	0.5%
	2000 Home Value \$0 to \$24,999	-	-	0.2%
	2000 Median Home Value	\$447,362	\$338,583	\$253,967
	2000 Median Rent	\$501	\$541	\$551

This report was produced using data from private and government sources deemed to be reliable. The information herein is provided without representation or warranty.

FULL PROFILE

1990 - 2000 Census, 2010 Estimates with 2015 Projections
 Calculated using Proportional Block Groups



Lat/Lon: 45.51774/-122.6813

723 Sw Salmon St

Portland, OR

	1 Mile	2 Miles	3 Miles	
LABOR FORCE	2010 Est. Labor: Population Age 16+	28,718	64,472	125,891
	2010 Est. Civilian Employed	56.5%	61.2%	63.1%
	2010 Est. Civilian Unemployed	12.8%	10.3%	8.9%
	2010 Est. in Armed Forces	-	-	-
	2010 Est. not in Labor Force	30.7%	28.5%	27.9%
	2010 Labor Force: Males	58.4%	53.7%	51.2%
	2010 Labor Force: Females	41.6%	46.3%	48.8%
OCCUPATION	2000 Occupation: Population Age 16+	14,302	36,173	76,827
	2000 Mgmt, Business, & Financial Operations	15.8%	16.2%	16.6%
	2000 Professional & Related	30.5%	32.5%	32.1%
	2000 Service	16.2%	14.4%	13.5%
	2000 Sales and Office	27.7%	26.3%	25.4%
	2000 Farming, Fishing, and Forestry	0.1%	0.2%	0.2%
	2000 Construction, Extraction, & Maintenance	2.9%	3.1%	3.8%
	2000 Production, Transport, & Material Moving	6.8%	7.4%	8.3%
	2000 Percent White Collar Workers	74.0%	75.0%	74.1%
2000 Percent Blue Collar Workers	26.0%	25.0%	25.9%	
TRANSPORTATION TO WORK	2000 Drive to Work Alone	36.3%	46.5%	53.9%
	2000 Drive to Work in Carpool	4.7%	6.7%	8.6%
	2000 Travel to Work by Public Transportation	20.8%	18.6%	16.8%
	2000 Drive to Work on Motorcycle	0.1%	0.3%	0.2%
	2000 Walk or Bicycle to Work	33.1%	22.6%	14.8%
	2000 Other Means	1.0%	0.7%	0.6%
	2000 Work at Home	4.0%	4.7%	5.0%
TRAVEL TIME	2000 Travel to Work in 14 Minutes or Less	38.1%	36.3%	31.9%
	2000 Travel to Work in 15 to 29 Minutes	40.3%	42.9%	45.7%
	2000 Travel to Work in 30 to 59 Minutes	15.5%	16.0%	17.8%
	2000 Travel to Work in 60 Minutes or More	6.0%	4.8%	4.5%
	2000 Average Travel Time to Work	19.9	19.2	19.6
CONSUMER EXPENDITURE	2010 Est. Total Household Expenditure	\$879 M	\$2.18 B	\$4.13 B
	2010 Est. Apparel	\$42.4 M	\$105 M	\$199 M
	2010 Est. Contributions & Gifts	\$56.7 M	\$147 M	\$278 M
	2010 Est. Education & Reading	\$26.6 M	\$66.5 M	\$123 M
	2010 Est. Entertainment	\$48.0 M	\$120 M	\$230 M
	2010 Est. Food, Beverages & Tobacco	\$143 M	\$346 M	\$654 M
	2010 Est. Furnishings & Equipment	\$37.4 M	\$94.9 M	\$182 M
	2010 Est. Health Care & Insurance	\$64.6 M	\$157 M	\$295 M
	2010 Est. Household Operations & Shelter & Utilities	\$266 M	\$657 M	\$1.24 B
	2010 Est. Miscellaneous Expenses	\$15.2 M	\$36.9 M	\$69.4 M
	2010 Est. Personal Care	\$13.0 M	\$31.8 M	\$60.1 M
2010 Est. Transportation	\$166 M	\$414 M	\$798 M	

This report was produced using data from private and government sources deemed to be reliable. The information herein is provided without representation or warranty.