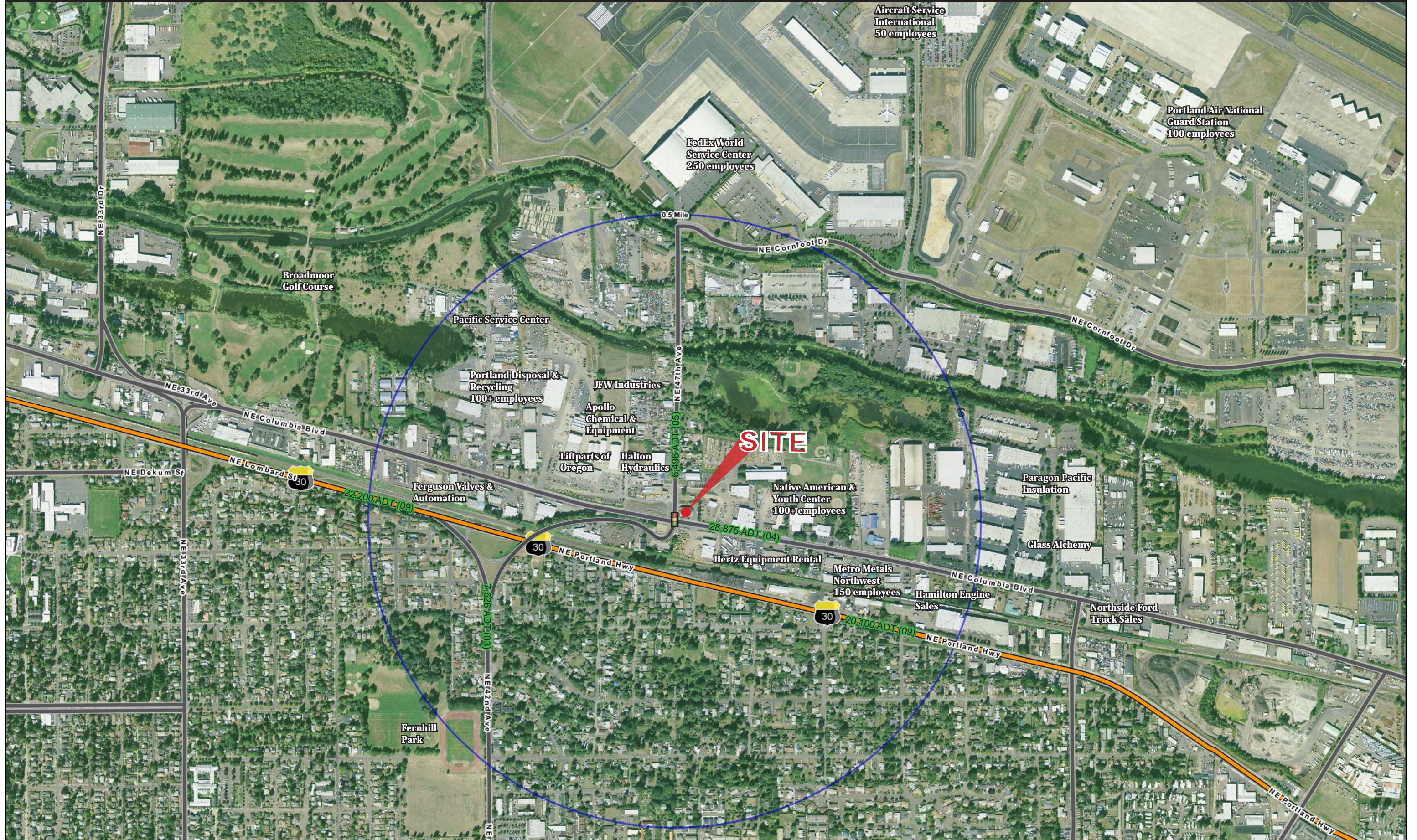
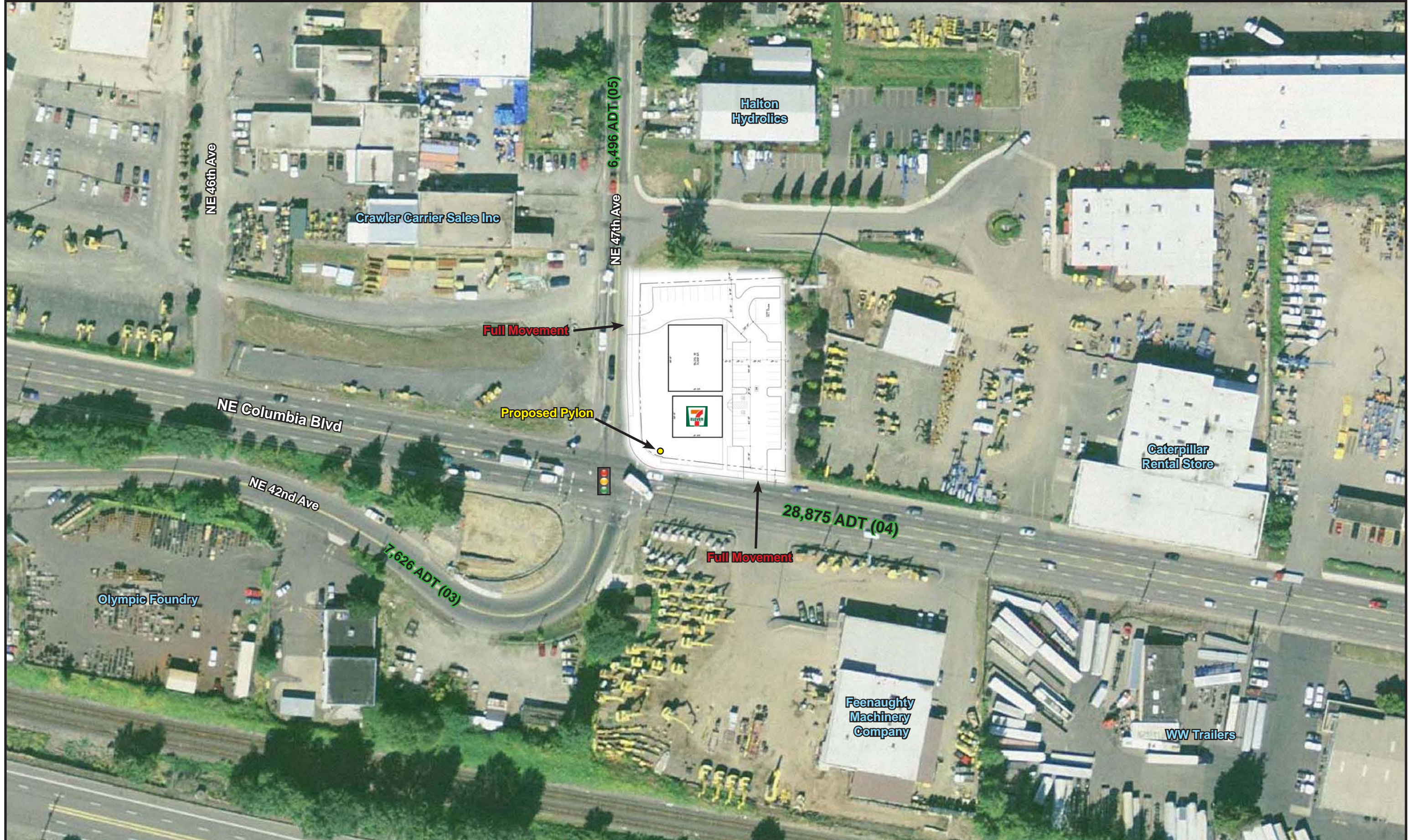


Area Employers – NE 47th & Columbia Blvd



Site Access – NE 47th & Columbia Blvd



NE 46th Ave

Crawler Carrier Sales Inc

Halton Hydraulics

NE 47th Ave 6,496 ADT (05)

Full Movement

Proposed Pylon

NE Columbia Blvd

NE 42nd Ave

7,626 ADT (03)

Olympic Foundry

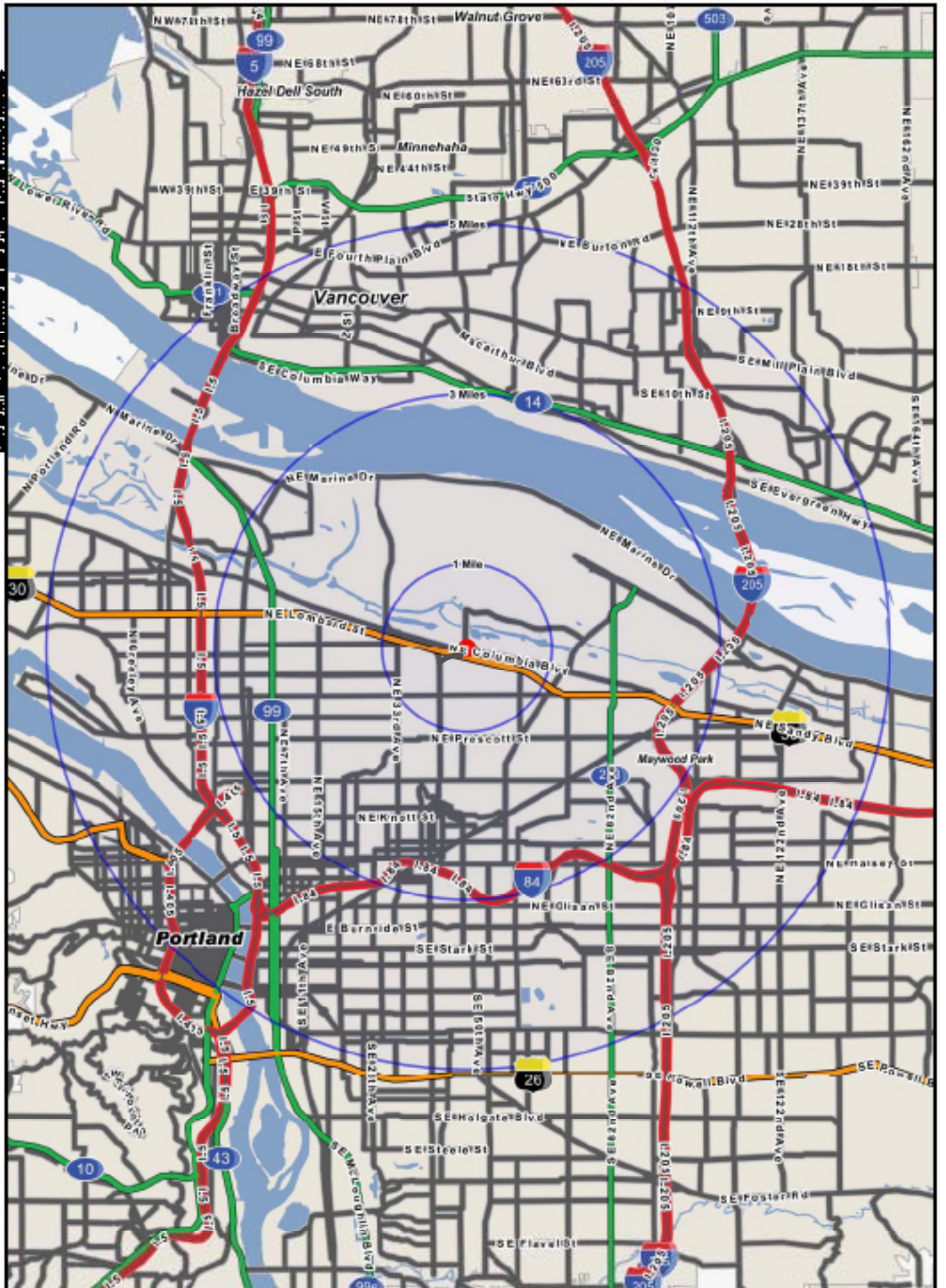
Caterpillar Rental Store

28,875 ADT (04)

Full Movement

Feenaughty Machinery Company

WW Trailers



FULL PROFILE

1990 - 2000 Census, 2010 Estimates with 2015 Projections
 Calculated using Proportional Block Groups



Lat/Lon: 45.57102/-122.6137

4705 Ne Columbia Blvd

Portland, OR

		1 Mile	3 Miles	5 Miles
POPULATION	2010 Estimated Population	9,564	110,380	332,566
	2015 Projected Population	10,166	119,192	361,797
	2000 Census Population	9,035	102,663	301,543
	1990 Census Population	8,077	98,495	280,618
	Historical Annual Growth 1990 to 2010	0.9%	0.6%	0.9%
	Projected Annual Growth 2010 to 2015	1.3%	1.6%	1.8%
HOUSEHOLDS	2010 Est. Households	3,421	42,737	139,587
	2015 Proj. Households	3,451	43,801	145,147
	2000 Census Households	3,323	40,904	128,532
	1990 Census Households	3,204	38,951	118,349
	Historical Annual Growth 1990 to 2010	0.3%	0.5%	0.9%
	Projected Annual Growth 2010 to 2015	0.2%	0.5%	0.8%
AGE	2010 Est. Population 0 to 9 Years	14.6%	13.6%	12.0%
	2010 Est. Population 10 to 19 Years	11.1%	10.8%	9.9%
	2010 Est. Population 20 to 29 Years	12.7%	12.9%	15.3%
	2010 Est. Population 30 to 44 Years	27.0%	27.4%	25.8%
	2010 Est. Population 45 to 59 Years	18.8%	20.5%	20.0%
	2010 Est. Population 60 to 74 Years	11.0%	10.5%	11.5%
	2010 Est. Population 75 Years Plus	4.8%	4.4%	5.6%
	2010 Est. Median Age	34.8	35.5	36.1
MARITAL STATUS & SEX	2010 Est. Male Population	50.6%	48.6%	49.3%
	2010 Est. Female Population	49.4%	51.4%	50.7%
	2010 Est. Never Married	30.8%	34.3%	35.5%
	2010 Est. Now Married	42.4%	40.7%	38.8%
	2010 Est. Separated or Divorced	21.4%	19.3%	19.5%
	2010 Est. Widowed	5.5%	5.8%	6.2%
INCOME	2010 Est. HH Income \$200,000 or More	1.0%	2.4%	2.3%
	2010 Est. HH Income \$150,000 to \$199,999	1.4%	3.5%	2.7%
	2010 Est. HH Income \$100,000 to \$149,999	8.1%	11.8%	10.0%
	2010 Est. HH Income \$75,000 to \$99,999	12.8%	13.0%	11.3%
	2010 Est. HH Income \$50,000 to \$74,999	23.7%	20.0%	18.6%
	2010 Est. HH Income \$35,000 to \$49,999	19.1%	14.8%	14.9%
	2010 Est. HH Income \$25,000 to \$34,999	12.3%	10.8%	12.1%
	2010 Est. HH Income \$15,000 to \$24,999	10.8%	10.7%	12.1%
	2010 Est. HH Income \$0 to \$14,999	10.9%	12.9%	15.9%
	2010 Est. Average Household Income	\$58,344	\$68,465	\$62,990
	2010 Est. Median HH Income	\$46,734	\$53,678	\$47,328
	2010 Est. Per Capita Income	\$22,066	\$27,195	\$27,711
	2010 Est. Number of Businesses	434	4,726	21,829
	2010 Est. Total Number of Employees	6,698	58,263	296,540

This report was produced using data from private and government sources deemed to be reliable. The information herein is provided without representation or warranty.

FULL PROFILE

1990 - 2000 Census, 2010 Estimates with 2015 Projections
 Calculated using Proportional Block Groups



Lat/Lon: 45.57102/-122.6137

4705 Ne Columbia Blvd

Portland, OR

	1 Mile	3 Miles	5 Miles	
RACE	2010 Est. White Population	58.1%	66.1%	74.3%
	2010 Est. Black Population	18.7%	17.9%	10.0%
	2010 Est. Asian & Pacific Islander	8.3%	6.1%	6.5%
	2010 Est. American Indian & Alaska Native	1.7%	1.1%	1.2%
	2010 Est. Other Races Population	13.3%	8.7%	8.0%
HISPANIC	2010 Est. Hispanic Population	1,972	12,910	34,408
	2010 Est. Hispanic Population Percent	20.6%	11.7%	10.3%
	2015 Proj. Hispanic Population Percent	22.8%	13.1%	11.6%
	2000 Hispanic Population Percent			
EDUCATION (Adults 25 or Older)	2010 Est. Adult Population (25 Years or Older)	6,594	77,973	239,270
	2010 Est. Elementary (0 to 8)	6.7%	4.6%	4.7%
	2010 Est. Some High School (9 to 11)	7.5%	5.9%	6.0%
	2010 Est. High School Graduate (12)	24.2%	20.4%	21.2%
	2010 Est. Some College (13 to 16)	24.5%	22.6%	23.5%
	2010 Est. Associate Degree Only	7.6%	6.6%	7.1%
	2010 Est. Bachelor Degree Only	19.2%	24.4%	23.4%
	2010 Est. Graduate Degree	10.3%	15.6%	14.0%
HOUSING	2010 Est. Total Housing Units	3,664	45,413	149,496
	2010 Est. Owner Occupied Percent	63.7%	63.8%	50.6%
	2010 Est. Renter Occupied Percent	29.6%	30.3%	42.7%
	2010 Est. Vacant Housing Percent	6.6%	5.9%	6.6%
HOMES BUILT BY YEAR	2000 Homes Built 1999 to 2000	1.0%	1.2%	1.9%
	2000 Homes Built 1995 to 1998	3.7%	2.1%	4.4%
	2000 Homes Built 1990 to 1994	2.0%	1.3%	2.6%
	2000 Homes Built 1980 to 1989	6.8%	2.5%	5.0%
	2000 Homes Built 1970 to 1979	10.2%	6.4%	10.8%
	2000 Homes Built 1960 to 1969	9.6%	6.4%	10.4%
	2000 Homes Built 1950 to 1959	19.5%	12.3%	13.7%
	2000 Homes Built Before 1949	47.2%	67.8%	51.3%
HOME VALUES	2000 Home Value \$1,000,000 or More	-	-	0.1%
	2000 Home Value \$500,000 to \$999,999	-	1.1%	0.8%
	2000 Home Value \$400,000 to \$499,999	0.4%	1.6%	1.4%
	2000 Home Value \$300,000 to \$399,999	0.4%	5.4%	4.3%
	2000 Home Value \$200,000 to \$299,999	7.5%	19.1%	16.4%
	2000 Home Value \$150,000 to \$199,999	30.2%	27.1%	28.0%
	2000 Home Value \$100,000 to \$149,999	46.8%	35.2%	38.2%
	2000 Home Value \$50,000 to \$99,999	14.0%	9.5%	9.9%
	2000 Home Value \$25,000 to \$49,999	0.3%	0.5%	0.5%
	2000 Home Value \$0 to \$24,999	0.4%	0.3%	0.3%
	2000 Median Home Value	\$138,558	\$171,506	\$164,709
	2000 Median Rent	\$568	\$543	\$544

This report was produced using data from private and government sources deemed to be reliable. The information herein is provided without representation or warranty.

FULL PROFILE

1990 - 2000 Census, 2010 Estimates with 2015 Projections
 Calculated using Proportional Block Groups



Lat/Lon: 45.57102/-122.6137

4705 Ne Columbia Blvd

Portland, OR

		1 Mile	3 Miles	5 Miles
LABOR FORCE	2010 Est. Labor: Population Age 16+	7,503	87,865	272,882
	2010 Est. Civilian Employed	57.4%	61.4%	60.4%
	2010 Est. Civilian Unemployed	7.7%	8.0%	8.6%
	2010 Est. in Armed Forces	0.2%	0.1%	0.1%
	2010 Est. not in Labor Force	34.7%	30.6%	30.9%
	2010 Labor Force: Males	50.6%	47.9%	49.0%
	2010 Labor Force: Females	49.4%	52.1%	51.0%
OCCUPATION	2000 Occupation: Population Age 16+	4,242	52,955	157,471
	2000 Mgmt, Business, & Financial Operations	11.0%	13.6%	12.7%
	2000 Professional & Related	16.5%	25.4%	23.6%
	2000 Service	21.4%	15.6%	15.7%
	2000 Sales and Office	24.9%	25.8%	26.9%
	2000 Farming, Fishing, and Forestry	0.2%	0.4%	0.3%
	2000 Construction, Extraction, & Maintenance	7.3%	5.8%	6.6%
	2000 Production, Transport, & Material Moving	18.7%	13.4%	14.3%
	2000 Percent White Collar Workers	52.4%	64.8%	63.1%
	2000 Percent Blue Collar Workers	47.6%	35.2%	36.9%
TRANSPORTATION TO WORK	2000 Drive to Work Alone	63.2%	63.9%	63.1%
	2000 Drive to Work in Carpool	16.9%	13.1%	12.2%
	2000 Travel to Work by Public Transportation	11.8%	12.2%	12.8%
	2000 Drive to Work on Motorcycle	0.3%	0.3%	0.2%
	2000 Walk or Bicycle to Work	4.2%	5.1%	6.8%
	2000 Other Means	0.3%	0.7%	0.6%
	2000 Work at Home	3.2%	4.8%	4.2%
TRAVEL TIME	2000 Travel to Work in 14 Minutes or Less	19.3%	26.3%	27.3%
	2000 Travel to Work in 15 to 29 Minutes	50.9%	47.3%	45.9%
	2000 Travel to Work in 30 to 59 Minutes	23.8%	22.2%	22.2%
	2000 Travel to Work in 60 Minutes or More	5.9%	4.2%	4.5%
	2000 Average Travel Time to Work	23.3	20.8	21.2
CONSUMER EXPENDITURE	2010 Est. Total Household Expenditure	\$166 M	\$2.30 B	\$7.08 B
	2010 Est. Apparel	\$7.92 M	\$110 M	\$339 M
	2010 Est. Contributions & Gifts	\$9.76 M	\$144 M	\$439 M
	2010 Est. Education & Reading	\$4.14 M	\$62.4 M	\$192 M
	2010 Est. Entertainment	\$9.19 M	\$128 M	\$393 M
	2010 Est. Food, Beverages & Tobacco	\$27.1 M	\$369 M	\$1.14 B
	2010 Est. Furnishings & Equipment	\$7.12 M	\$101 M	\$307 M
	2010 Est. Health Care & Insurance	\$12.1 M	\$165 M	\$513 M
	2010 Est. Household Operations & Shelter & Utilities	\$49.5 M	\$687 M	\$2.12 B
	2010 Est. Miscellaneous Expenses	\$2.83 M	\$38.7 M	\$120 M
	2010 Est. Personal Care	\$2.42 M	\$33.4 M	\$103 M
2010 Est. Transportation	\$33.8 M	\$460 M	\$1.41 B	

This report was produced using data from private and government sources deemed to be reliable. The information herein is provided without representation or warranty.