

# Main Street in Milwaukie, Oregon



Location—10879 SE Main St in Milwaukie, Oregon

Available Spaces—1,600 SF & 1,800 SF or possible to combine up to 4,600 SF

Rental Rate—\$12.00/SF/YR, NNN

Traffic Count—McLoughlin Blvd—40,600 ADT

Comments—

- Centrally located in Milwaukie's historic downtown corridor
- Close to Milwaukie high school (1,200 students), Portland Waldorf School (363 students) and Dark Horse Comics.
- Ample street parking in front of business and public parking lot at rear of building facing McLoughlin Blvd

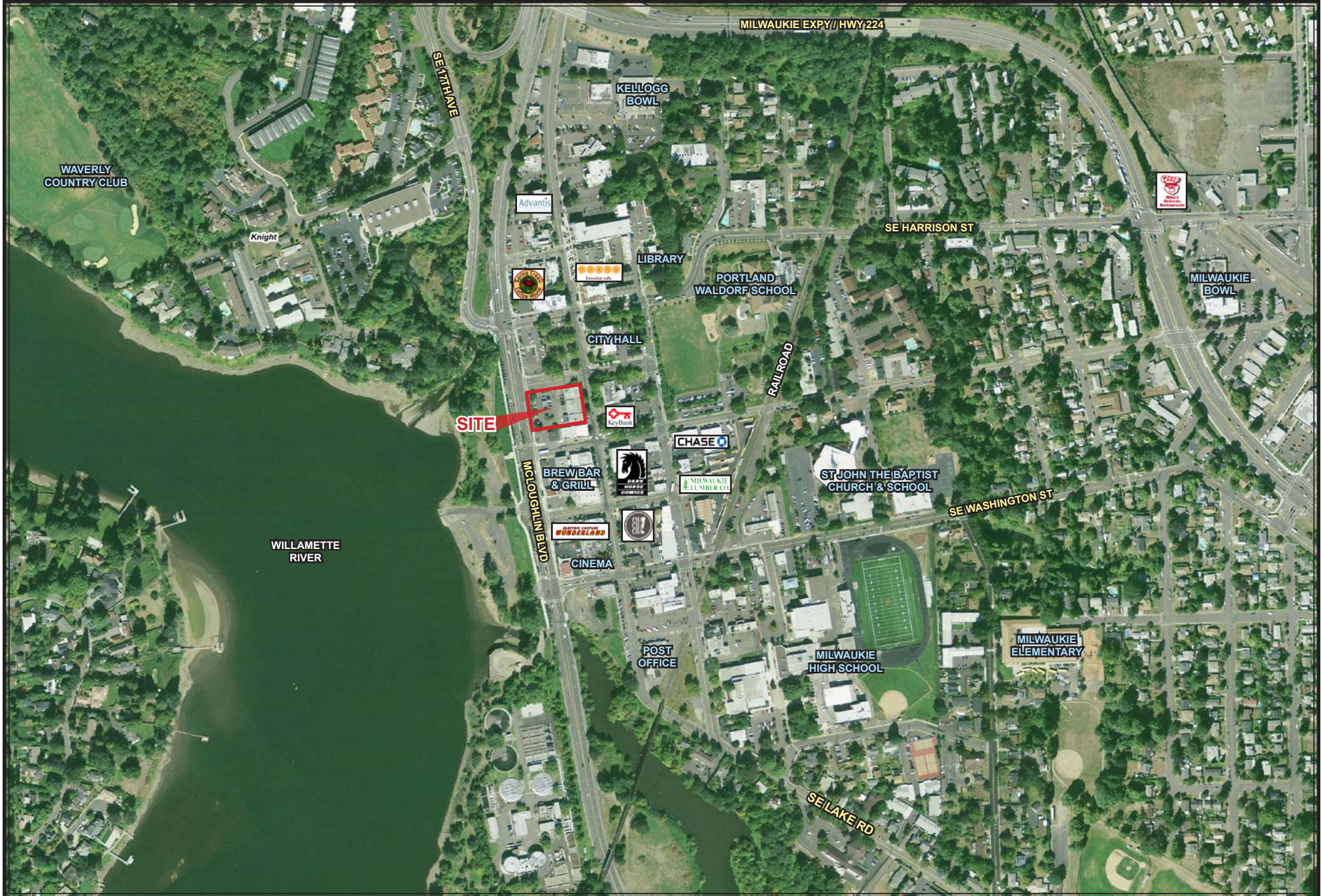


Ralph Bigelow  
ralph@cra-nw.com  
503-274-0211 x700

Commercial Realty Advisors NW, LLC  
733 SW 2nd Avenue, Suite 200  
Portland, Oregon 97204  
www.cra-nw.com

Licensed brokers in Oregon & Washington

# Downtown—Milwaukie, Oregon





# FULL PROFILE

1990 - 2000 Census, 2010 Estimates with 2015 Projections  
 Calculated using Proportional Block Groups



Lat/Lon: 45.43951/-122.6155

## Trade Area

<b>POPULATION</b>	2010 Estimated Population	143,678
	2015 Projected Population	149,152
	2000 Census Population	136,218
	1990 Census Population	128,380
	Historical Annual Growth 1990 to 2010	0.6%
	Projected Annual Growth 2010 to 2015	0.8%
<b>HOUSEHOLDS</b>	2010 Est. Households	58,038
	2015 Proj. Households	59,102
	2000 Census Households	55,970
	1990 Census Households	52,665
	Historical Annual Growth 1990 to 2010	0.5%
	Projected Annual Growth 2010 to 2015	0.4%
<b>AGE</b>	2010 Est. Population 0 to 9 Years	11.3%
	2010 Est. Population 10 to 19 Years	11.2%
	2010 Est. Population 20 to 29 Years	13.9%
	2010 Est. Population 30 to 44 Years	21.1%
	2010 Est. Population 45 to 59 Years	21.3%
	2010 Est. Population 60 to 74 Years	14.5%
	2010 Est. Population 75 Years Plus	6.7%
	2010 Est. Median Age	38.9
<b>MARITAL STATUS &amp; SEX</b>	2010 Est. Male Population	49.1%
	2010 Est. Female Population	50.9%
	2010 Est. Never Married	27.7%
	2010 Est. Now Married	48.7%
	2010 Est. Separated or Divorced	16.8%
	2010 Est. Widowed	6.8%
<b>INCOME</b>	2010 Est. HH Income \$200,000 or More	1.8%
	2010 Est. HH Income \$150,000 to \$199,999	2.5%
	2010 Est. HH Income \$100,000 to \$149,999	9.4%
	2010 Est. HH Income \$75,000 to \$99,999	12.3%
	2010 Est. HH Income \$50,000 to \$74,999	21.8%
	2010 Est. HH Income \$35,000 to \$49,999	15.6%
	2010 Est. HH Income \$25,000 to \$34,999	11.6%
	2010 Est. HH Income \$15,000 to \$24,999	11.7%
	2010 Est. HH Income \$0 to \$14,999	13.3%
	2010 Est. Average Household Income	\$59,745
	2010 Est. Median HH Income	\$49,013
	2010 Est. Per Capita Income	\$24,957
	2010 Est. Number of Businesses	4,693
	2010 Est. Total Number of Employees	52,935

This report was produced using data from private and government sources deemed to be reliable. The information herein is provided without representation or warranty.

# FULL PROFILE

1990 - 2000 Census, 2010 Estimates with 2015 Projections  
 Calculated using Proportional Block Groups



Lat/Lon: 45.43951/-122.6155

Object 1

<b>RACE</b>	2010 Est. White Population	89.6%
	2010 Est. Black Population	1.7%
	2010 Est. Asian & Pacific Islander	4.9%
	2010 Est. American Indian & Alaska Native	1.1%
	2010 Est. Other Races Population	2.7%
<b>HISPANIC</b>	2010 Est. Hispanic Population	12,670
	2010 Est. Hispanic Population Percent	8.8%
	2015 Proj. Hispanic Population Percent	10.3%
	2000 Hispanic Population Percent	
<b>EDUCATION (Adults 25 or Older)</b>	2010 Est. Adult Population (25 Years or Older)	101,857
	2010 Est. Elementary (0 to 8)	3.7%
	2010 Est. Some High School (9 to 11)	6.8%
	2010 Est. High School Graduate (12)	27.9%
	2010 Est. Some College (13 to 16)	26.7%
	2010 Est. Associate Degree Only	7.7%
	2010 Est. Bachelor Degree Only	17.5%
	2010 Est. Graduate Degree	9.7%
<b>HOUSING</b>	2010 Est. Total Housing Units	61,540
	2010 Est. Owner Occupied Percent	58.3%
	2010 Est. Renter Occupied Percent	36.0%
	2010 Est. Vacant Housing Percent	5.7%
<b>HOMES BUILT BY YEAR</b>	2000 Homes Built 1999 to 2000	0.8%
	2000 Homes Built 1995 to 1998	4.3%
	2000 Homes Built 1990 to 1994	4.9%
	2000 Homes Built 1980 to 1989	7.7%
	2000 Homes Built 1970 to 1979	19.8%
	2000 Homes Built 1960 to 1969	16.6%
	2000 Homes Built 1950 to 1959	14.5%
	2000 Homes Built Before 1949	31.3%
<b>HOME VALUES</b>	2000 Home Value \$1,000,000 or More	0.1%
	2000 Home Value \$500,000 to \$999,999	0.8%
	2000 Home Value \$400,000 to \$499,999	1.1%
	2000 Home Value \$300,000 to \$399,999	3.0%
	2000 Home Value \$200,000 to \$299,999	14.4%
	2000 Home Value \$150,000 to \$199,999	35.5%
	2000 Home Value \$100,000 to \$149,999	36.8%
	2000 Home Value \$50,000 to \$99,999	7.7%
	2000 Home Value \$25,000 to \$49,999	0.3%
	2000 Home Value \$0 to \$24,999	0.3%
	2000 Median Home Value	\$162,925
	2000 Median Rent	\$582

This report was produced using data from private and government sources deemed to be reliable. The information herein is provided without representation or warranty.

# FULL PROFILE

1990 - 2000 Census, 2010 Estimates with 2015 Projections  
 Calculated using Proportional Block Groups



Lat/Lon: 45.43951/-122.6155

## Object 1

LABOR FORCE	2010 Est. Labor: Population Age 16+	118,063
	2010 Est. Civilian Employed	59.4%
	2010 Est. Civilian Unemployed	8.5%
	2010 Est. in Armed Forces	0.1%
	2010 Est. not in Labor Force	32.0%
	2010 Labor Force: Males	48.6%
	2010 Labor Force: Females	51.4%
OCCUPATION	2000 Occupation: Population Age 16+	69,698
	2000 Mgmt, Business, & Financial Operations	12.3%
	2000 Professional & Related	17.9%
	2000 Service	14.7%
	2000 Sales and Office	28.8%
	2000 Farming, Fishing, and Forestry	0.2%
	2000 Construction, Extraction, & Maintenance	9.9%
	2000 Production, Transport, & Material Moving	16.1%
	2000 Percent White Collar Workers	59.0%
	2000 Percent Blue Collar Workers	41.0%
TRANSPORTATION TO WORK	2000 Drive to Work Alone	71.4%
	2000 Drive to Work in Carpool	11.7%
	2000 Travel to Work by Public Transportation	9.0%
	2000 Drive to Work on Motorcycle	0.1%
	2000 Walk or Bicycle to Work	3.5%
	2000 Other Means	0.4%
	2000 Work at Home	4.0%
TRAVEL TIME	2000 Travel to Work in 14 Minutes or Less	24.1%
	2000 Travel to Work in 15 to 29 Minutes	42.2%
	2000 Travel to Work in 30 to 59 Minutes	28.9%
	2000 Travel to Work in 60 Minutes or More	4.7%
	2000 Average Travel Time to Work	22.9
CONSUMER EXPENDITURE	2010 Est. Total Household Expenditure	\$2.85 B
	2010 Est. Apparel	\$136 M
	2010 Est. Contributions & Gifts	\$174 M
	2010 Est. Education & Reading	\$74.6 M
	2010 Est. Entertainment	\$159 M
	2010 Est. Food, Beverages & Tobacco	\$462 M
	2010 Est. Furnishings & Equipment	\$124 M
	2010 Est. Health Care & Insurance	\$207 M
	2010 Est. Household Operations & Shelter & Utilities	\$852 M
	2010 Est. Miscellaneous Expenses	\$48.5 M
	2010 Est. Personal Care	\$41.6 M
2010 Est. Transportation	\$575 M	

This report was produced using data from private and government sources deemed to be reliable. The information herein is provided without representation or warranty.