

AVAILABLE

McMinnville Drive-Thru QSR

McMinnville, Oregon



Location: 913 NE Highway 99W in McMinnville, Oregon

Available Space: 3,503 SF

Rate: Call for details; up to \$200,000 TI contribution available for strong credit tenant

Comments:

- Endcap drive-thru site available with existing restaurant improvements
- High traffic location fronting Pacific Hwy/99W
- Great visibility and easy access

Traffic Count: Hwy 99W – 24,600 ADT (09)

Demographics:

	1 Mile	3 Mile	5 Mile
Est. Population 2010	7,758	30,399	40,050
Projected Population 2015	7,943	32,166	43,036
2010 Average HH Income	\$55,357	\$57,502	\$62,440
Employees	6,083	14,729	17,078

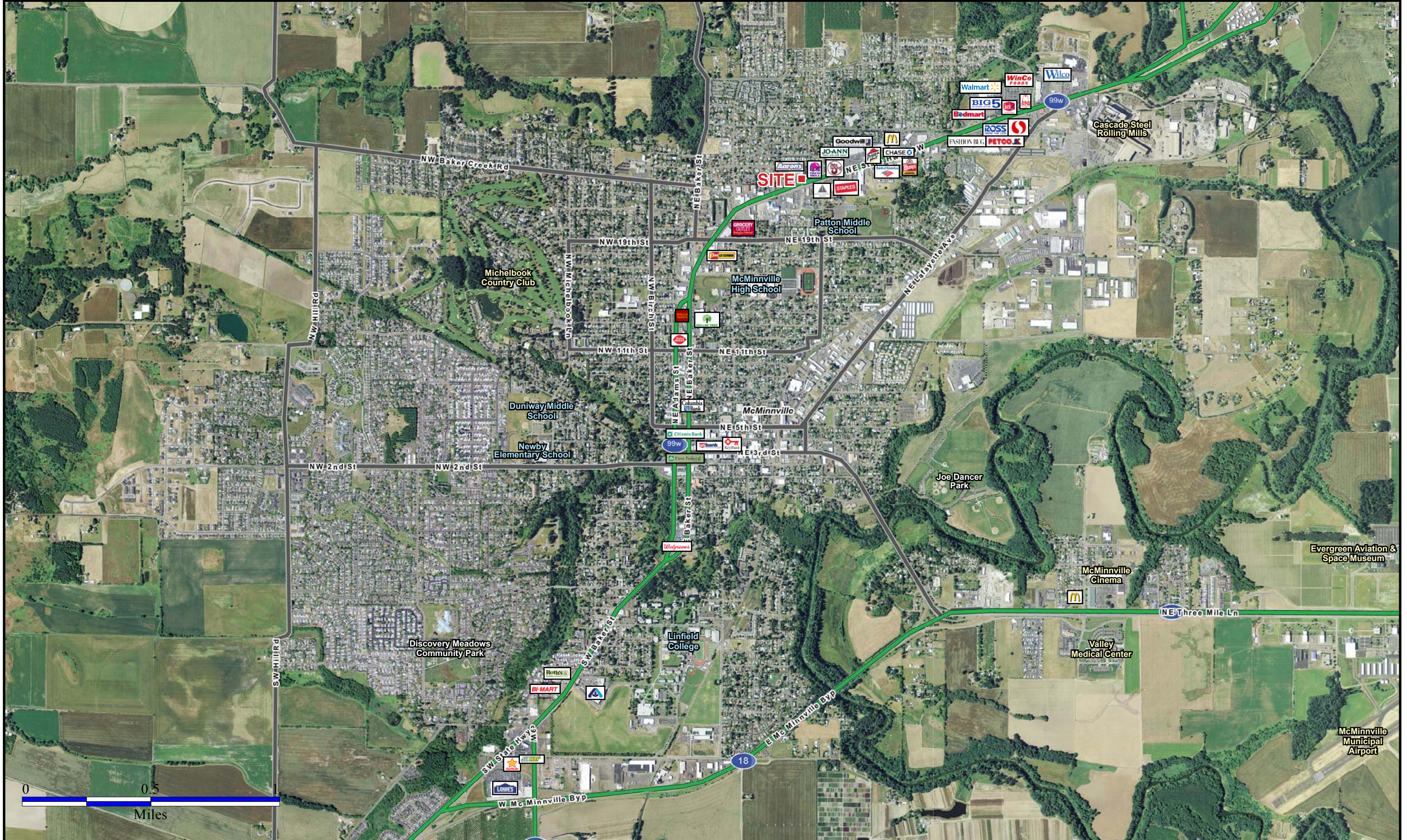
Source: Regis - SitesUSA

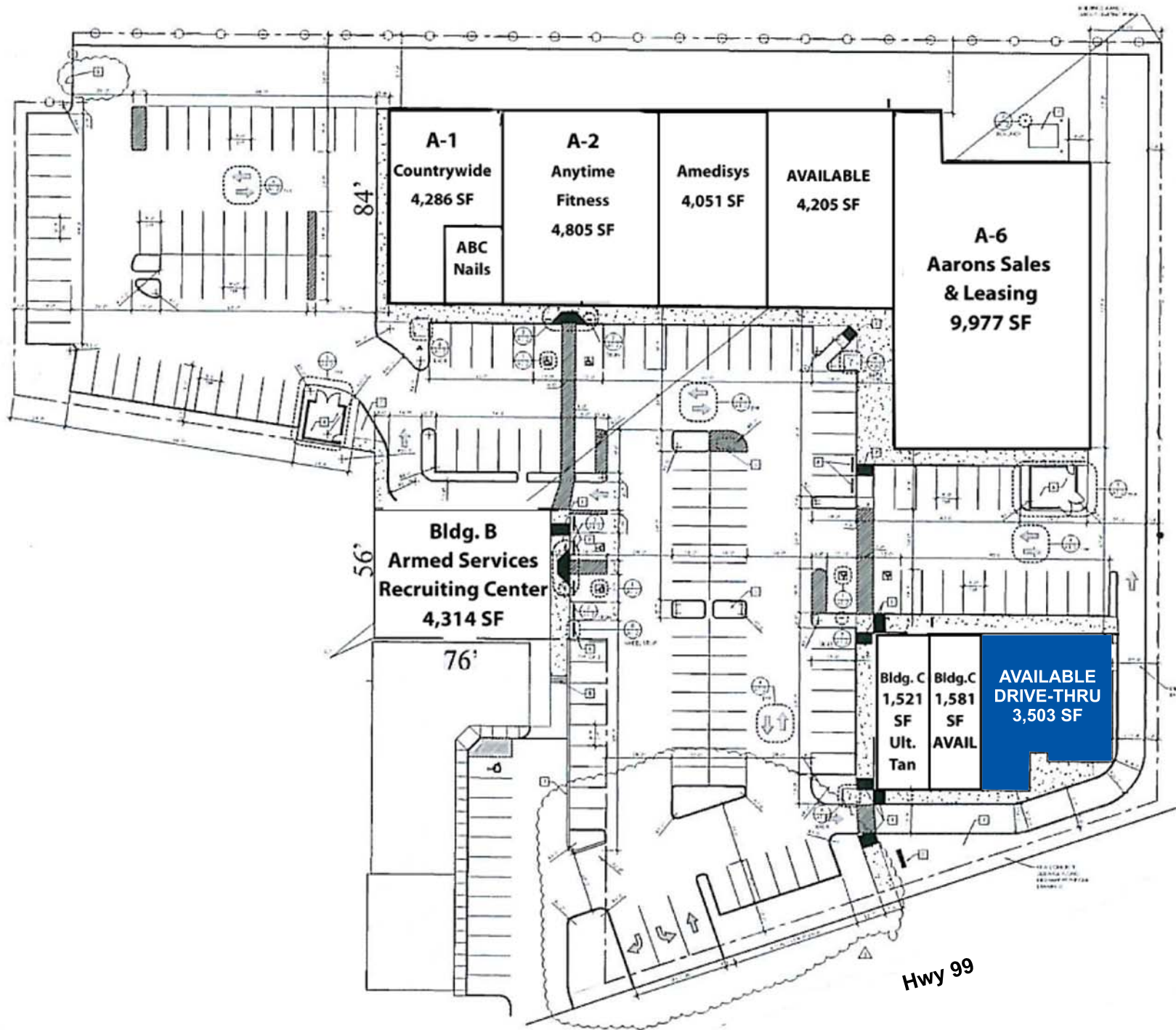


Jeff Olson
(503) 274-0211, Ext. 160
jeff@cra-nw.com

Commercial Realty Advisors NW, LLC
733 S.W. 2nd Avenue, Suite 200
Portland, Oregon 97204
www.cra-nw.com

MCMINNVILLE, OREGON





FULL PROFILE

1990 - 2000 Census, 2010 Estimates with 2015 Projections
 Calculated using Proportional Block Groups



Lat/Lon: 45.22498/-123.1896

913 Ne Highway 99w

Mcminnville, OR

		1 Mile	3 Miles	5 Miles
POPULATION	2010 Estimated Population	7,758	30,399	40,050
	2015 Projected Population	7,943	32,166	43,036
	2000 Census Population	7,051	26,078	33,472
	1990 Census Population	5,481	18,603	23,619
	Historical Annual Growth 1990 to 2010	2.1%	3.2%	3.5%
	Projected Annual Growth 2010 to 2015	0.5%	1.2%	1.5%
HOUSEHOLDS	2010 Est. Households	3,049	11,093	14,406
	2015 Proj. Households	3,099	11,693	15,411
	2000 Census Households	2,712	9,242	11,719
	1990 Census Households	2,154	6,852	8,569
	Historical Annual Growth 1990 to 2010	2.1%	3.1%	3.4%
	Projected Annual Growth 2010 to 2015	0.3%	1.1%	1.4%
AGE	2010 Est. Population 0 to 9 Years	14.7%	14.1%	14.4%
	2010 Est. Population 10 to 19 Years	12.0%	13.5%	13.7%
	2010 Est. Population 20 to 29 Years	15.5%	16.1%	14.7%
	2010 Est. Population 30 to 44 Years	18.1%	17.5%	18.1%
	2010 Est. Population 45 to 59 Years	17.2%	17.0%	17.9%
	2010 Est. Population 60 to 74 Years	12.5%	13.2%	13.2%
	2010 Est. Population 75 Years Plus	10.0%	8.6%	8.0%
	2010 Est. Median Age	35.3	35.6	35.9
MARITAL STATUS & SEX	2010 Est. Male Population	49.4%	48.7%	49.0%
	2010 Est. Female Population	50.6%	51.3%	51.0%
	2010 Est. Never Married	25.6%	26.1%	24.6%
	2010 Est. Now Married	49.3%	51.5%	53.8%
	2010 Est. Separated or Divorced	16.7%	15.6%	15.2%
	2010 Est. Widowed	8.4%	6.8%	6.4%
INCOME	2010 Est. HH Income \$200,000 or More	2.1%	2.1%	2.9%
	2010 Est. HH Income \$150,000 to \$199,999	2.4%	2.5%	2.3%
	2010 Est. HH Income \$100,000 to \$149,999	7.9%	8.4%	8.5%
	2010 Est. HH Income \$75,000 to \$99,999	9.9%	12.3%	12.5%
	2010 Est. HH Income \$50,000 to \$74,999	15.6%	18.5%	19.4%
	2010 Est. HH Income \$35,000 to \$49,999	19.0%	19.8%	19.3%
	2010 Est. HH Income \$25,000 to \$34,999	10.7%	10.0%	10.2%
	2010 Est. HH Income \$15,000 to \$24,999	10.6%	10.2%	10.1%
	2010 Est. HH Income \$0 to \$14,999	21.8%	16.2%	14.8%
	2010 Est. Average Household Income	\$55,357	\$57,502	\$62,440
	2010 Est. Median HH Income	\$39,677	\$46,088	\$48,025
	2010 Est. Per Capita Income	\$23,005	\$22,888	\$24,106
	2010 Est. Number of Businesses	635	1,254	1,506
	2010 Est. Total Number of Employees	6,083	14,729	17,078

This report was produced using data from private and government sources deemed to be reliable. The information herein is provided without representation or warranty.

FULL PROFILE

1990 - 2000 Census, 2010 Estimates with 2015 Projections
 Calculated using Proportional Block Groups



Lat/Lon: 45.22498/-123.1896

913 Ne Highway 99w

Mcminville, OR

		1 Mile	3 Miles	5 Miles
RACE	2010 Est. White Population	88.7%	89.4%	89.8%
	2010 Est. Black Population	1.0%	0.8%	0.8%
	2010 Est. Asian & Pacific Islander	1.8%	1.6%	1.5%
	2010 Est. American Indian & Alaska Native	1.2%	1.4%	1.4%
	2010 Est. Other Races Population	7.3%	6.8%	6.5%
HISPANIC	2010 Est. Hispanic Population	1,707	5,948	7,655
	2010 Est. Hispanic Population Percent	22.0%	19.6%	19.1%
	2015 Proj. Hispanic Population Percent	24.1%	21.1%	20.5%
	2000 Hispanic Population Percent			
EDUCATION (Adults 25 or Older)	2010 Est. Adult Population (25 Years or Older)	5,119	19,320	25,644
	2010 Est. Elementary (0 to 8)	11.5%	9.0%	9.1%
	2010 Est. Some High School (9 to 11)	8.8%	7.0%	7.0%
	2010 Est. High School Graduate (12)	29.8%	29.7%	30.1%
	2010 Est. Some College (13 to 16)	23.6%	24.9%	24.6%
	2010 Est. Associate Degree Only	4.5%	5.6%	5.8%
	2010 Est. Bachelor Degree Only	14.4%	15.0%	14.9%
	2010 Est. Graduate Degree	7.3%	8.7%	8.5%
HOUSING	2010 Est. Total Housing Units	3,239	11,769	15,289
	2010 Est. Owner Occupied Percent	44.2%	57.0%	60.6%
	2010 Est. Renter Occupied Percent	50.0%	37.2%	33.6%
	2010 Est. Vacant Housing Percent	5.9%	5.7%	5.8%
HOMES BUILT BY YEAR	2000 Homes Built 1999 to 2000	0.9%	1.8%	2.1%
	2000 Homes Built 1995 to 1998	10.7%	13.0%	14.5%
	2000 Homes Built 1990 to 1994	14.3%	17.3%	16.2%
	2000 Homes Built 1980 to 1989	11.9%	15.1%	14.0%
	2000 Homes Built 1970 to 1979	20.6%	19.3%	19.8%
	2000 Homes Built 1960 to 1969	11.5%	9.6%	9.2%
	2000 Homes Built 1950 to 1959	10.2%	8.3%	7.9%
	2000 Homes Built Before 1949	19.8%	15.6%	16.3%
HOME VALUES	2000 Home Value \$1,000,000 or More	-	0.2%	0.2%
	2000 Home Value \$500,000 to \$999,999	0.7%	0.5%	0.7%
	2000 Home Value \$400,000 to \$499,999	0.9%	0.8%	0.8%
	2000 Home Value \$300,000 to \$399,999	2.0%	2.0%	2.4%
	2000 Home Value \$200,000 to \$299,999	11.0%	13.9%	14.4%
	2000 Home Value \$150,000 to \$199,999	14.1%	21.5%	22.1%
	2000 Home Value \$100,000 to \$149,999	53.9%	47.4%	45.8%
	2000 Home Value \$50,000 to \$99,999	16.2%	12.4%	12.3%
	2000 Home Value \$25,000 to \$49,999	0.3%	0.9%	0.9%
	2000 Home Value \$0 to \$24,999	0.9%	0.4%	0.3%
	2000 Median Home Value	\$131,607	\$141,886	\$144,332
	2000 Median Rent	\$556	\$561	\$561

This report was produced using data from private and government sources deemed to be reliable. The information herein is provided without representation or warranty.

FULL PROFILE

1990 - 2000 Census, 2010 Estimates with 2015 Projections
 Calculated using Proportional Block Groups



Lat/Lon: 45.22498/-123.1896

913 Ne Highway 99w

Mcminnville, OR

	1 Mile	3 Miles	5 Miles	
LABOR FORCE	2010 Est. Labor: Population Age 16+	6,070	23,819	31,092
	2010 Est. Civilian Employed	51.4%	53.0%	53.9%
	2010 Est. Civilian Unemployed	8.9%	10.0%	9.6%
	2010 Est. in Armed Forces	0.1%	0.1%	0.1%
	2010 Est. not in Labor Force	39.6%	36.9%	36.4%
	2010 Labor Force: Males	48.8%	48.1%	48.4%
	2010 Labor Force: Females	51.2%	51.9%	51.6%
OCCUPATION	2000 Occupation: Population Age 16+	2,930	11,384	14,666
	2000 Mgmt, Business, & Financial Operations	10.4%	9.6%	10.0%
	2000 Professional & Related	16.6%	16.0%	15.4%
	2000 Service	18.6%	17.7%	17.3%
	2000 Sales and Office	23.0%	25.8%	25.1%
	2000 Farming, Fishing, and Forestry	3.4%	3.2%	3.3%
	2000 Construction, Extraction, & Maintenance	8.1%	8.9%	9.6%
	2000 Production, Transport, & Material Moving	20.0%	18.8%	19.3%
	2000 Percent White Collar Workers	49.9%	51.4%	50.5%
	2000 Percent Blue Collar Workers	50.1%	48.6%	49.5%
TRANSPORTATION TO WORK	2000 Drive to Work Alone	73.5%	74.7%	75.2%
	2000 Drive to Work in Carpool	14.9%	14.6%	14.8%
	2000 Travel to Work by Public Transportation	0.4%	0.3%	0.4%
	2000 Drive to Work on Motorcycle	-	-	0.1%
	2000 Walk or Bicycle to Work	7.9%	6.9%	5.8%
	2000 Other Means	0.1%	0.4%	0.4%
	2000 Work at Home	3.1%	3.2%	3.4%
	TRAVEL TIME	2000 Travel to Work in 14 Minutes or Less	58.0%	56.9%
2000 Travel to Work in 15 to 29 Minutes		17.4%	19.1%	21.3%
2000 Travel to Work in 30 to 59 Minutes		16.9%	17.3%	18.7%
2000 Travel to Work in 60 Minutes or More		7.7%	6.7%	7.9%
2000 Average Travel Time to Work		19.4	18.6	20.2
CONSUMER EXPENDITURE	2010 Est. Total Household Expenditure	\$143 M	\$531 M	\$723 M
	2010 Est. Apparel	\$6.84 M	\$25.3 M	\$34.6 M
	2010 Est. Contributions & Gifts	\$8.63 M	\$32.3 M	\$44.7 M
	2010 Est. Education & Reading	\$3.78 M	\$13.9 M	\$19.0 M
	2010 Est. Entertainment	\$7.86 M	\$29.4 M	\$40.2 M
	2010 Est. Food, Beverages & Tobacco	\$23.4 M	\$86.2 M	\$117 M
	2010 Est. Furnishings & Equipment	\$6.06 M	\$22.8 M	\$31.3 M
	2010 Est. Health Care & Insurance	\$10.5 M	\$38.7 M	\$52.5 M
	2010 Est. Household Operations & Shelter & Utilities	\$42.8 M	\$158 M	\$216 M
	2010 Est. Miscellaneous Expenses	\$2.44 M	\$9.00 M	\$12.2 M
	2010 Est. Personal Care	\$2.09 M	\$7.73 M	\$10.5 M
	2010 Est. Transportation	\$28.4 M	\$107 M	\$145 M

This report was produced using data from private and government sources deemed to be reliable. The information herein is provided without representation or warranty.