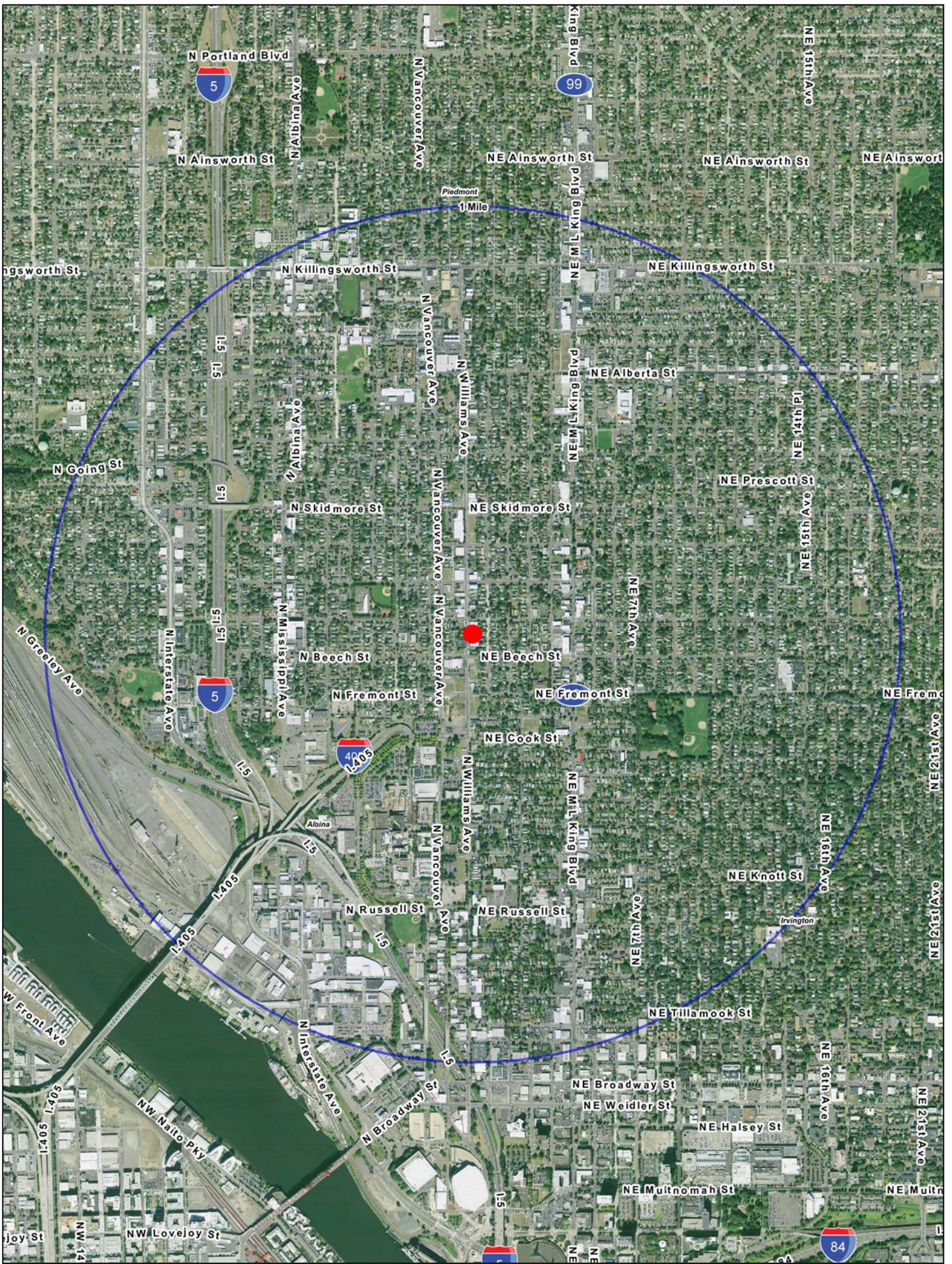
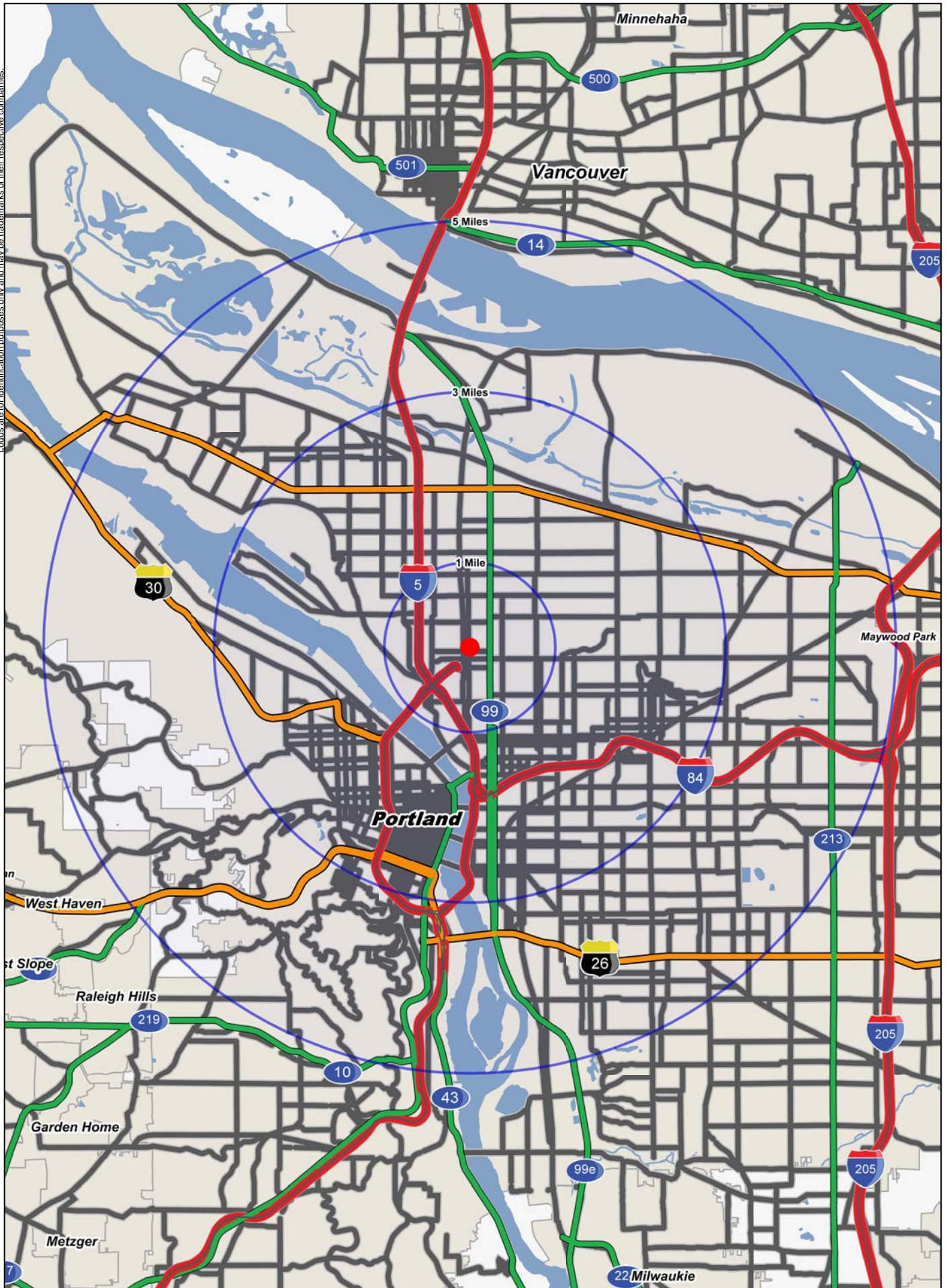


Logos are for identification purposes only and may be trademarks of their respective companies.



Locos are for identification purposes only and may be trademarks of their respective companies.



FULL PROFILE

1990 - 2000 Census, 2010 Estimates with 2015 Projections
 Calculated using Proportional Block Groups



Lat/Lon: 45.55029/-122.6664

3808 N Williams

Portland, OR

1 Mile 3 Miles 5 Miles

	1 Mile	3 Miles	5 Miles	
POPULATION	2010 Estimated Population	23,457	167,588	324,321
	2015 Projected Population	26,031	183,418	351,529
	2000 Census Population	21,914	153,140	298,285
	1990 Census Population	19,942	144,819	282,829
	Historical Annual Growth 1990 to 2010	0.9%	0.8%	0.7%
	Projected Annual Growth 2010 to 2015	2.2%	1.9%	1.7%
HOUSEHOLDS	2010 Est. Households	9,062	78,869	143,820
	2015 Proj. Households	9,649	83,987	150,811
	2000 Census Households	8,641	72,037	133,404
	1990 Census Households	7,516	65,833	124,357
	Historical Annual Growth 1990 to 2010	1.0%	1.0%	0.8%
	Projected Annual Growth 2010 to 2015	1.3%	1.3%	1.0%
AGE	2010 Est. Population 0 to 9 Years	15.1%	10.6%	11.3%
	2010 Est. Population 10 to 19 Years	12.7%	10.0%	10.5%
	2010 Est. Population 20 to 29 Years	13.4%	15.2%	14.2%
	2010 Est. Population 30 to 44 Years	25.3%	25.6%	24.8%
	2010 Est. Population 45 to 59 Years	19.8%	22.9%	22.7%
	2010 Est. Population 60 to 74 Years	10.2%	11.2%	11.7%
	2010 Est. Population 75 Years Plus	3.6%	4.6%	4.9%
	2010 Est. Median Age	33.9	37.2	37.4
MARITAL STATUS & SEX	2010 Est. Male Population	48.9%	50.5%	50.1%
	2010 Est. Female Population	51.1%	49.5%	49.9%
	2010 Est. Never Married	43.7%	42.8%	39.0%
	2010 Est. Now Married	29.5%	31.7%	36.6%
	2010 Est. Separated or Divorced	21.1%	20.1%	19.0%
	2010 Est. Widowed	5.8%	5.4%	5.5%
INCOME	2010 Est. HH Income \$200,000 or More	1.3%	2.8%	3.5%
	2010 Est. HH Income \$150,000 to \$199,999	2.3%	3.4%	3.7%
	2010 Est. HH Income \$100,000 to \$149,999	7.9%	10.1%	10.5%
	2010 Est. HH Income \$75,000 to \$99,999	9.2%	10.1%	10.8%
	2010 Est. HH Income \$50,000 to \$74,999	16.8%	15.5%	17.3%
	2010 Est. HH Income \$35,000 to \$49,999	14.9%	13.9%	14.2%
	2010 Est. HH Income \$25,000 to \$34,999	12.1%	11.4%	11.3%
	2010 Est. HH Income \$15,000 to \$24,999	13.1%	12.4%	11.8%
	2010 Est. HH Income \$0 to \$14,999	22.5%	20.3%	17.0%
	2010 Est. Average Household Income	\$52,382	\$62,135	\$68,158
	2010 Est. Median HH Income	\$40,538	\$45,400	\$50,599
	2010 Est. Per Capita Income	\$20,833	\$30,579	\$31,428
2010 Est. Number of Businesses	1,324	15,326	23,440	
2010 Est. Total Number of Employees	23,675	222,407	339,277	

This report was produced using data from private and government sources deemed to be reliable. The information herein is provided without representation or warranty.

FULL PROFILE

1990 - 2000 Census, 2010 Estimates with 2015 Projections
 Calculated using Proportional Block Groups



Lat/Lon: 45.55029/-122.6664

3808 N Williams

Portland, OR

	1 Mile	3 Miles	5 Miles	
RACE	2010 Est. White Population	51.7%	75.2%	79.2%
	2010 Est. Black Population	38.8%	15.8%	10.3%
	2010 Est. Asian & Pacific Islander	3.6%	4.8%	6.5%
	2010 Est. American Indian & Alaska Native	1.5%	1.3%	1.2%
	2010 Est. Other Races Population	4.4%	2.9%	2.9%
HISPANIC	2010 Est. Hispanic Population	3,688	16,484	33,114
	2010 Est. Hispanic Population Percent	15.7%	9.8%	10.2%
	2015 Proj. Hispanic Population Percent	18.2%	11.3%	11.8%
	2000 Hispanic Population Percent			
EDUCATION (Adults 25 or Older)	2010 Est. Adult Population (25 Years or Older)	15,544	121,769	232,541
	2010 Est. Elementary (0 to 8)	6.3%	3.9%	4.3%
	2010 Est. Some High School (9 to 11)	7.1%	5.0%	5.2%
	2010 Est. High School Graduate (12)	20.9%	17.7%	18.3%
	2010 Est. Some College (13 to 16)	22.8%	21.8%	21.7%
	2010 Est. Associate Degree Only	5.6%	6.2%	6.2%
	2010 Est. Bachelor Degree Only	24.1%	27.7%	26.7%
	2010 Est. Graduate Degree	13.2%	17.7%	17.6%
HOUSING	2010 Est. Total Housing Units	9,858	85,142	154,782
	2010 Est. Owner Occupied Percent	49.9%	42.1%	48.5%
	2010 Est. Renter Occupied Percent	42.1%	50.6%	44.4%
	2010 Est. Vacant Housing Percent	8.1%	7.4%	7.1%
HOMES BUILT BY YEAR	2000 Homes Built 1999 to 2000	1.8%	1.9%	1.7%
	2000 Homes Built 1995 to 1998	4.8%	3.9%	3.5%
	2000 Homes Built 1990 to 1994	1.4%	1.9%	2.4%
	2000 Homes Built 1980 to 1989	2.5%	3.5%	4.2%
	2000 Homes Built 1970 to 1979	5.8%	6.7%	9.0%
	2000 Homes Built 1960 to 1969	5.5%	6.9%	8.5%
	2000 Homes Built 1950 to 1959	7.3%	9.6%	12.4%
	2000 Homes Built Before 1949	71.0%	65.6%	58.4%
HOME VALUES	2000 Home Value \$1,000,000 or More	-	0.2%	0.5%
	2000 Home Value \$500,000 to \$999,999	0.6%	2.7%	3.2%
	2000 Home Value \$400,000 to \$499,999	0.9%	2.4%	3.0%
	2000 Home Value \$300,000 to \$399,999	3.5%	7.4%	6.4%
	2000 Home Value \$200,000 to \$299,999	13.8%	20.4%	18.1%
	2000 Home Value \$150,000 to \$199,999	25.6%	24.0%	25.0%
	2000 Home Value \$100,000 to \$149,999	37.4%	31.8%	33.9%
	2000 Home Value \$50,000 to \$99,999	15.8%	10.1%	9.0%
	2000 Home Value \$25,000 to \$49,999	1.8%	0.6%	0.5%
	2000 Home Value \$0 to \$24,999	0.6%	0.4%	0.4%
	2000 Median Home Value	\$151,348	\$187,961	\$190,387
	2000 Median Rent	\$473	\$530	\$546

This report was produced using data from private and government sources deemed to be reliable. The information herein is provided without representation or warranty.

FULL PROFILE

1990 - 2000 Census, 2010 Estimates with 2015 Projections
 Calculated using Proportional Block Groups



Lat/Lon: 45.55029/-122.6664

3808 N Williams

Portland, OR

		1 Mile	3 Miles	5 Miles
LABOR FORCE	2010 Est. Labor: Population Age 16+	18,014	140,145	267,687
	2010 Est. Civilian Employed	58.1%	61.8%	62.0%
	2010 Est. Civilian Unemployed	11.4%	9.4%	8.4%
	2010 Est. in Armed Forces	0.1%	-	0.1%
	2010 Est. not in Labor Force	30.4%	28.8%	29.5%
	2010 Labor Force: Males	48.4%	50.4%	49.8%
	2010 Labor Force: Females	51.6%	49.6%	50.2%
OCCUPATION	2000 Occupation: Population Age 16+	10,498	84,425	162,882
	2000 Mgmt, Business, & Financial Operations	11.3%	14.3%	14.3%
	2000 Professional & Related	23.5%	28.0%	26.8%
	2000 Service	19.9%	15.5%	14.9%
	2000 Sales and Office	24.8%	26.1%	26.2%
	2000 Farming, Fishing, and Forestry	0.5%	0.2%	0.3%
	2000 Construction, Extraction, & Maintenance	5.9%	4.7%	5.5%
	2000 Production, Transport, & Material Moving	14.2%	11.2%	12.1%
	2000 Percent White Collar Workers	59.6%	68.4%	67.3%
	2000 Percent Blue Collar Workers	40.4%	31.6%	32.7%
TRANSPORTATION TO WORK	2000 Drive to Work Alone	52.8%	55.2%	59.3%
	2000 Drive to Work in Carpool	15.7%	11.1%	11.3%
	2000 Travel to Work by Public Transportation	17.0%	16.1%	14.6%
	2000 Drive to Work on Motorcycle	0.2%	0.2%	0.2%
	2000 Walk or Bicycle to Work	8.6%	12.2%	9.6%
	2000 Other Means	0.4%	0.6%	0.6%
	2000 Work at Home	5.3%	4.6%	4.5%
TRAVEL TIME	2000 Travel to Work in 14 Minutes or Less	28.0%	30.1%	28.0%
	2000 Travel to Work in 15 to 29 Minutes	46.9%	45.3%	46.4%
	2000 Travel to Work in 30 to 59 Minutes	20.3%	20.0%	21.2%
	2000 Travel to Work in 60 Minutes or More	4.7%	4.6%	4.4%
	2000 Average Travel Time to Work	20.1	20.3	20.7
CONSUMER EXPENDITURE	2010 Est. Total Household Expenditure	\$406 M	\$3.95 B	\$7.65 B
	2010 Est. Apparel	\$19.5 M	\$189 M	\$367 M
	2010 Est. Contributions & Gifts	\$24.4 M	\$250 M	\$494 M
	2010 Est. Education & Reading	\$10.9 M	\$111 M	\$216 M
	2010 Est. Entertainment	\$22.4 M	\$219 M	\$426 M
	2010 Est. Food, Beverages & Tobacco	\$66.5 M	\$636 M	\$1.22 B
	2010 Est. Furnishings & Equipment	\$17.3 M	\$171 M	\$335 M
	2010 Est. Health Care & Insurance	\$29.7 M	\$287 M	\$551 M
	2010 Est. Household Operations & Shelter & Utilities	\$122 M	\$1.19 B	\$2.30 B
	2010 Est. Miscellaneous Expenses	\$6.92 M	\$67.3 M	\$129 M
	2010 Est. Personal Care	\$5.95 M	\$57.7 M	\$111 M
2010 Est. Transportation	\$80.6 M	\$775 M	\$1.51 B	

This report was produced using data from private and government sources deemed to be reliable. The information herein is provided without representation or warranty.